

| | | |
|---|------------------------|---|
| LOC/DME I-HZJ 110.75 Chan 44 (Y) | APP CRS 094° | Rwy Idg 7500 TDZE 680 Apt Elev 680 |
|---|------------------------|---|

ILS Z RWY 10R (CAT II & III)

CHICAGO O'HARE INTL (ORD)

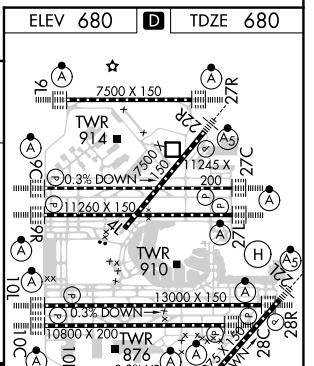
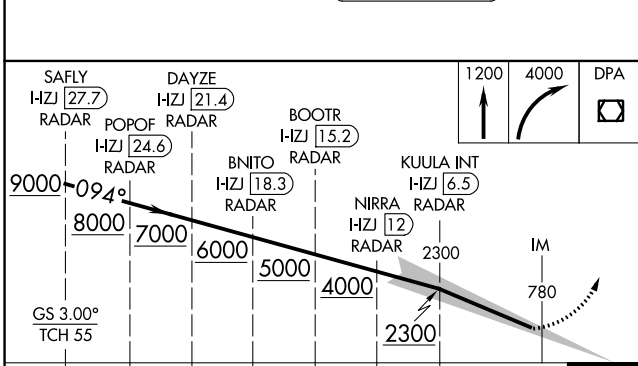
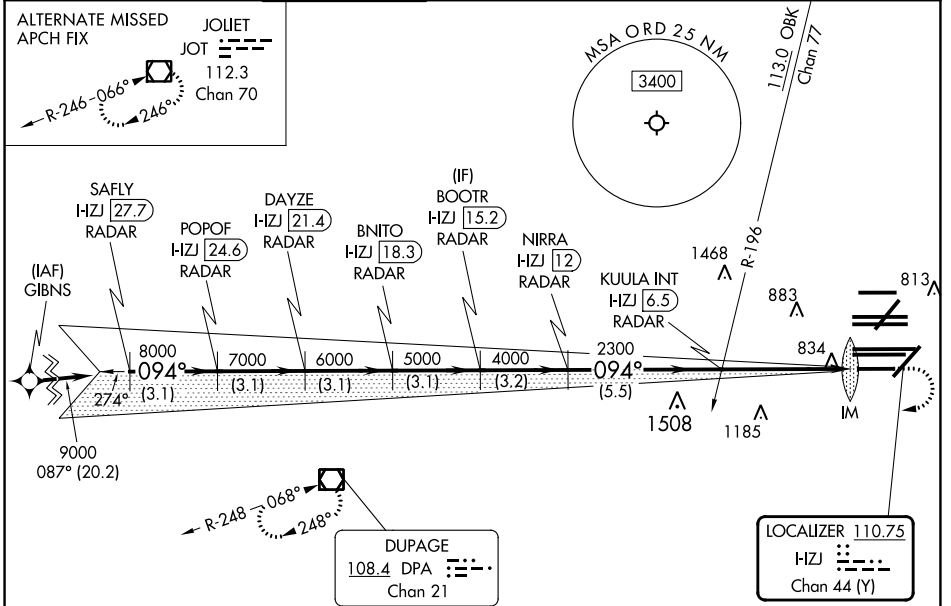
RNAV 1-GPS or RADAR required for procedure entry. DME or RADAR required.
From GIBNS: RNAV-1 GPS required.

Simultaneous approach authorized. CAT II: RVR 1000 authorized with specific OPSPEC, MSPEC, or LOA approval and use of autoland or HUD to touchdown.

ALSF-2

MISSED APPROACH: Climb to 1200 then climbing right turn to 4000 direct DPA VOR/DME and hold.

| | | | | | | |
|--|---|------------------------------------|--|---|--------------------------|-------|
| D-ATIS 135.4 282.225 | CHICAGO APP CON 119.0 292.125 | O'HARE TOWER 133.0 348.0 | GND CON (TWR CENTER) 124.125 (TWR NORTH) 118.05 (TWR SOUTH) 226.675 (ALL TWRs) | (TWR CENTER) (OBND) 121.75 (IBND) 121.9 | CLNC DEL 121.6 | CPDLC |
|--|---|------------------------------------|--|---|--------------------------|-------|



| | | | | |
|-----------|------------------|---|------------|---|
| CATEGORY | A | B | C | D |
| S-ILS 10R | CAT II RA 110/12 | | 100 DA 780 | |
| S-ILS 10R | CAT III RVR 06 | | | |

CATEGORY II & III ILS - SPECIAL AIRCREW & AIRCRAFT CERTIFICATION REQUIRED

EC-3, 08 AUG 2024 to 05 SEP 2024

EC-3, 08 AUG 2024 to 05 SEP 2024