

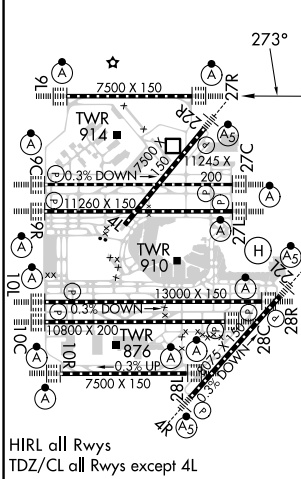
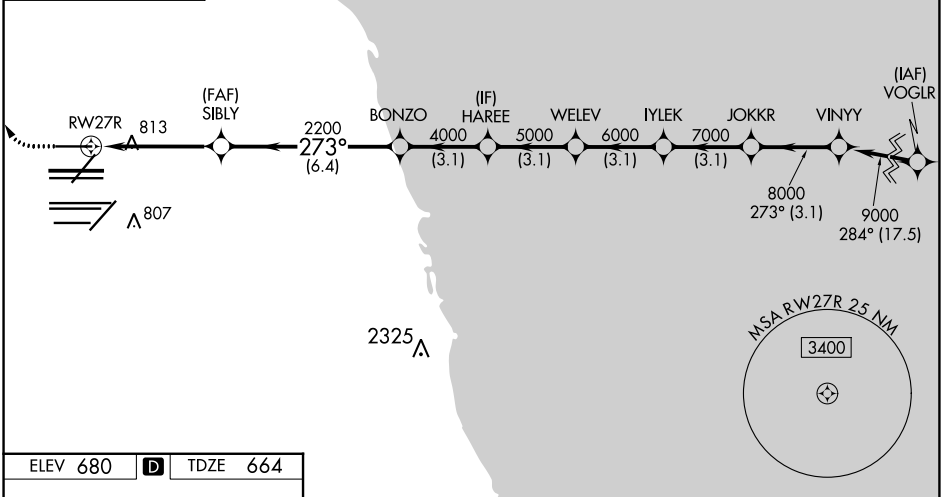
WAAS CH <b>69508</b> <b>W27B</b>	APP CRS <b>273°</b>	Rwy Idg TDZE Apt Elev	<b>7500</b> <b>664</b> <b>680</b>
----------------------------------------	------------------------	-----------------------------	-----------------------------------------

# RNAV (GPS) RWY 27R

CHICAGO O'HARE INTL (ORD)

RNP APCH. RADAR required for procedure entry.	ALSF-2 	MISSED APPROACH: Climb to 1100 then climbing right turn to 4000 direct OBK VOR/DME and hold, continue climb-in-hold to 4000.
<p>Simultaneous approach authorized. LNAV procedure NA during simultaneous operations. Use of FD or AP providing RNAV track guidance required during simultaneous operations. For uncompensated Baro-VNAV systems, procedure NA below -1°C or above 54°C.</p>		

D-ATIS <b>135.4</b> <b>282.225</b>	CHICAGO APP CON <b>119.0 292.125</b>	O'HARE TOWER <b>128.15 348.0</b>	GND CON (TWR NORTH) <b>124.125</b> (TWR SOUTH) <b>118.05</b> <b>226.675</b> (ALL TWRs)	(TWR CENTER) (OBND) <b>121.75</b> (IBND) <b>121.9</b>	CLNC DEL <b>121.6</b>	CPDLC
------------------------------------------	-----------------------------------------	-------------------------------------	-------------------------------------------------------------------------------------------------	-------------------------------------------------------------	--------------------------	-------



ELEV 680	<b>D</b>	TDZE 664				
1100	4000	OBK				
* LNAV only.						
* 1.3 NM to RWY27R						
2200	4000	5000	6000	7000	8000	9000
1.3	3.4	6.4 NM	3.1 NM	3.1 NM	3.1 NM	3.1 NM
CATEGORY	A	B	C	D		
LPV DA	864/18		200 (200-½)			
LNAV/VNAV DA	961/24		297 (300-½)			
LNAV MDA	1120/24 456 (500-½)		1120/45 456 (500-¾)			

EC-3, 08 AUG 2024 to 05 SEP 2024

EC-3, 08 AUG 2024 to 05 SEP 2024