

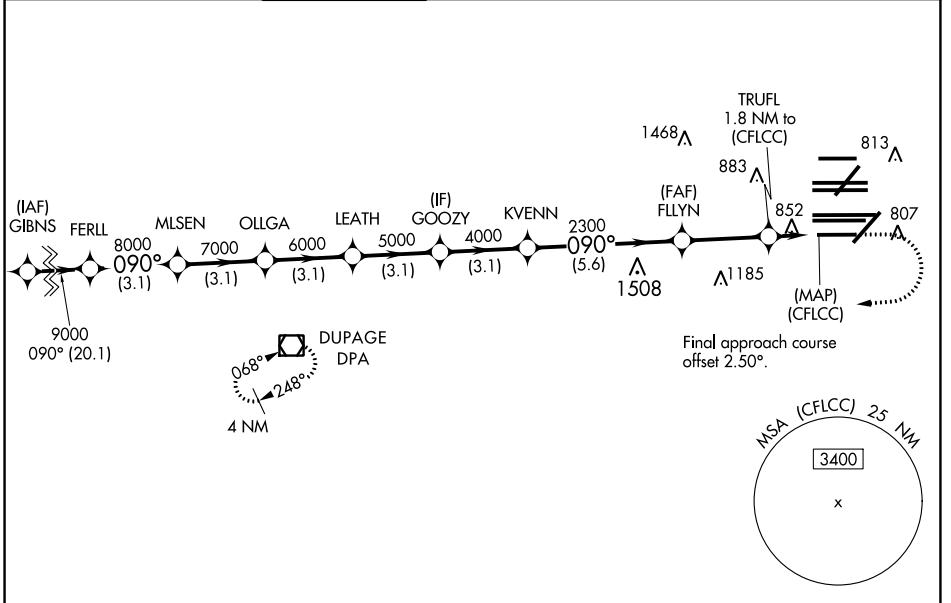
WAAS CH <b>77937</b> <b>W10D</b>	APP CRS <b>090°</b>	Rwy Idg TDZE Apt Elev	<b>7500</b> <b>680</b> <b>680</b>
--	------------------------	-----------------------------	---

# RNAV (GPS) Y RWY 10R

CHICAGO O'HARE INTL (ORD)

RNP APCH.	<p>Simultaneous approach authorized. For uncompensated Baro-VNAV systems, LNAV/VNAV NA below -19°C or above 54°C. LNAV procedure NA during simultaneous operations. Use of FD or AP providing RNAV track guidance required during simultaneous operations. For inop ALS, increase LNAV/VNAV all Cats visibility to 1½ SM.</p>	ALSF-2 	MISSED APPROACH: Climb to 1200 then climbing right turn to 4000 direct DPA VOR/DME and hold.
-----------	---	------------	--

D-ATIS <b>135.4</b> <b>282.225</b>	CHICAGO APP CON <b>119.0 292.125</b>	O'HARE TOWER <b>133.0 348.0</b>	GND CON (TWR NORTH) <b>124.125</b> (TWR SOUTH) <b>118.05</b> <b>226.675</b> (ALL TWRs)	(TWR CENTER) <b>121.75</b> (OBND) <b>121.9</b> (IBND)	CLNC DEL <b>121.6</b>	CPDLC
--	--	------------------------------------	---	---	--------------------------	-------



EC-3, 08 AUG 2024 to 05 SEP 2024

EC-3, 08 AUG 2024 to 05 SEP 2024

	1200	4000	DPA	ELEV 680	TDZE 680					
	*LNAV only.									
	9000	8000	7000	6000	5000	4000	2300	1300	1200	4000
	GP 3.00									
CATEGORY	A	B	C	D						
LPV DA		930/24	250 (300-½)							
LNAV/VNAV DA		1157/50	477 (500-1)							
LNAV MDA	1120/24	440 (500-½)	1120/40	440 (500-¾)						

