

WAAS CH 72603 W05A	APP CRS 047°	Rwy Idg TDZE Apt Elev	8000 956 956
--	------------------------	-----------------------------	---

RNAV (GPS) RWY 5

DONALDSON FLD (GYH)

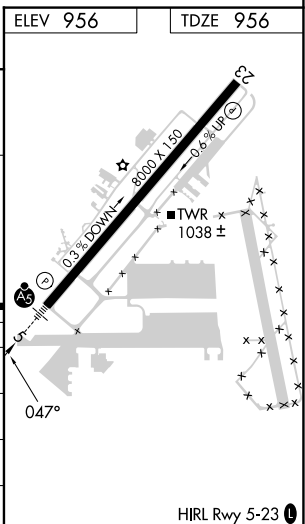
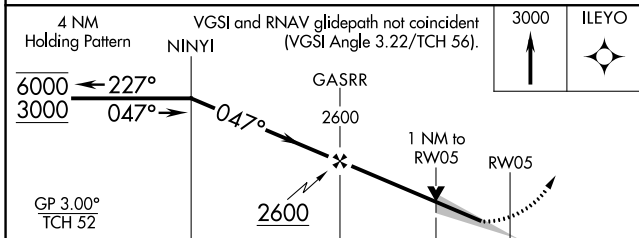
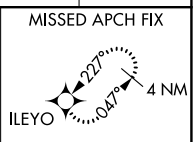
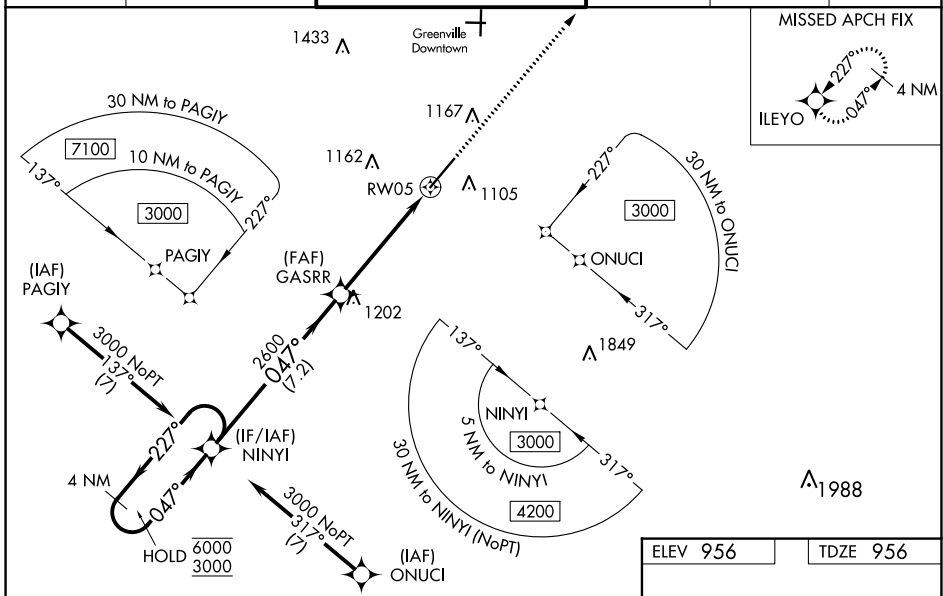
RNP APCH - GPS.

⚠ Baro-VNAV and VDP NA when using Greer altimeter setting. For uncompensated Baro-VNAV systems, LNAV/VNAV NA below -16°C or above 54°C. When local altimeter setting not received, use Greer altimeter setting and increase LPV DA to 1185 feet; increase LNAV/VNAV DA to 1279; increase all MDAs 40 feet and LNAV visibility Cats C and D ½ SM. For inop ALS, increase LNAV/VNAV visibility all Cats to ¾ SM and increase LNAV visibility Cats C/D to 1 ½ SM.



MISSED APPROACH:
Climb to 3000 direct ILEYO and hold.

AWOS-3 127.325	GREER APP CON ★ 118.8 270.275	DONALDSON TOWER ★ 133.325 (CTAF) 0 269.25	GND CON 121.4	CLNC DEL 121.4	UNICOM 122.7
--------------------------	---	--	-------------------------	--------------------------	------------------------



CATEGORY	A	B	C	D
LPV DA		1156-½	200 (200-½)	
LNAV/VNAV DA		1250-½	294 (300-½)	
LNAV MDA	1360-½	404 (500-½)	1360-¾	404 (500-¾)
CIRCLING	1420-1 464 (500-1)	1480-1 524 (600-1)	1480-1½ 524 (600-1½)	1520-2 564 (600-2)

SE-2, 08 AUG 2024 to 05 SEP 2024

SE-2, 08 AUG 2024 to 05 SEP 2024