

# COASTAL NINE DEPARTURE

**TOP ALTITUDE:  
3000**

ATIS 126.45  
GND CON  
121.6  
BRAINARD TOWER ★  
119.6 (CTAF) 248.2  
BRADLEY DEP CON  
127.8 269.325

**TAKEOFF MINIMUMS:**

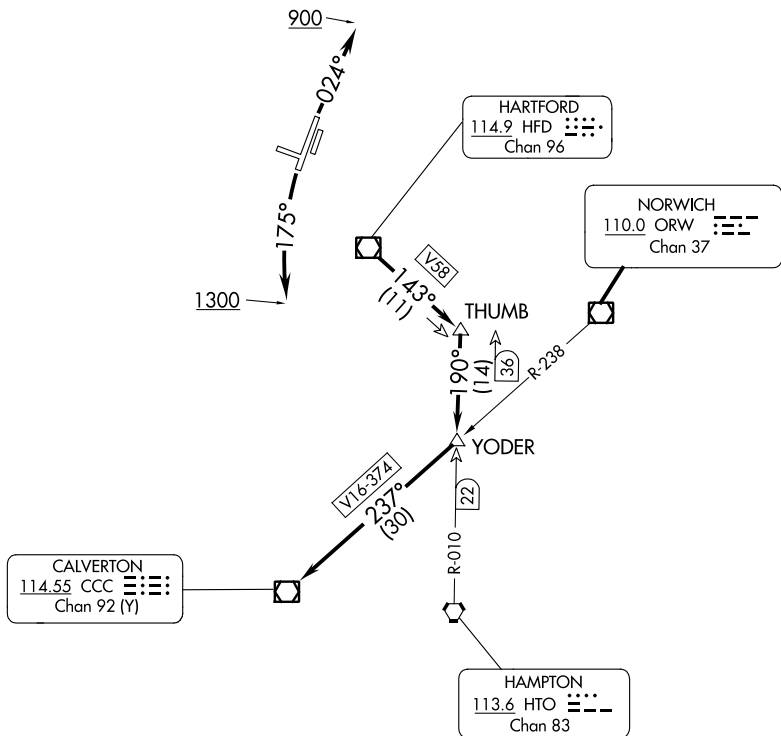
Rwys 11, 29: NA-Environmental.

Rwy 2: Standard.

Rwy 20: 200-1 $\frac{3}{8}$  or standard with minimum climb of 220' per NM to 300, or alternatively, with standard takeoff minimums and a normal 200' per NM climb gradient, takeoff must occur no later than 1500' prior to DER.

NE-1, 08 AUG 2024 to 05 SEP 2024

NE-1, 08 AUG 2024 to 05 SEP 2024



NOTE: RADAR required.

NOTE: Initial departure headings are predicated on avoiding noise sensitive areas, flight crew awareness and compliance is important in minimizing noise impacts on surrounding communities.

(NARRATIVE ON FOLLOWING PAGE)

NOTE: Chart not to scale.

# COASTAL NINE DEPARTURE