

LOC I-HFD 109.7	APP CRS 002°	Rwy Idg TDZE Apt Elev	4006 17 18
---------------------------	------------------------	-----------------------------	---------------------------------------

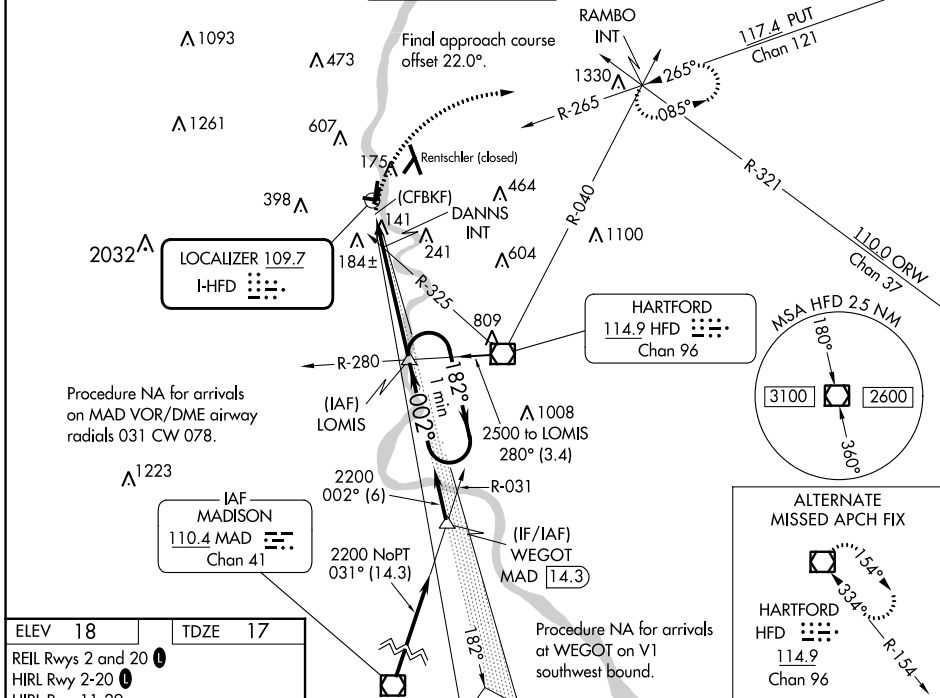
LDA RWY 2

HARTFORD-BRAINARD (HFD)

▼ Helicopter visibility reduction below 1 SM NA. Night landing: Rwy 11, 20, 29 NA. Night landing: Rwy 2 operational VGSI required, remain on or above VGSI glidepath until threshold.

▲ MISSED APPROACH: Climbing right turn to 2500 on heading 090° and PUT VOR/DME R-265 to RAMBO INT and hold.

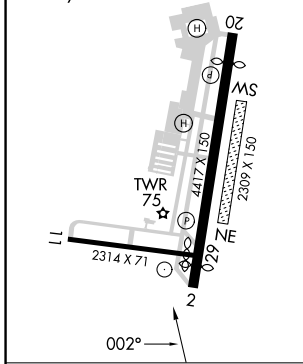
ATIS 126.45	BRADLEY APP CON 127.8 269.325	BRAINARD TOWER * 119.6 (CTAF) 0 248.2	GND CON 121.6	CLNC DEL 121.6	UNICOM 122.95
-----------------------	---	--	-------------------------	--------------------------	-------------------------



NE-1, 08 AUG 2024 to 05 SEP 2024

NE-1, 08 AUG 2024 to 05 SEP 2024

ELEV 18	TDZE 17
REIL Rws 2 and 20	
HIRL Rwy 2-20	
HIRL Rwy 11-29	



2500	PUT R-265	RAMBO INT	VGSI and descent angles not coincident (VGSI Angle 4.00/TCH 42). LOMIS	One Minute Holding Pattern
------	-----------	-----------	--	----------------------------

CATEGORY	A	B	C	D
S-2	680-1	663 (700-1)	680-1 $\frac{3}{8}$	663 (700-1 $\frac{3}{8}$)
CIRCLING	680-1 662 (700-1)	900-1 $\frac{1}{4}$ 882 (900-1 $\frac{1}{4}$)	920-2 $\frac{3}{4}$ 902 (1000-2 $\frac{3}{4}$)	920-3 902 (1000-3)

DANNIS FIX MINIMUMS (DUAL VOR RECEIVERS REQUIRED)

S-2	460-1	443 (500-1)	460-1 $\frac{3}{8}$	443 (500-1 $\frac{3}{8}$)
CIRCLING	580-1 562 (600-1)	900-1 $\frac{1}{4}$ 882 (900-1 $\frac{1}{4}$)	920-2 $\frac{3}{4}$ 902 (1000-2 $\frac{3}{4}$)	920-3 902 (1000-3)