

APP CRS 091°	Rwy Idg TDZE Apt Elev	9000 3864 3877
------------------------	-----------------------------	---

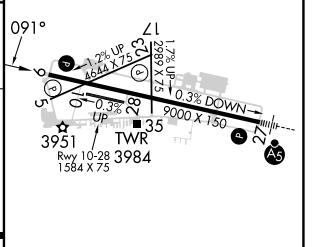
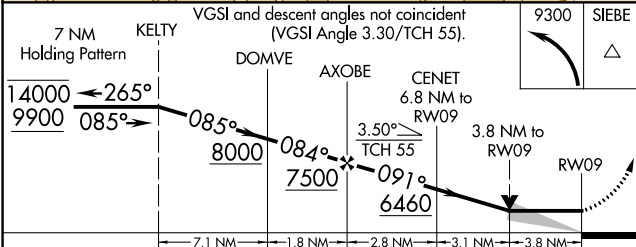
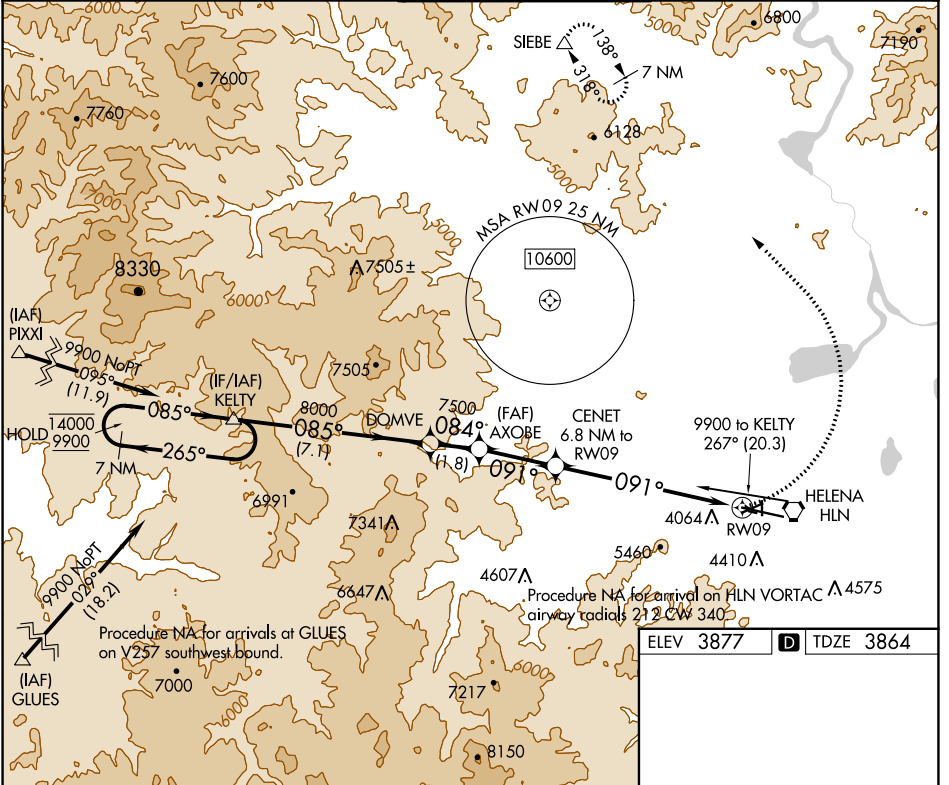
RNAV (GPS) Y RWY 9

HELENA RGNL (HLN)

RNP APCH - GPS.
 Circling NA to Rwy 10 and 28. Circling NA for Cat D south of Rwy 9-27. Circling Rwy 5, 23, 35, NA at night.
 -17°C

MISSED APPROACH: Climbing left turn to 9300 direct SIEBE and hold, continue climb-in-hold to 9300.

ATIS 120.4	HELENA APP CON ★ 119.5 229.4	HELENA TOWER ★ 118.3 (CTAF) 257.8	GND CON 121.9	UNICOM 122.95
----------------------	--	---	-------------------------	-------------------------



CATEGORY	A	B	C	D
LNVA MDA	5220-1¼ 1356 (1400-1¼)	5220-1½ 1356 (1400-1½)	5220-3	1356 (1400-3)
CIRCLING	5220-1¼ 1343 (1400-1¼)	5220-1½ 1343 (1400-1½)	6000-3	2123 (2200-3)

REIL Rwy 9, 17, and 35
 MIRL Rwy 5-23 and 17-35
 HIRL Rwy 9-27

NW-1, 08 AUG 2024 to 05 SEP 2024

NW-1, 08 AUG 2024 to 05 SEP 2024