

# EEVAA ONE DEPARTURE (RNAV)

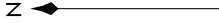
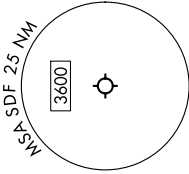
LOUISVILLE, KENTUCKY

SE-1, 08 AUG 2024 to 05 SEP 2024

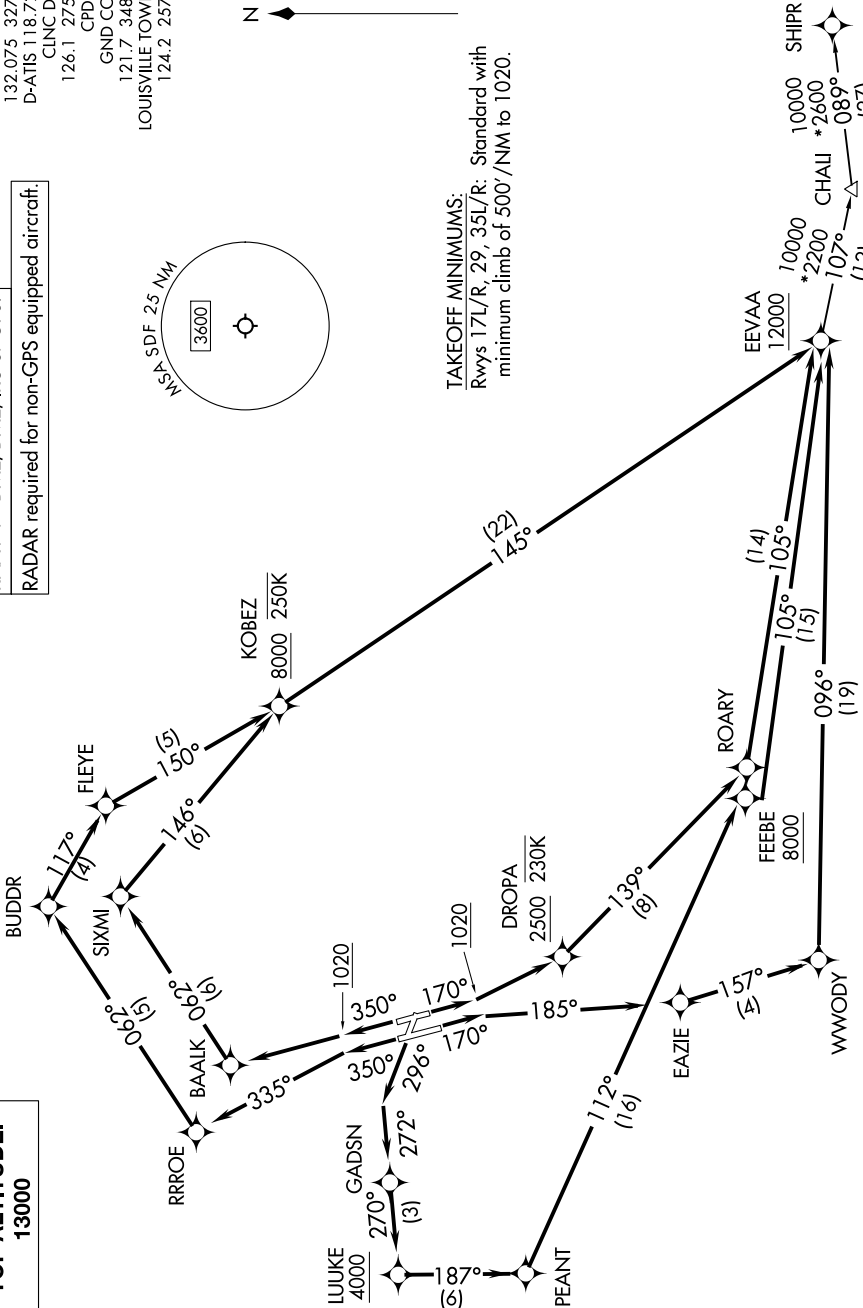
**TOP ALTITUDE:**  
13000

RNAV 1 - DME/DME/RU or GPS.  
RADAR required for non-GPS equipped aircraft.

LOUISVILLE DEP CON  
132.075 327.0  
D-ATIS 118.725  
CLNC DEL  
126.1 275.8  
CPDIC  
GND CON  
121.7 348.6  
LOUISVILLE TOWER  
124.2 257.8



**TAKEOFF MINIMUMS:**  
Rwys 17L/R, 29, 35L/R: Standard with  
minimum climb of 500'/NM to 1020.



NOTE: Chart not to scale.

(CONTINUED ON FOLLOWING PAGE)

SE-1, 08 AUG 2024 to 05 SEP 2024

# EEVAA ONE DEPARTURE (RNAV)

(EEVAA1.EEVAA) 11 JUL 24

LOUISVILLE, KENTUCKY

LOUISVILLE MUHAMMAD ALI INTL (SDF)