

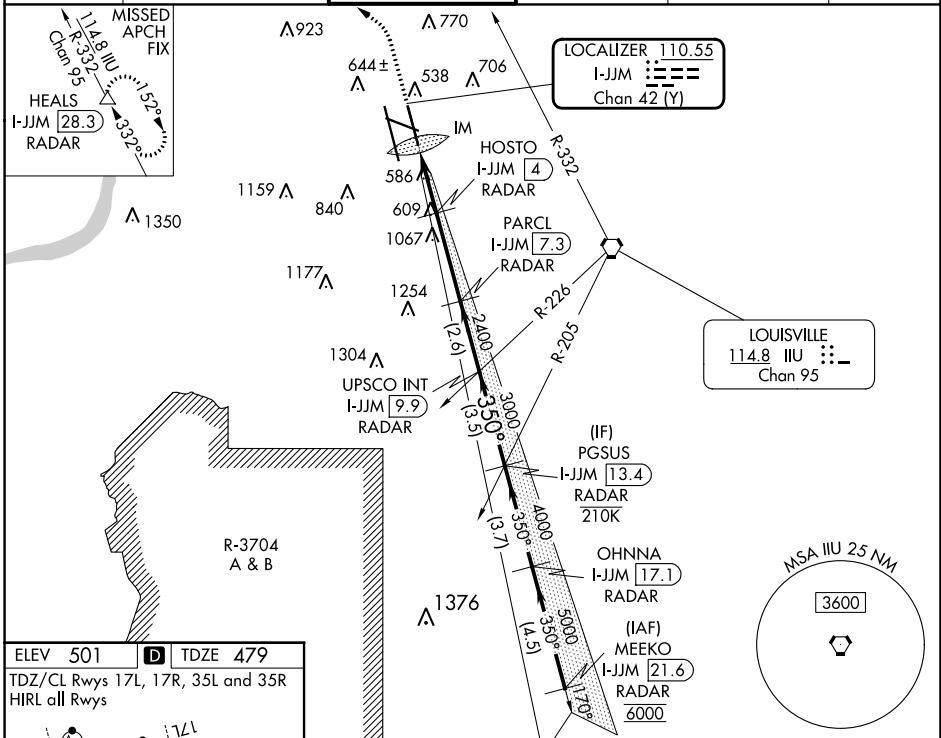
LOC/DME I-JJM 110.55 Chan 42 (Y)	APP CRS 350°	Rwy Idg TDZE Apt Elev	7800 479 501
--	------------------------	-----------------------------	---

ILS or LOC RWY 35R

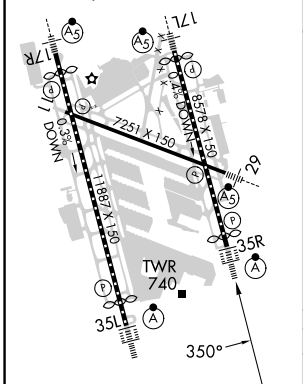
LOUISVILLE MUHAMMAD ALI INTL (SDF)

DME or RADAR required for LOC only.		ALSF-2	MISSED APPROACH: Climb to 2500 then climbing left turn to 4000 on heading 350° and on IIL VORTAC R-332 to HEALS/28.3 DME/RADAR and hold.
Simultaneous approach authorized. Circling Rwy 11 NA at night. For inop ALS, increase LOC Cat C/D to 5000 RVR.			

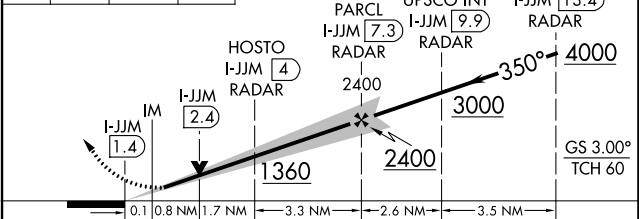
D-ATIS 118.725	LOUISVILLE APP CON 132.075 327.0	LOUISVILLE TOWER 124.2 257.8	GND CON 121.7 348.6	CLNC DEL 126.1 275.8	CPDLC
--------------------------	--	--	-------------------------------	--------------------------------	-------



ELEV 501	D TDZE 479
TDZ/CL Rwys 17L, 17R, 35L and 35R	
HIRL all Rwys	



2500	4000	HEALS	VGSI and ILS glidepath not coincident (VGSI Angle 3.00/TCH 72).
↑	hdg 350°	IIL R-332	



CATEGORY	A	B	C	D
S-ILS 35R	679/18 200 (200-1/2)			
S-LOC 35R	840/24	361 (400-1/2)	840/35	361 (400-3/4)
C CIRCLING	1040-1 539 (600-1)	1140-1 639 (700-1)	1160-1 3/4 659 (700-1 3/4)	1400-3 899 (900-3)

FAF to MAP 5.9 NM					
Knots	60	90	120	150	180
Min:Sec	5:54	3:56	2:57	2:22	1:58

SE-1, 08 AUG 2024 to 05 SEP 2024

SE-1, 08 AUG 2024 to 05 SEP 2024