

| | | |
|-------------|----------|--------------|
| APP CRS | Rwy Idg | 10000 |
| 350° | TDZE | 464 |
| | Apt Elev | 501 |

RNAV (RNP) Z RWY 35L

LOUISVILLE MUHAMMAD ALI INTL (SDF)

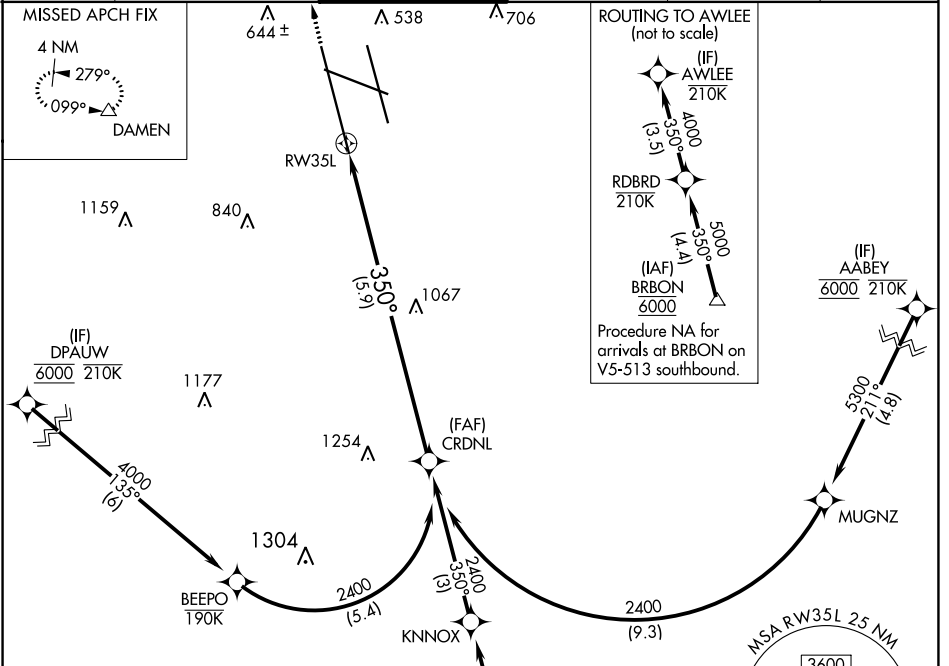
RNP AR APCH - GPS.

For uncompensated Baro-VNAV systems, procedure NA below -10°C or above 54°C. Simultaneous approach authorized. For inop ALS, increase RNP 0.11 all Cats visibility to RVR 4500.

ALSF-2

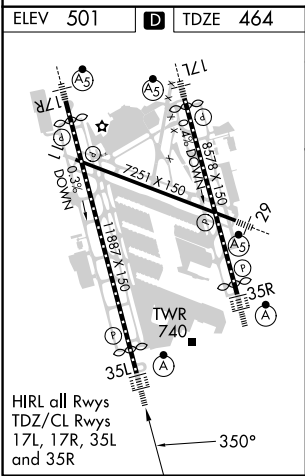
MISSED APPROACH: Climb to 1000 then climbing left turn to 4000 direct DAMEN and hold.

| | | | | | |
|----------------|----------------------|--------------------|--------------------|--------------------|-------|
| D-ATIS | LOUISVILLE APP CON | LOUISVILLE TOWER | GND CON | CLNC DEL | CPDLC |
| 118.725 | 132.075 327.0 | 124.2 257.8 | 121.7 348.6 | 126.1 275.8 | |



SE-1, 08 AUG 2024 to 05 SEP 2024

SE-1, 08 AUG 2024 to 05 SEP 2024



(IF) AWLEE 210K SEE INSET FOR ROUTING TO AWLEE

VGSI and RNAV glidepath not coincident (VGSI Angle 3.00/TCH 75).

CRDNL 2400

GP 3.00° TCH 59

5.9 NM

| | | | | |
|-------------|---|--------|-------------|---|
| CATEGORY | A | B | C | D |
| RNP 0.11 DA | | 769/24 | 305 (300-½) | |
| RNP 0.30 DA | | 897/40 | 433 (400-¾) | |

AUTHORIZATION REQUIRED