

WAAS CH <b>90101</b> <b>W17B</b>	APP CRS <b>170°</b>	Rwy Idg TDZE <b>499</b> Apt Elev <b>501</b>	<b>7800</b>
--	------------------------	---	-------------

# RNAV (GPS) Y RWY 17L

LOUISVILLE MUHAMMAD ALI INTL (SDF)

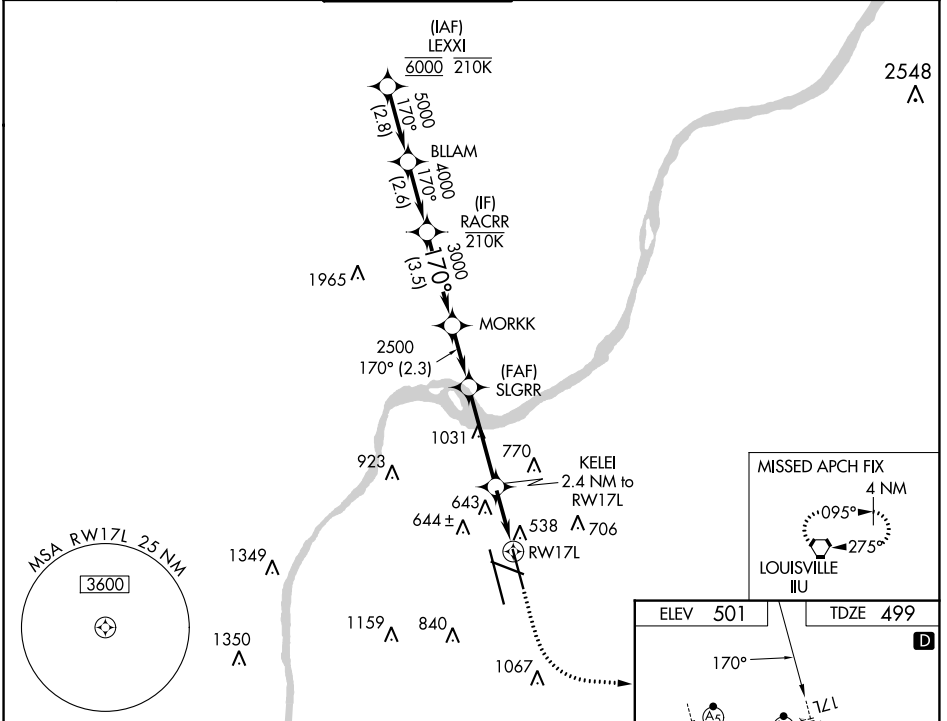
RNP APCH - GPS.

MISSED APPROACH: Climb to 1000 then climbing left turn to 3000 direct ILL VORTAC and hold, continue climb-in-hold to 3000.

Simultaneous approach authorized. Circling Rwy 11 NA at night. For uncompensated Baro-VNAV systems, LNAV/VNAV NA below -13°C or above 54°C. LNAV procedure NA during simultaneous operations. Use of FD or AP required during simultaneous operations. For inop ALS, increase LNAV/VNAV all Cats visibility to RVR 6000.

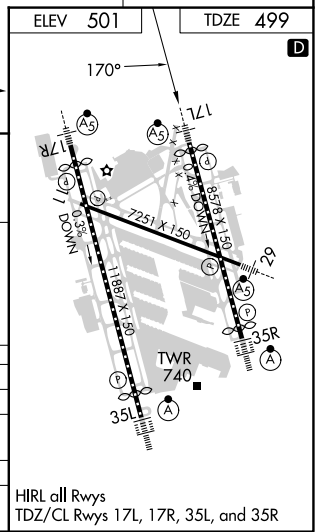
MALSRS

D-ATIS <b>118.725</b>	LOUISVILLE APP CON <b>132.075 327.0</b>	LOUISVILLE TOWER <b>124.2 257.8</b>	GND CON <b>121.7 348.6</b>	CLNC DEL <b>126.1 275.8</b>	CPDLC
--------------------------	--	--	-------------------------------	--------------------------------	-------



VGSI and RNAV glidepath not coincident (VGSI Angle 3.32/TCH 71).

RACRR	MORKK	SLGRR	KELEI	1000	3000	ILL
4000	3000	2500	2.4 NM to RW17L	↑	↷	⬠
GP 3.00° TCH 55	2500	1320	1 NM to RW17L			
	3.5 NM	2.3 NM	3.7 NM	1.4 NM	1 NM	
CATEGORY	A	B	C	D		
LPV DA		699/18	200 (200-½)			
LNAV/VNAV DA		909/40	410 (500-¾)			
LNAV MDA	920/24	421 (500-½)	920/40	421 (500-¾)		
CIRCLING	1040-1 539 (600-1)	1140-1 639 (700-1)	1160-1¾ 659 (700-1¾)	1400-3 899 (900-3)		



SE-1, 08 AUG 2024 to 05 SEP 2024

SE-1, 08 AUG 2024 to 05 SEP 2024