

CHLDR FIVE DEPARTURE (RNAV)

SE-1, 08 AUG 2024 to 05 SEP 2024

D-ATIS
127.75

CINC DEL
125.2

CPDIC

GND CON

121.0 379.2 (Rwy 9-27)

121.9 379.2 (Rwys 18C-36C,
18L-36R)

121.65 379.2 (Rwy 18R-36L)

MEMPHIS TOWER
118.3 257.8 (Rwy 9-27)

119.7 257.8 (Rwys 18C-36C,
18L-36R)

128.425 257.8 (Rwy 18R-36L)

MEMPHIS DEP CON
124.65 284.7

NOTE: DME/DME/IRU or GPS required.
RNAV 1.

NOTE: Turbojets only.

NOTE: Takeoff Rwys 18L/C/R, 36L/C/R:

NOTE: RADAR required for non-GPS equipped
aircraft.

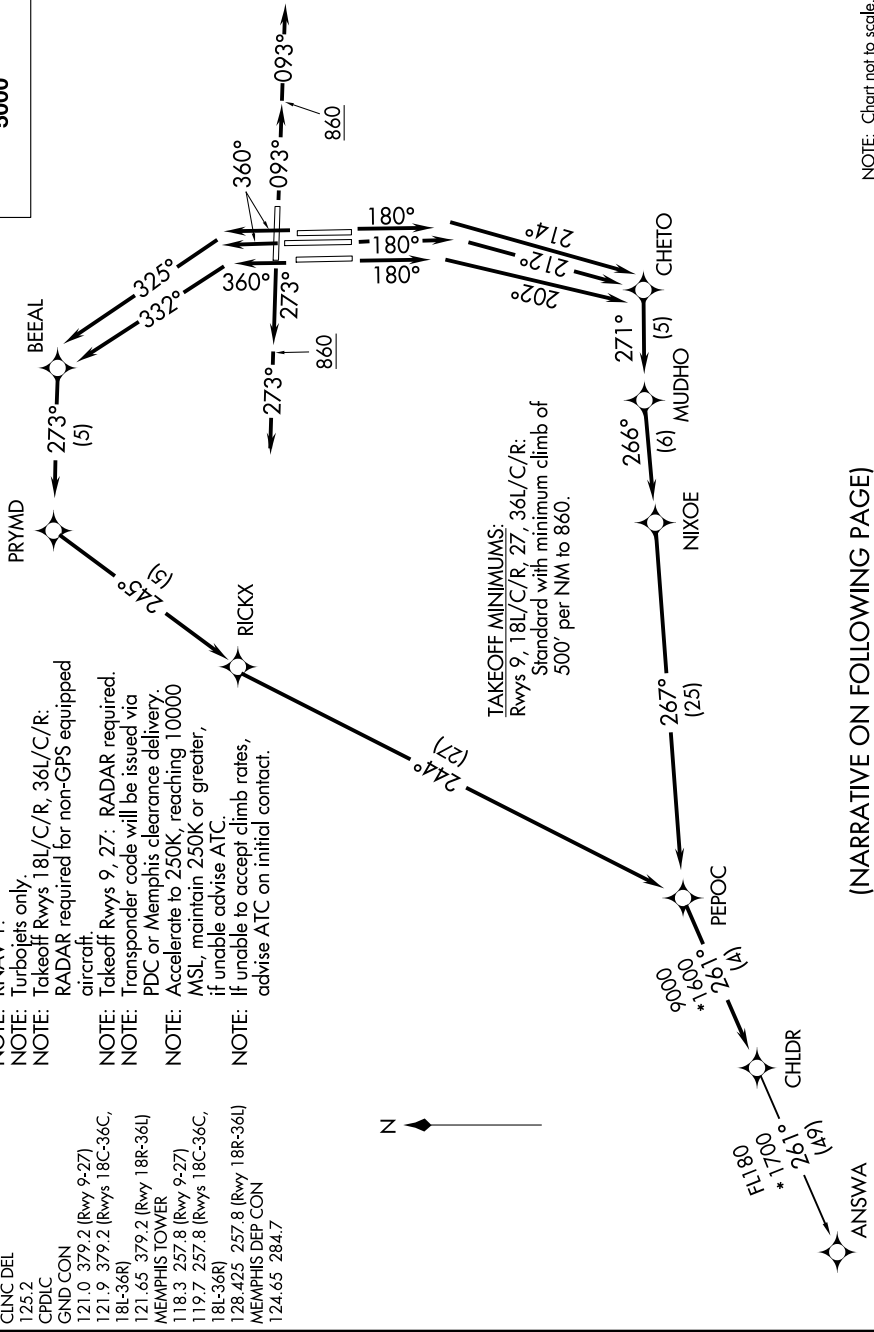
NOTE: Takeoff Rwys 9, 27: RADAR required.

NOTE: Transponder code will be issued via
PDC or Memphis clearance delivery.

NOTE: Accelerate to 250K, reaching 10000
MSL, maintain 250K or greater,
if unable advise ATC.

NOTE: If unable to accept climb rates,
advise ATC on initial contact.

TOP ALTITUDE:
5000



(NARRATIVE ON FOLLOWING PAGE)

NOTE: Chart not to scale.

SE-1, 08 AUG 2024 to 05 SEP 2024

CHLDR FIVE DEPARTURE (RNAV)

(CHLDR5.CHLDR) 31DEC20