

LOC/DME I-EXS <b>111.15</b> Chan <b>48(Y)</b>	APP CRS <b>180°</b>	Rwy Idg TDZE Apt Elev <b>9000</b> <b>301</b> <b>341</b>
---	------------------------	--

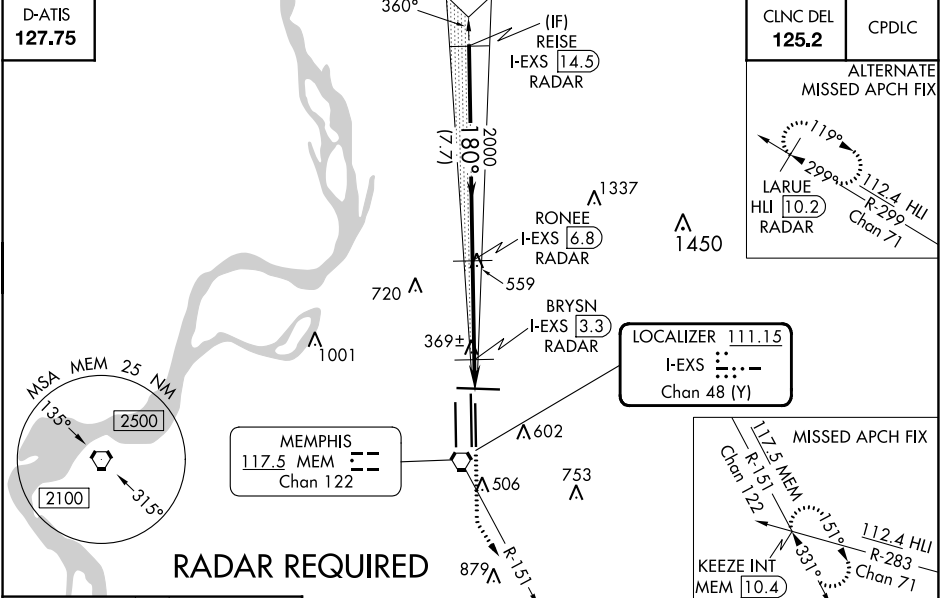
# ILS or LOC RWY 18L

MEMPHIS INTL (MEM)

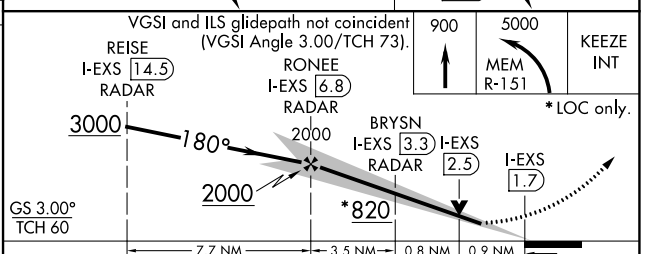
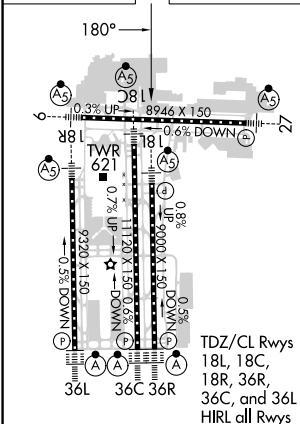
**Simultaneous approach authorized. DME or RADAR required.**  
For inop ALS, increase S-ILS 18L Cat E visibility to RVR 4000, S-LOC 18L Cat E visibility to 1 3/4 SM, BRYSN fix minimums, increase S-LOC 18L Cats D and E visibility to RVR 5000.

**MALSR**  
MISSED APPROACH: Climb to 900 then climbing left turn to 5000 on MEM VORTAC R-151 to KEEZE INT/MEM 10.4 DME and hold, continue climb-in-hold to 5000.

MEMPHIS APP CON <b>119.1 291.6</b> (176°-355°) <b>125.8 338.3</b> (356°-175°)	MEMPHIS TOWER (Rwy 9-27) <b>118.3 257.8</b> (Rwys 18C-36C, 18L-36R) <b>119.7 257.8</b> (Rwy 18R-36L) <b>128.425 257.8</b>	GND CON (Rwy 9-27) <b>121.0 379.2</b> (Rwys 18C-36C, 18L-36R) <b>121.9 379.2</b> (Rwy 18R-36L) <b>121.65 379.2</b>
---	--	---



ELEV 341	<b>D</b>	TDZE 301
----------	----------	----------



CATEGORY	A	B	C	D	E
S-ILS 18L	501/18 200 (200-1/2)				501/24 200 (200-1/2)
S-LOC 18L	820/24	519 (500-1/2)	820/50 519 (500-1)	820/60	519 (500-1/4)
<b>C</b> CIRCLING	940-1	599 (600-1)	940-1 1/2 599 (600-1 1/2)	1020-2 1/4 679 (700-2 1/4)	1140-2 3/4 799 (800-2 3/4)
BRYSN FIX MINIMUMS					
S-LOC 18L	620/24 319 (300-1/2)		620/40 319 (300-3/4)		
<b>C</b> CIRCLING	940-1	599 (600-1)	940-1 1/2 599 (600-1 1/2)	1020-2 1/4 679 (700-2 1/4)	1140-2 3/4 799 (800-2 3/4)

FAF to MAP 5.2 NM					
Knots	60	90	120	150	180
Min:Sec	5:12	3:28	2:36	2:05	1:44

SE-1, 08 AUG 2024 to 05 SEP 2024

SE-1, 08 AUG 2024 to 05 SEP 2024