

WAAS CH 93607 W27A	APP CRS 273°	Rwy Idg TDZE Apt Elev	8946 292 341
--	------------------------	-----------------------------	---

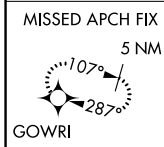
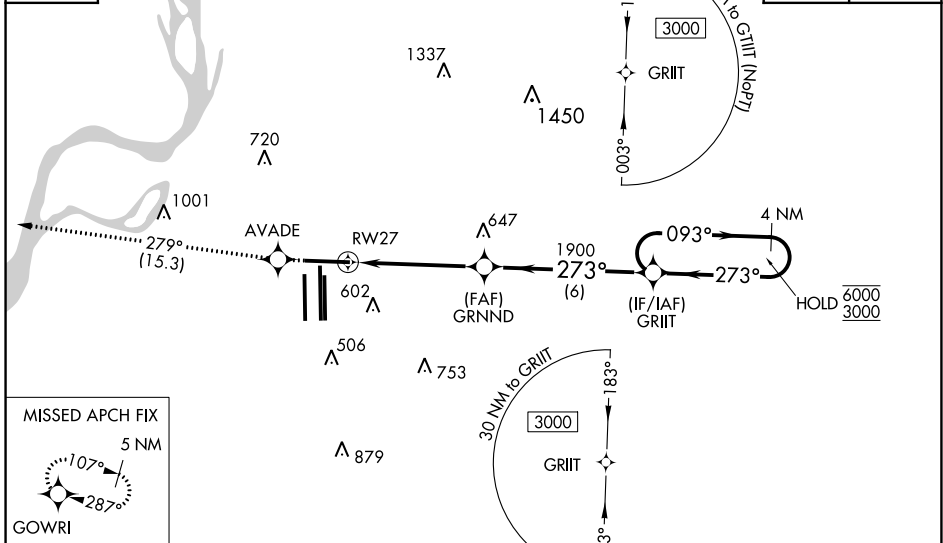
RNAV (GPS) RWY 27

MEMPHIS INTL (MEM)

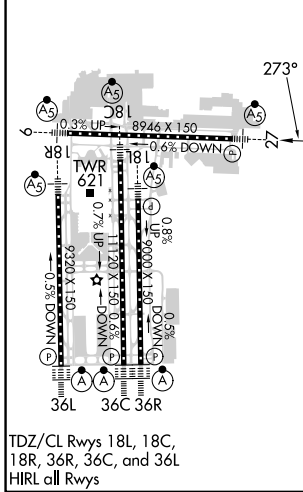
RNP APCH - GPS.	MALSR	MISSED APPROACH: Climb to 5000 direct AVADE and on track 279° to GOWRI and hold, continue climb-in-hold to 5000.
<p>▼ For uncompensated Baro-VNAV systems, LNAV/VNAV NA below -9°C or above 54°C. For inop ALS, increase LNAV Cat C and D visibility to 1 3/8 SM.</p> <p>▲ *RVR 1800 authorized with use of FD or AP or HUD to DA.</p>		

MEMPHIS APP CON	MEMPHIS TOWER	GND CON
119.1 291.6 (176°-355°)	(Rwy 9-27) 118.3 257.8	(Rwy 9-27) 121.0 379.2
125.8 338.3 (356°-175°)	(Rwys 18C-36C, 18L-36R) 119.7 257.8	(Rwys 18C-36C, 18L-36R) 121.9 379.2
	(Rwy 18R-36L) 128.425 257.8	(Rwy 18R-36L) 121.65 379.2

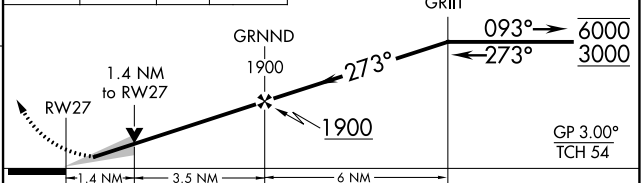
D-ATIS 127.75	CLNC DEL 125.2	CPDLC
-------------------------	--------------------------	-------



ELEV 341	D	TDZE 292
----------	----------	----------



5000	AVADE	tr 279°	GOWRI	VGSI and RNAV glidepath not coincident (VGSI Angle 3.00/TCH 69). 4 NM Holding Pattern
------	-------	---------	-------	---



CATEGORY	A	B	C	D
LPV DA *	492/24 200 (200-1/2)			
LNAV/VNAV DA	745/50 453 (500-1)			
LNAV MDA	800/24 508 (500-1/2)	800/55 508 (500-1)		
<input checked="" type="checkbox"/> CIRCLING	940-1 599 (600-1)	940-1 1/2 599 (600-1 1/2)	1020-2 1/4 679 (700-2 1/4)	

SE-1, 08 AUG 2024 TO 05 SEP 2024

SE-1, 08 AUG 2024 TO 05 SEP 2024