

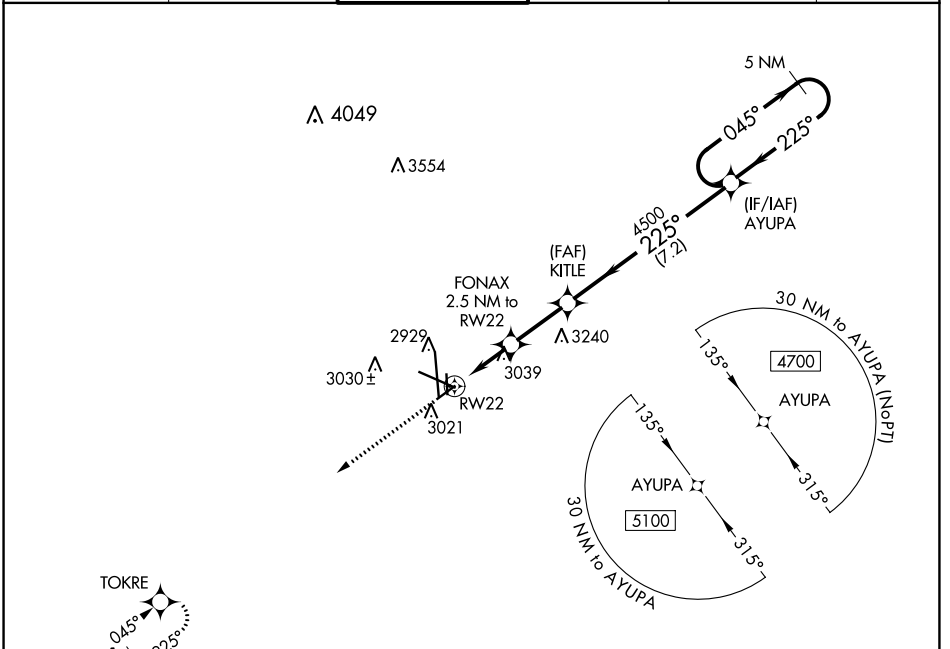
WAAS CH 50429 W22A	APP CRS 225°	Rwy Idg TDZE Apt Elev	4605 2855 2872
--	------------------------	-----------------------------	---

RNAV (GPS) RWY 22

MIDLAND INTL AIR AND SPACE PORT (M.A.F.)

RNP APCH.	MISSED APPROACH: Climb to 5000 direct TOKRE and hold.			
▽ For uncompensated Baro-VNAV systems, LNAV/VNAV NA below -11°C or above 25°C. Circling Rwy 16L NA at night.				

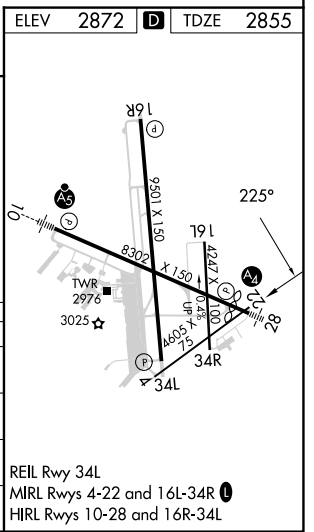
ATIS 126.8 235.975	MIDLAND APP CON* 124.6 290.4	MIDLAND TOWER* 118.7 (CTAF) 0273.45	GND CON 121.9 348.6	CLNC DEL 118.05 317.65	UNICOM 122.95
------------------------------	--	---	-------------------------------	----------------------------------	-------------------------



SC-3, 08 AUG 2024 to 05 SEP 2024

SC-3, 08 AUG 2024 to 05 SEP 2024

ELEV	2872	D	TDZE	2855
5000	TOKRE			
*LNAV only	FONAX 2.5 NM to RW22	KITLE 4500	AYUPA 4700	5 NM Holding Pattern
	*1.3 NM to RW22	*3700	4500	GP 3.00° TCH 50
	1.3	1.2	2.5 NM	7.2 NM
CATEGORY	A	B	C	D
LPV DA		3055-3/4	200 (200-3/4)	
LNAV/VNAV DA		3317-13/8	462 (500-13/8)	
LNAV MDA	3320-1	465 (500-1)	3320-13/8	465 (500-13/8)
C CIRCLING	3440-1	568 (600-1)	3440-1 1/2	3520-2
			568 (600-1 1/2)	648 (700-2)



REIL Rwy 34L
MIRL Rws 4-22 and 16L-34R
HIRL Rws 10-28 and 16R-34L