

MIDLAND, TEXAS

AL-258 (FAA)

23334

WAAS CH 66029 W34A	APP CRS 346°	Rwy Idg TDZE Apt Elev	9501 2858 2872
--	------------------------	-----------------------------	---

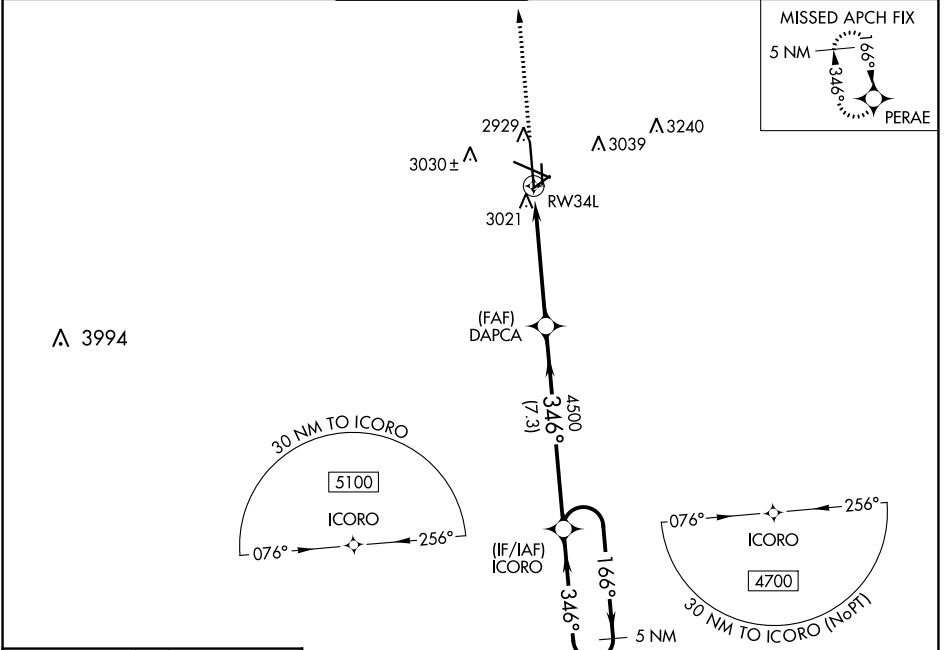
RNAV (GPS) RWY 34L

MIDLAND INTL AIR AND SPACE PORT (M.A.F.)

V For uncompensated Baro-VNAV systems, LNAV/VNAV NA below -11°C (13°F) or above 26°C (78°F). Circling Rwy 16L NA at night. DME/DME RNP-0.3 NA.

MISSED APPROACH: Climb to 5100 direct PERAE and hold.

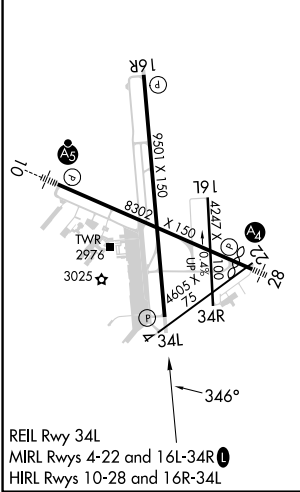
ATIS 126.8 235.975	MIDLAND APP CON* 124.6 290.4	MIDLAND TOWER* 118.7(CTAF) 0273.45	GND CON 121.9 348.6	CLNC DEL 118.05 317.65	UNICOM 122.95
------------------------------	--	--	-------------------------------	----------------------------------	-------------------------



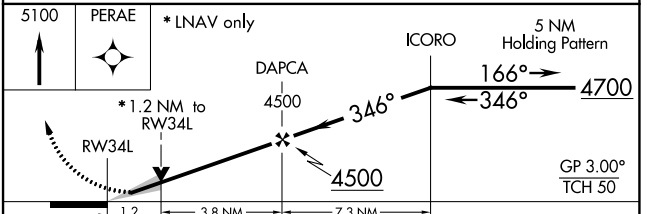
SC-3, 08 AUG 2024 to 05 SEP 2024

SC-3, 08 AUG 2024 to 05 SEP 2024

ELEV	2872	D	TDZE	2858
------	------	----------	------	------



REIL Rwy 34L
MIRL Rwy 4-22 and 16L-34R
HIRL Rwy 10-28 and 16R-34L



CATEGORY	A	B	C	D
LPV DA	3058- ³ / ₄		200 (200- ³ / ₄)	
LNAV/VNAV DA	3203-1 ¹ / ₈		345 (400-1 ¹ / ₈)	
LNAV MDA	3280-1	422 (500-1)	3280-1 ¹ / ₄	422 (500-1 ¹ / ₄)
CIRCLING	3440-1	568 (600-1)	3440-1 ¹ / ₂ 568 (600-1 ¹ / ₂)	3520-2 648 (700-2)

MIDLAND, TEXAS
Amdt 1B 22JUN17

MIDLAND INTL AIR AND SPACE PORT (M.A.F.)
31°57'N-102°12'W
RNAV (GPS) RWY 34L