

VORTAC MAF <b>114.8</b> Chan <b>95</b>	APP CRS <b>357°</b>	Rwy Idg TDZE Apt Elev	<b>9501</b> <b>2858</b> <b>2872</b>
--	------------------------	-----------------------------	---

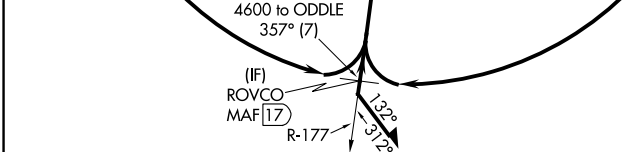
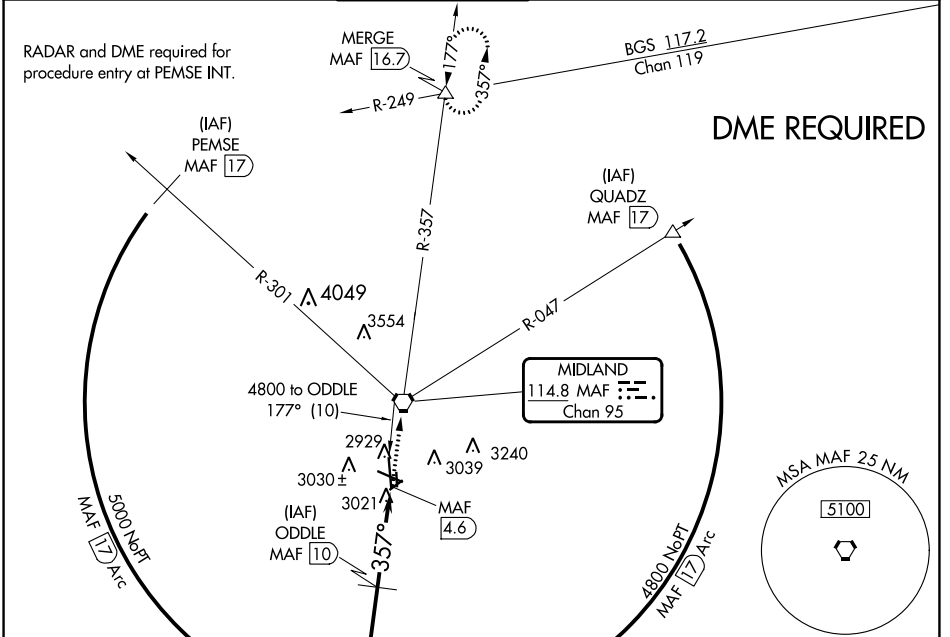
# VOR or TACAN RWY 34L

MIDLAND INTL AIR AND SPACE PORT (MAF)

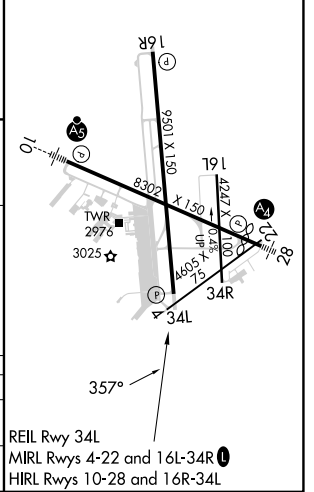
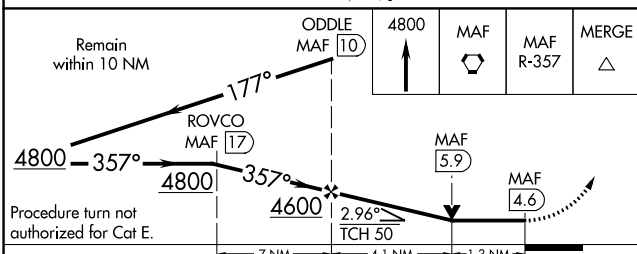
**⚠** Circling Rwy 16L NA at night. Rwy 34L helicopter visibility reduction below 3/4 SM NA. DME required.

**⚠** MISSED APPROACH: Climb to 4800 direct MAF VORTAC and on MAF VORTAC R-357 to MERGE INT/MAF 16.7 DME and hold.

ATIS <b>126.8 235.975</b>	MIDLAND APP CON * <b>124.6 290.4</b>	MIDLAND TOWER * <b>118.7 (CTAF) 0273.45</b>	GND CON <b>121.9 348.6</b>	CLNC DEL <b>118.05 317.65</b>	UNICOM <b>122.95</b>
------------------------------	---	--	-------------------------------	----------------------------------	-------------------------



ELEV 2872	<b>D</b> TDZE 2858
-----------	--------------------



CATEGORY	A	B	C	D	E
S-34L	3320-1	462 (500-1)	3320-1 3/8	462 (500-1 3/8)	
CIRCLING	3440-1	568 (600-1)	3440-1 1/2 568 (600-1 1/2)	3520-2 648 (700-2)	3600-2 1/2 728 (800-2 1/2)

SC-3, 08 AUG 2024 to 05 SEP 2024

SC-3, 08 AUG 2024 to 05 SEP 2024