

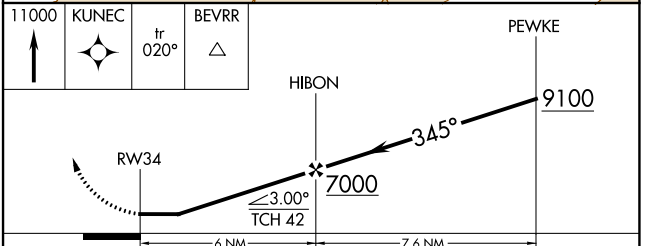
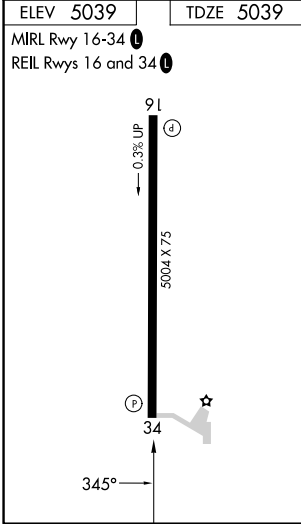
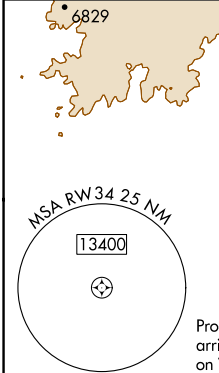
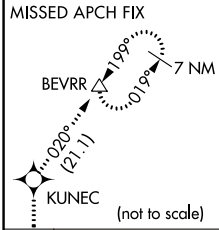
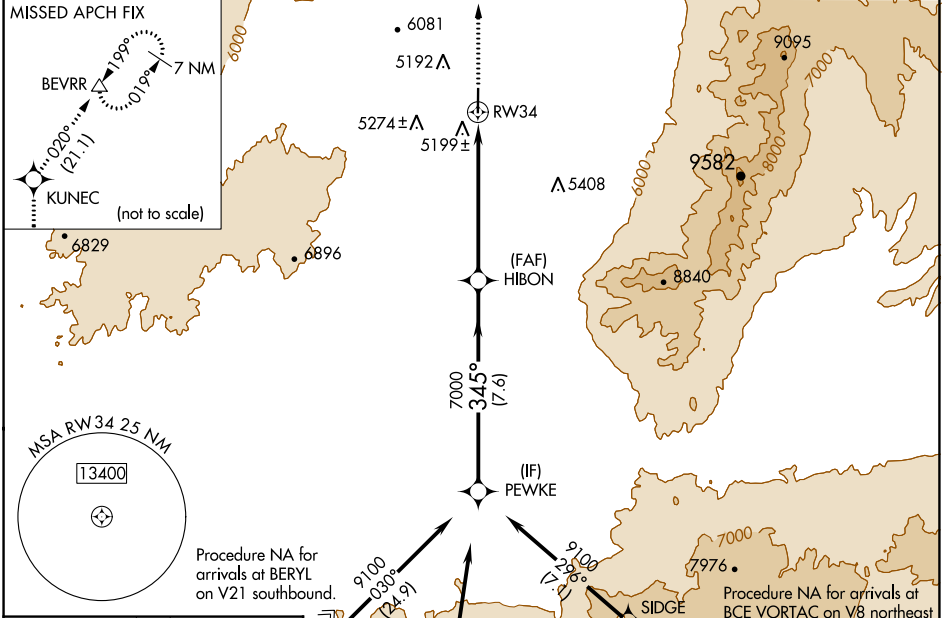
APP CRS	Rwy Idg	5004
345°	TDZE	5039
	Apt Elev	5039

RNAV (GPS) RWY 34

MILFORD MUNI/BEN AND JUDY BRISCOE FLD (MLF)

RNP APCH.	<p>When local altimeter setting not received, use Cedar City altimeter setting and increase all MDA 180 feet; increase LNAV Cat C/D visibility ½ mile.</p> <p>☁ -27°C</p>	<p>MISSED APPROACH: Climb to 11000 direct KUNEC and on track 020° to BEVRR and hold, continue climb-in-hold to 11000.</p>
-----------	---	---

ASOS 135.025	SALT LAKE CENTER 125.575 379.275	UNICOM 122.8 (CTAF)
------------------------	--	-------------------------------



CATEGORY	A	B	C	D
LNAV MDA	5460-1	421 (500-1)	5460-1¼	421 (500-1¼)

SW-4, 08 AUG 2024 to 05 SEP 2024

SW-4, 08 AUG 2024 to 05 SEP 2024