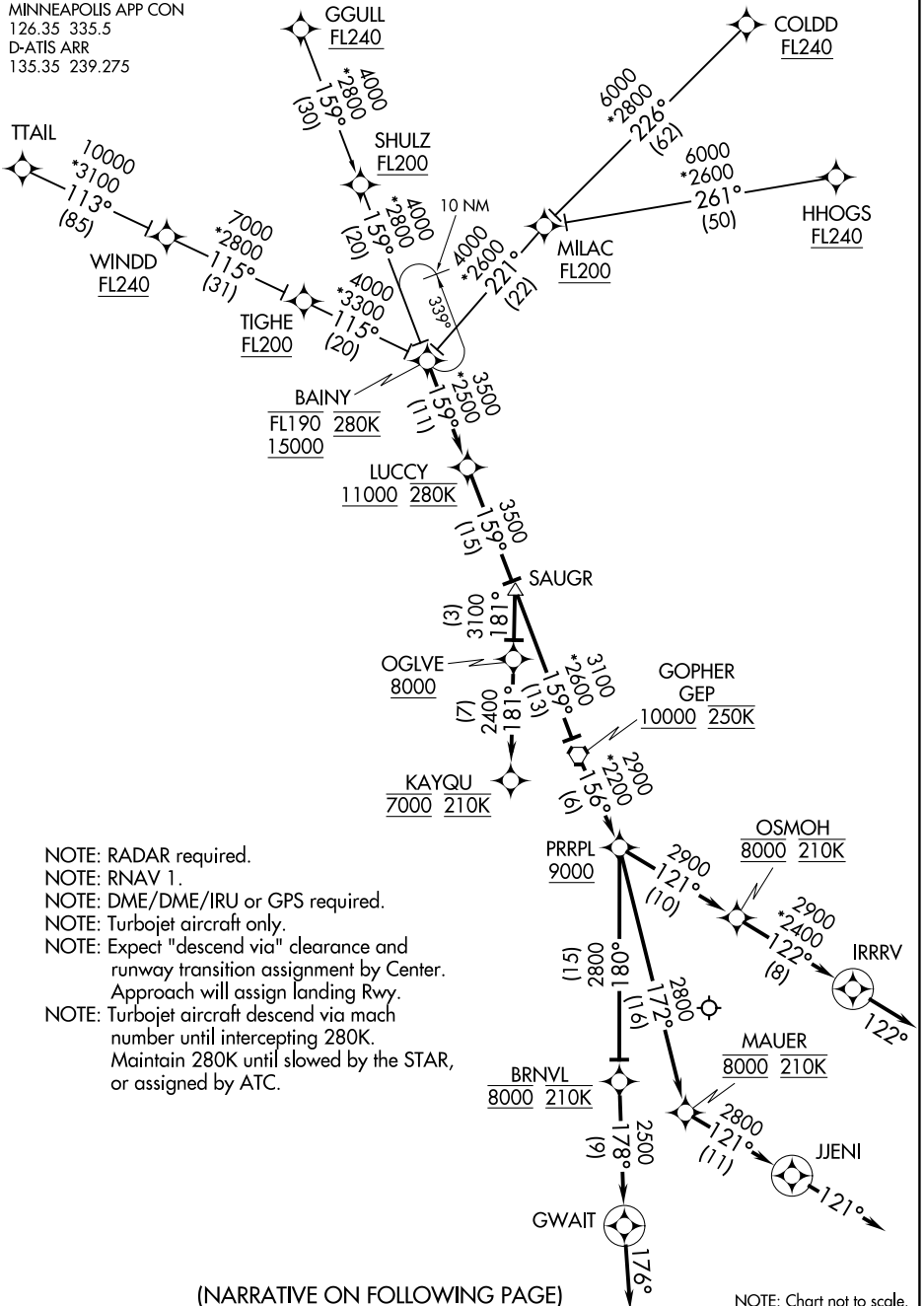


(BAINY.BAINY3) 17173

MINNEAPOLIS-ST PAUL INTL/WOLD-CHAMBERLAIN (MSP)
AL-264 (FAA) MINNEAPOLIS, MINNESOTA

BAINY THREE ARRIVAL (RNAV)

MINNEAPOLIS APP CON
126.35 335.5
D-ATIS ARR
135.35 239.275



- NOTE: RADAR required.
- NOTE: RNAV 1.
- NOTE: DME/DME/IRU or GPS required.
- NOTE: Turbojet aircraft only.
- NOTE: Expect "descend via" clearance and runway transition assignment by Center. Approach will assign landing Rwy.
- NOTE: Turbojet aircraft descend via mach number until intercepting 280K. Maintain 280K until slowed by the STAR, or assigned by ATC.

(NARRATIVE ON FOLLOWING PAGE)

NOTE: Chart not to scale.

BAINY THREE ARRIVAL (RNAV)

MINNEAPOLIS-ST PAUL INTL/WOLD-CHAMBERLAIN (MSP)
MINNEAPOLIS, MINNESOTA

(BAINY.BAINY3) 05JAN17

NC-1, 08 AUG 2024 to 05 SEP 2024

NC-1, 08 AUG 2024 to 05 SEP 2024