

(HSTIN6.HSTIN) 22363

MINNEAPOLIS-ST PAUL INTL/WOLD-CHAMBERLAIN (MSP)

# HESTIN SIX DEPARTURE (RNAV)

AL-264 (FAA)

MINNEAPOLIS, MINNESOTA

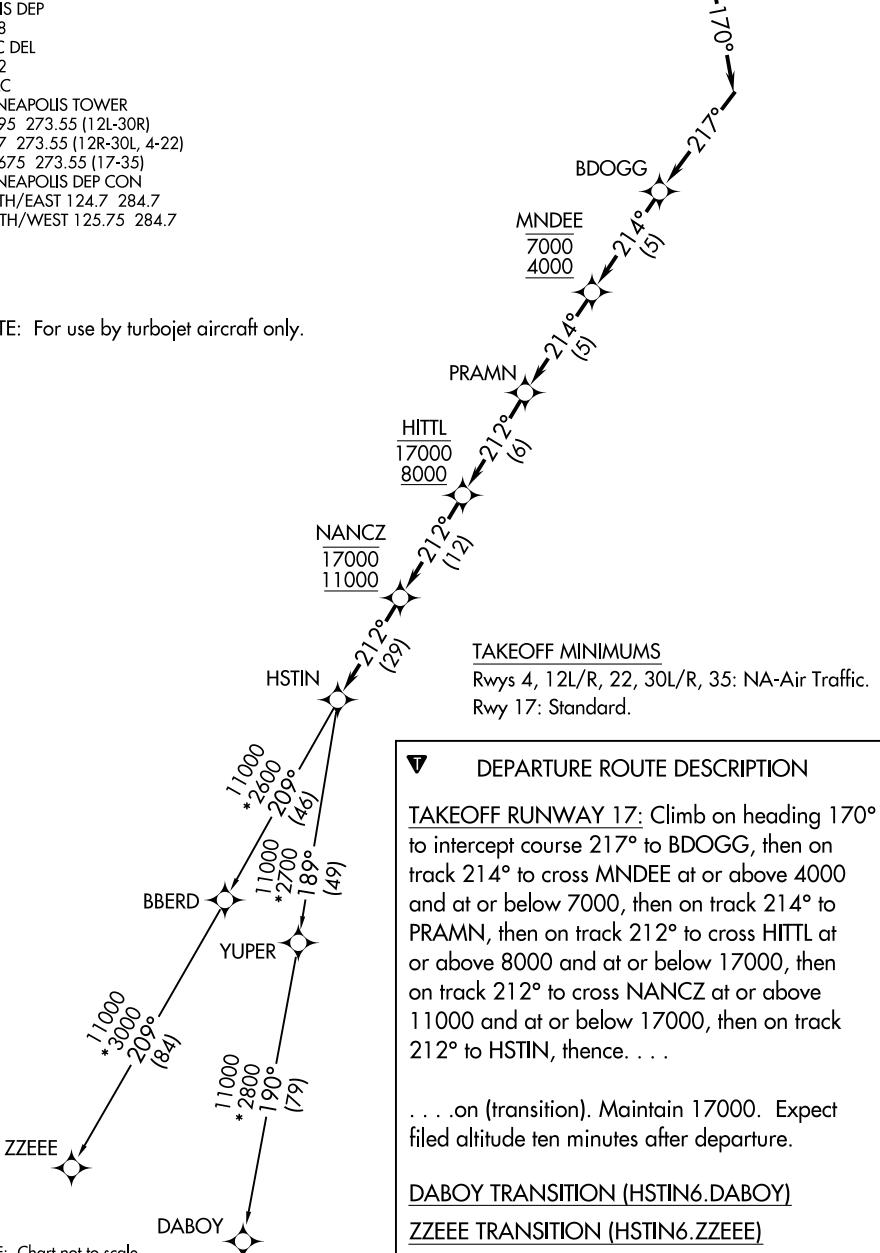
RNAV 1 - DME/DME/IRU or GPS.

RADAR required for non-GPS equipped aircraft.

D-ATIS DEP  
 120.8  
 CLNC DEL  
 133.2  
 CPDLC  
 MINNEAPOLIS TOWER  
 123.95 273.55 (12L-30R)  
 126.7 273.55 (12R-30L, 4-22)  
 123.675 273.55 (17-35)  
 MINNEAPOLIS DEP CON  
 SOUTH/EAST 124.7 284.7  
 NORTH/WEST 125.75 284.7

NOTE: For use by turbojet aircraft only.

**TOP ALTITUDE:**  
**17000**



### TAKEOFF MINIMUMS

Rwys 4, 12L/R, 22, 30L/R, 35: NA-Air Traffic.  
 Rwy 17: Standard.

### DEPARTURE ROUTE DESCRIPTION

**TAKEOFF RUNWAY 17:** Climb on heading 170° to intercept course 217° to BDOGG, then on track 214° to cross MNDEE at or above 4000 and at or below 7000, then on track 214° to PRAMN, then on track 212° to cross HITTL at or above 8000 and at or below 17000, then on track 212° to cross NANCZ at or above 11000 and at or below 17000, then on track 212° to HSTIN, thence. . . .

. . . .on (transition). Maintain 17000. Expect filed altitude ten minutes after departure.

DABOY TRANSITION (HSTIN6.DABOY)

ZEEEE TRANSITION (HSTIN6.ZEEEE)

NOTE: Chart not to scale.

NC-1, 08 AUG 2024 to 05 SEP 2024

NC-1, 08 AUG 2024 to 05 SEP 2024

# HESTIN SIX DEPARTURE (RNAV)

MINNEAPOLIS, MINNESOTA

(HSTIN6.HSTIN) 29DEC22

MINNEAPOLIS-ST PAUL INTL/WOLD-CHAMBERLAIN (MSP)