

WLSTN SEVEN DEPARTURE

NC-1, 08 AUG 2024 to 05 SEP 2024

**TOP ALTITUDE:
(JETS) 7000/
(PROPS) 5000**

MINNEAPOLIS DEP CON
 SOUTH/EAST 124.7 335.65
 NORTH/WEST 125.75 335.65
 D-ATIS DEP 120.8
 CLNC DEL 133.2
 CPDLC

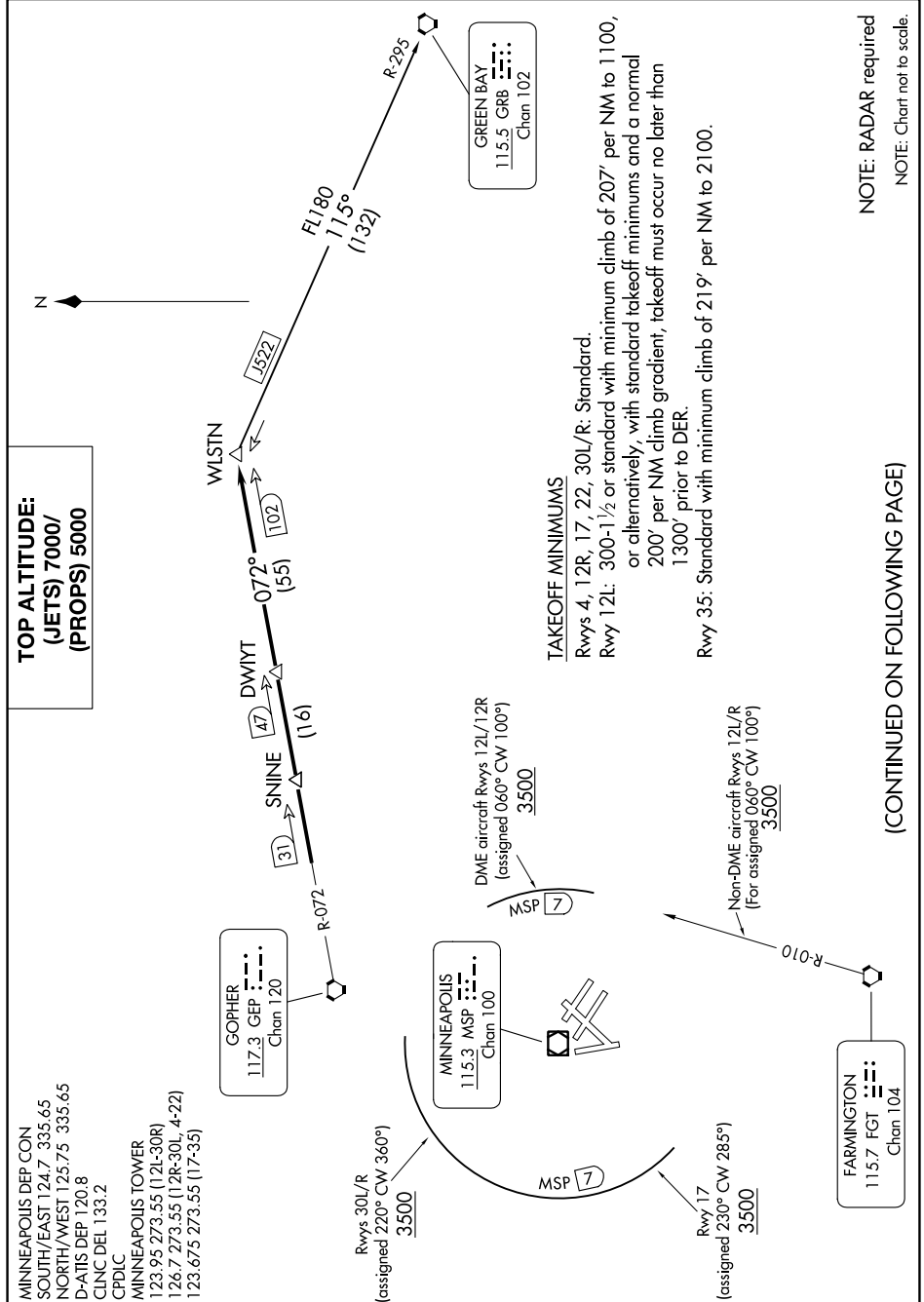
MINNEAPOLIS TOWER
 123.95 273.55 (12L-30R)
 126.7 273.55 (12R-30L, 4-22)
 123.675 273.55 (17-35)

GOPHER
 117.3 GEP
 Chan 120

MINNEAPOLIS
 115.3 MSP
 Chan 100

FARMINGTON
 115.7 FGT
 Chan 104

GREEN BAY
 115.5 GRB
 Chan 102



TAKEOFF MINIMUMS

Rwys 4, 12R, 17, 22, 30L/R: Standard.
 Rwy 12L: 300-1½ or standard with minimum climb of 207' per NM to 1100, or alternatively, with standard takeoff minimums and a normal 200' per NM climb gradient, takeoff must occur no later than 1300' prior to DER.
 Rwy 35: Standard with minimum climb of 219' per NM to 2100.

DME aircraft Rwys 12L/12R
 (assigned 060° CW 100°)
3500

Non-DME aircraft Rwys 12L/R
 (For assigned 060° CW 100°)
3500

Rwys 30L/R
 (assigned 220° CW 360°)
3500

Rwy 17
 (assigned 230° CW 285°)
3500

(CONTINUED ON FOLLOWING PAGE)

NOTE: RADAR required
NOTE: Chart not to scale.

WLSTN SEVEN DEPARTURE

NC-1, 08 AUG 2024 to 05 SEP 2024