

LOC/DME I- <b>RJ</b>	APP CRS	Rwy Idg	<b>9618</b>
<b>108.5</b>	<b>320°</b>	TDZE	<b>25</b>
Chan <b>22</b>		Apt Elev	<b>26</b>

# ILS or LOC RWY 32

MOBILE INTL (BFM)

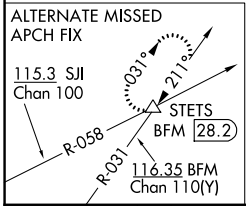
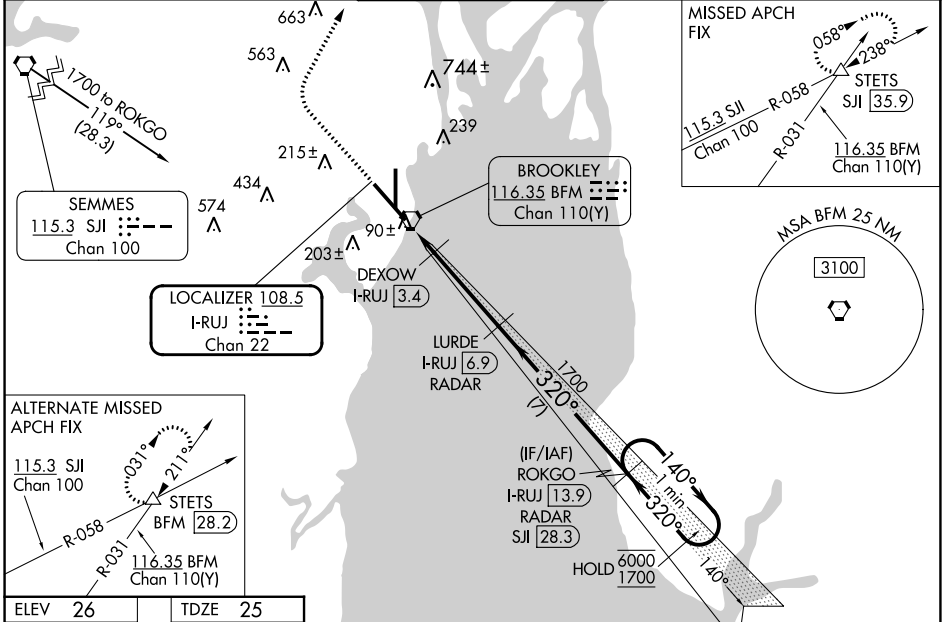
DME or RADAR required.

**⚠** For inop ALS, increase S-LOC 32 Cat C/D visibility to 1¾ and DEXOW S-LOC 32 Cat C/D visibility to RVR 4500.

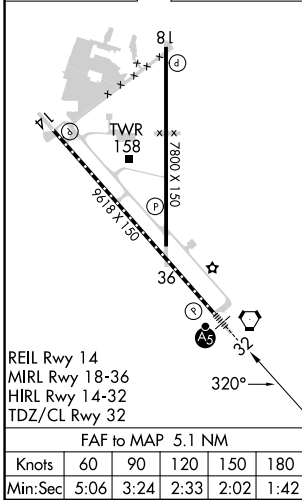
MALS R

**MISSED APPROACH:** Climb to 800 then climbing right turn to 2000 on heading 030° and on SJJ R-058 to STETS INT/SJJ 35.9 DME and hold.

ATIS <b>135.575</b>	MOBILE APP CON ★ <b>118.5 269.3</b>	INTERNATIONAL TOWER ★ <b>118.8 (CTAF) 251.1</b>	GND CON <b>121.7 239.3</b>	UNICOM <b>122.95</b>
------------------------	--	--	-------------------------------	-------------------------



ELEV 26	TDZE 25
---------	---------



800	2000	SJJ R-058	STETS	VGSI and ILS glidepath not coincident (VGSI Angle 3.00/TCH 71).
hdg 030°				LURDE I- <b>RJ</b> [6.9] RADAR
				ROKGO I- <b>RJ</b> [13.9] RADAR
				DEXOW I- <b>RJ</b> [3.4]
				I- <b>RJ</b> [1.8]
				I- <b>RJ</b> [2.6]
				1700
				580
				1700
				320°
				140°
				6000
				1700
				GS 3.00°
				TCH 55
				0.9 NM
				0.8 NM
				3.5 NM
				7 NM
CATEGORY	A	B	C	D
S-ILS 32		225/18	200 (200-½)	
S-LOC 32	580/24	555 (600-½)	580/60	555 (600-1¼)
<b>C</b> CIRCLING	680-1	654 (700-1)	680-1¾ 654 (700-1¾)	1100-3 1074 (1100-3)
	DEXOW FIX MINIMUMS			
S-LOC 32		340/24	315 (400-½)	
<b>C</b> CIRCLING	680-1	654 (700-1)	680-1¾ 654 (700-1¾)	1100-3 1074 (1100-3)

SE-4, 08 AUG 2024 to 05 SEP 2024

SE-4, 08 AUG 2024 to 05 SEP 2024