

MT. CLEMENS, MICHIGAN

# ILS or LOC/DME RWY 19

LOC I-MTC <b>110.1</b>	APCH CRS <b>187°</b>	Rwy Ldg THRE Arpt Elev <b>9000</b> <b>579</b> <b>580</b>	AL-276 [USAF]	SELFRIDGE ANGB (KMTC)
---------------------------	-------------------------	---	---------------	-----------------------

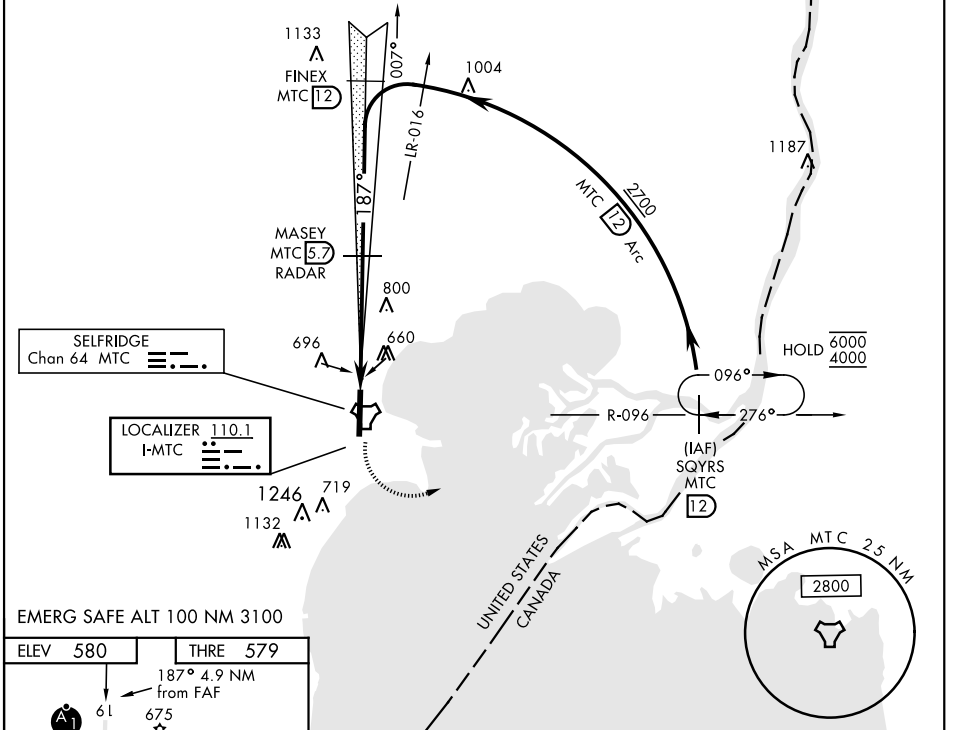
▼ \* When ALS inop, increase RVR to 55, vis to 1 mile.  
 \*\* When ALS inop, increase CAT AB RVR to 55, vis to 1 mile, CAT CDE vis to 1½ miles.

ALSF-1

MISSED APPROACH: Climbing left turn to 4000, intercept MTC R-096 to SQYRS and hold, continue climb-in-hold to 4000.

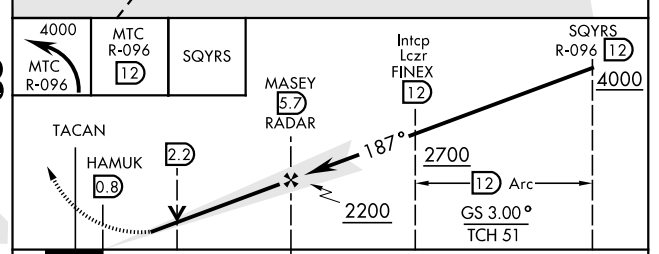
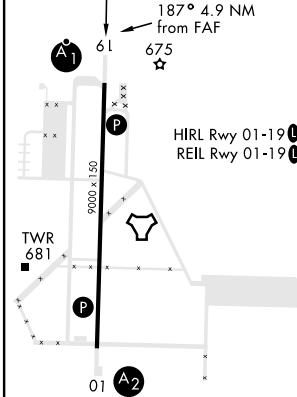
ATIS <b>125.325 270.1</b>	SELFRIDGE APP CON <b>119.6 318.2</b>	SELFRIDGE TOWER ★ <b>120.15 (CTAF) 0 225.4</b>	GND CON <b>128.3 275.8</b>	CLNC DEL <b>128.3 275.8</b>
------------------------------	---	---	-------------------------------	--------------------------------

\*\*\* Circling not authorized W of Rwy 01-19.



EMERG SAFE ALT 100 NM 3100

ELEV 580	THRE 579
----------	----------



CATEGORY	A	B	C	D	E
S-ILS 19*	923/40		344	(400-¾)	
S-LOC 19**	1080/40	501 (600-¾)	1080/55	501 (600-1)	
CIRCLING ***	1120-1	541 (600-1)	1120-1½	541 (600-1½)	1140-2 561 (600-2)

FAF to MAP 4.9 NM					
Knots	60	90	120	150	180
Min:Sec	4:54	3:16	2:27	1:58	1:38

MT. CLEMENS, MICHIGAN 42°37'N-82°50'W SELFRIDGE ANGB (KMTC)

Amtd 3 23AUG12

# ILS or LOC/DME RWY 19

EC-1, 08 AUG 2024 to 05 SEP 2024

EC-1, 08 AUG 2024 to 05 SEP 2024