

LOC I-MSL <b>109.7</b>	APP CRS <b>297°</b>	Rwy Idg TDZE Apt Elev	<b>6694</b> <b>551</b> <b>551</b>
---------------------------	------------------------	-----------------------------	---

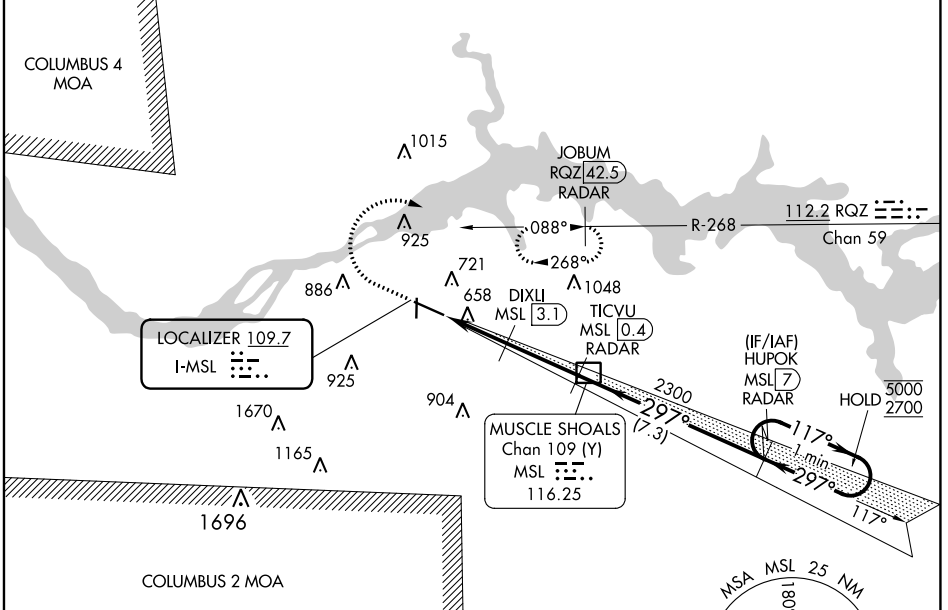
# ILS Z or LOC Z RWY 30

NORTHWEST ALABAMA RGNL (MSL)

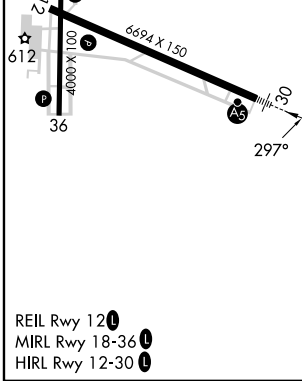
DME required. RADAR required.

**MALS R** MISSED APPROACH: Climb to 1200 then climbing right turn to 3000 on heading 020° to intercept RQZ VORTAC R-268 to JOBUM/RQZ VORTAC 42.5 DME/RADAR and hold, continue climb-in-hold to 3000.

ASOS <b>119.425</b>	MEMPHIS CENTER <b>120.8 307.0</b>	GCO <b>121.725</b>	UNICOM <b>123.05 (CTAF)</b>
------------------------	--------------------------------------	-----------------------	--------------------------------



ELEV 551	TDZE 551
----------	----------



1200	3000	RQZ R-268	JOBUM RQZ 42.5 RADAR	TICVU MSL 0.4 RADAR	MSL DME	HUPOK MSL 7 RADAR	One Minute Holding Pattern
hdg 020°		DIXLI MSL 3.1	MSL 4.6	MSL 5.6	2300	297°	117°
1400		2300		5000		2700	
1 NM		1.5 NM		2.8 NM		7.3 NM	
GS 3.00°		TCH 59°					

CATEGORY	A	B	C	D
S-ILS 30	751-1/2		200 (200-1/2)	
S-LOC 30	920-1/2 369 (400-1/2)		920-5/8 369 (400-5/8)	
<b>C</b> CIRCLING	1040-1 489 (500-1)		1280-2 729 (800-2) 1280-2 1/4 729 (800-2 1/4)	

SE-4, 08 AUG 2024 to 05 SEP 2024

SE-4, 08 AUG 2024 to 05 SEP 2024