

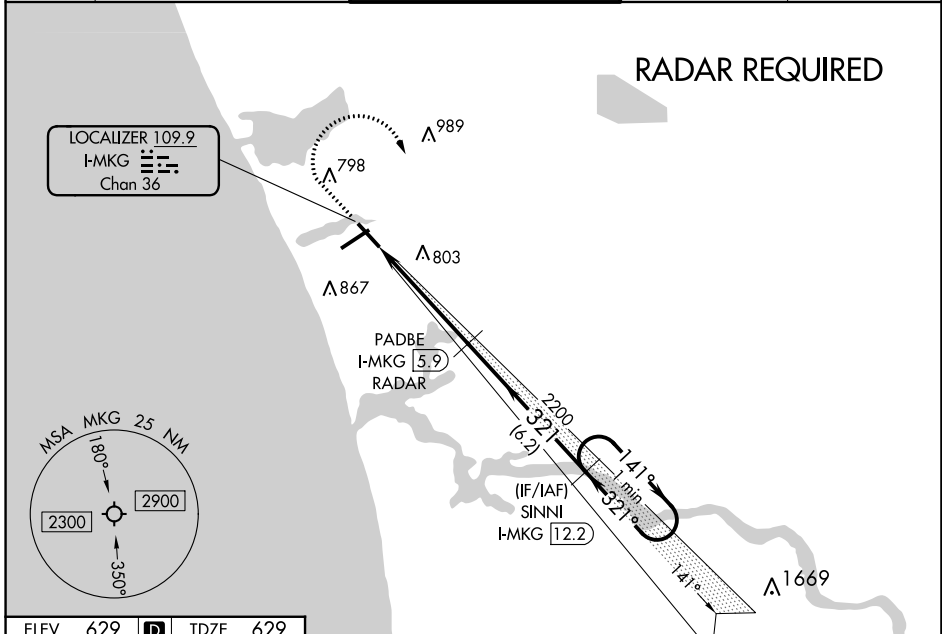
LOC/DME I-MKG <b>109.9</b> Chan <b>36</b>	APP CRS <b>321°</b>	Rwy Idg <b>6100</b> TDZE <b>629</b> Apt Elev <b>629</b>
---	------------------------	---

# ILS or LOC RWY 32

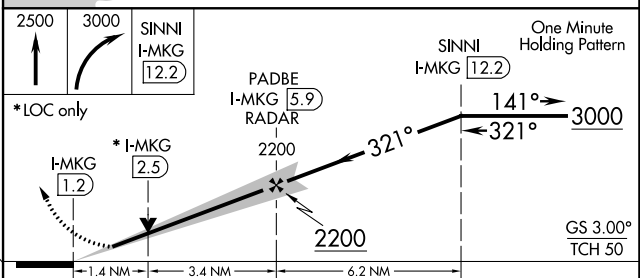
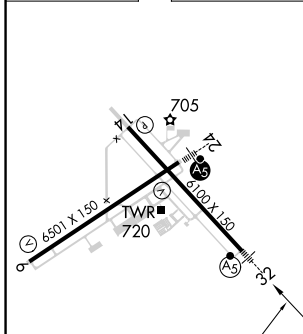
MUSKEGON COUNTY (MKG)

DME or RADAR required. RNAV 1-GPS required.		MALSR 	MISSED APPROACH: Climb to 2500 then climbing right turn to 3000 direct SINNI and hold.	
 For inop ALS, increase S-LOC Cat C/D visibility to 1 1/2 SM. **RVR 1800 authorized with use of FD or AP or HUD to DA.				

ATIS <b>124.3</b>	GREAT LAKES APP CON * <b>119.8 290.35</b> (North) <b>133.825 290.35</b> (South)	MUSKEGON TOWER* <b>126.25</b> (CTAF) <b>343.725</b>	GND CON <b>121.6</b>	UNICOM <b>122.95</b>
----------------------	---	--	-------------------------	-------------------------



ELEV <b>629</b>	<b>D</b>	TDZE <b>629</b>
-----------------	----------	-----------------



CATEGORY	A	B	C	D
S-ILS 32**	829/24 200 (200-1/2)			
S-LOC 32	1120/24 491 (500-1/2)		1120/50 491 (500-1)	
<b>C</b> CIRCLING	1120-1 491 (500-1)	1180-1 551 (600-1)	1200-1 1/2 571 (600-1 1/2)	1200-2 571 (600-2)

EC-1, 08 AUG 2024 to 05 SEP 2024

EC-1, 08 AUG 2024 to 05 SEP 2024