

WAAS CH 69410 W14A	APP CRS 141°	Rwy Idg TDZE Apt Elev	6100 627 629
--	------------------------	-----------------------------	---

RNAV (GPS) RWY 14

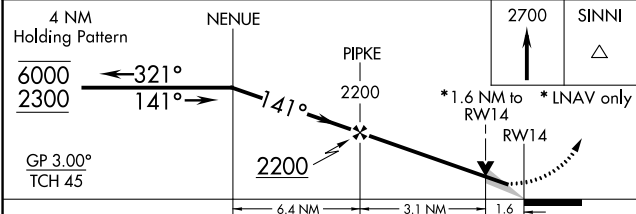
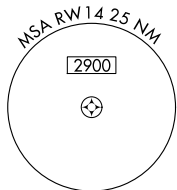
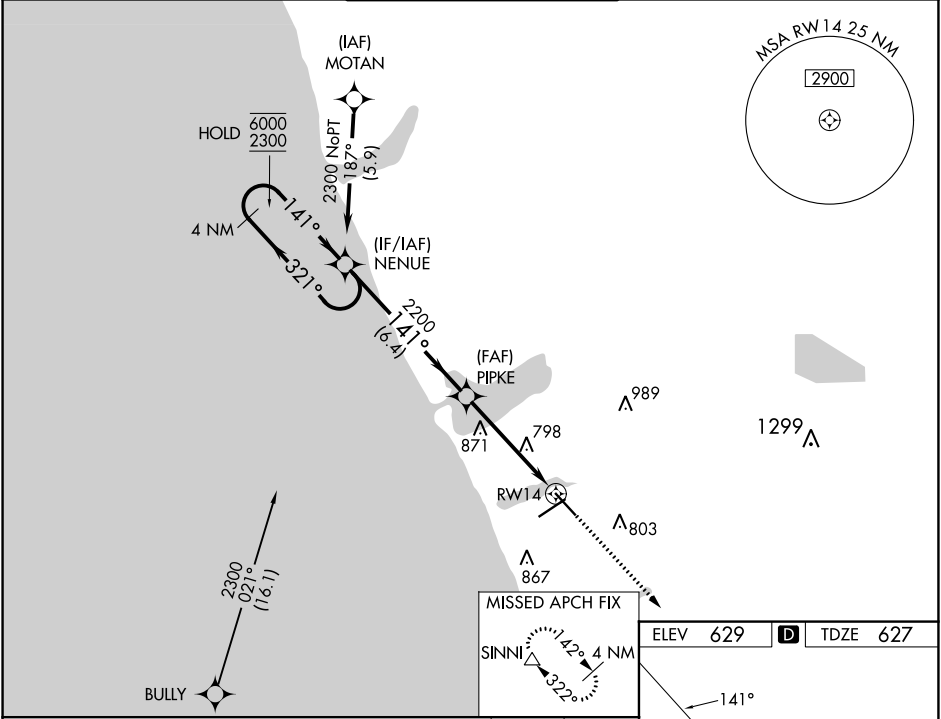
MUSKEGON COUNTY (MKG)

RNP APCH.

▼ For uncompensated Baro-VNAV systems, LNAV/VNAV NA below -18°C or above 54°C.

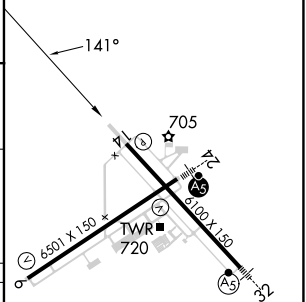
MISSED APPROACH:
Climb to 2700 direct SINNI and hold.

ATIS 124.3	GREAT LAKES APP CON * 119.8 290.35 (North) 133.825 290.35 (South)	MUSKEGON TOWER * 126.25 (CTAF) 0 343.725	GND CON 121.6	UNICOM 122.95
----------------------	---	---	-------------------------	-------------------------



ELEV 629	D	TDZE 627
----------	----------	----------

CATEGORY	A	B	C	D
LPV DA		877- ³ / ₄	250 (300- ³ / ₄)	
LNAV/VNAV DA		1079-1 ¹ / ₂	452 (500-1 ¹ / ₂)	
LNAV MDA	1180-1	553 (600-1)	1180-1 ¹ / ₂ 553 (600-1 ¹ / ₂)	1180-1 ³ / ₄ 553 (600-1 ³ / ₄)
C CIRCLING	1180-1	551 (600-1)	1200-1 ¹ / ₂ 571 (600-1 ¹ / ₂)	1200-2 571 (600-2)



- REIL Rwy 6 **0**
- REIL Rwy 14
- HIRL Rwys 6-24 **0**
- HIRL Rwys 14-32

EC-1, 08 AUG 2024 to 05 SEP 2024

EC-1, 08 AUG 2024 to 05 SEP 2024