

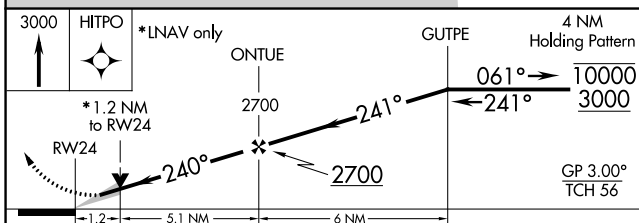
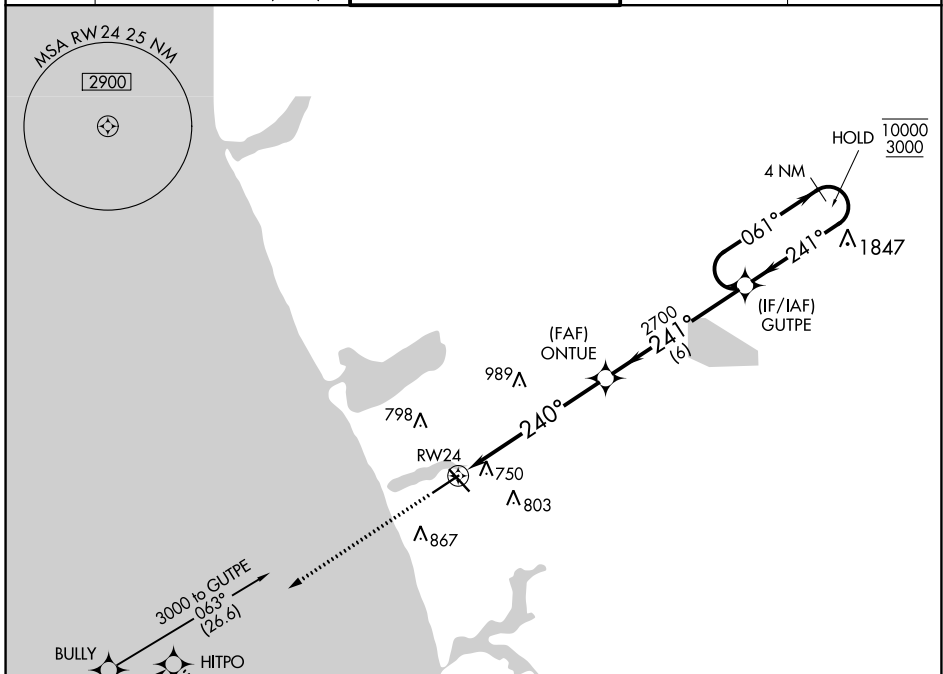
WAAS CH 42918 W24A	APP CRS 240°	Rwy Idg TDZE Apt Elev	6501 627 629
--	------------------------	-----------------------------	---

RNAV (GPS) RWY 24

MUSKEGON COUNTY (MKG)

RNP APCH. ▼ For uncompensated Baro-VNAV systems, LNAV/VNAV NA below -18°C or above 54°C. For inop ALS, increase LPV visibility all Cats to 3/4 SM, LNAV/VNAV visibility all Cats to 1 3/4 SM, LNAV Cats A/B to 1 SM and LNAV Cats C/D to 1 1/2 SM.	MALS AS	MISSED APPROACH: Climb to 3000 direct HITPO and hold.
---	------------	--

ATIS 124.3	GREAT LAKES APP CON* 119.8 290.35 (North) 133.825 290.35 (South)	MUSKEGON TOWER* 126.25 (CTAF) 343.725	GND CON 121.6	UNICOM 122.95
----------------------	--	--	-------------------------	-------------------------



CATEGORY	A	B	C	D
LPV DA		827-1/2	200 (200-1/2)	
LNAV/VNAV DA		1092-1	465 (500-1)	
LNAV MDA	1080-1/2	453 (500-1/2)	1080-7/8	453 (500-7/8)
CIRCLING	1080-1 451 (500-1)	1180-1 551 (600-1)	1200-1 1/2 571 (600-1 1/2)	1200-2 571 (600-2)

