

LOC/DME I-BNA 109.9 Chan 36	APP CRS 021°	Rwy ldg 7702 TDZE 599 Apt Elev 599
---	------------------------	---

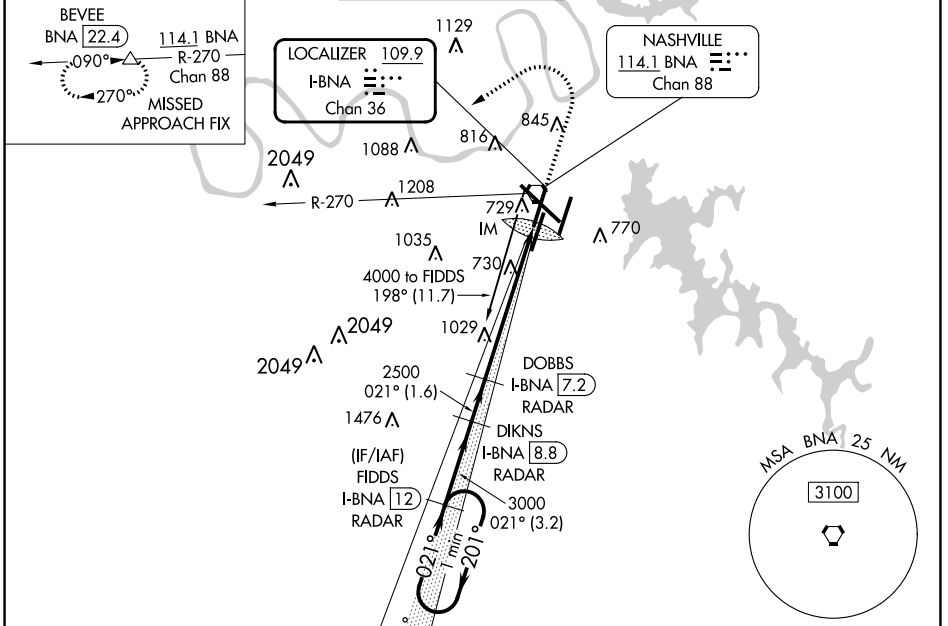
ILS RWY 2L (SA CAT I)

NASHVILLE INTL (BNA)

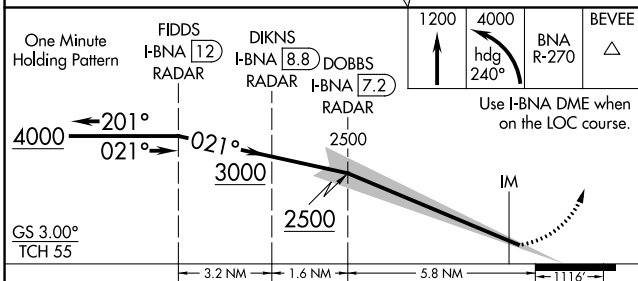
Simultaneous approach authorized with Rwy 2R.
DME or radar required.
 Requires specific OPSPEC, MSPEC, or LOA approval and use of HUD to DH.

ALSIF-2
MISSED APPROACH: Climb to 1200 then climbing left turn to 4000 on heading 240° and on BNA VORTAC R-270 to BEVEE/BNA 22.4 DME and hold.

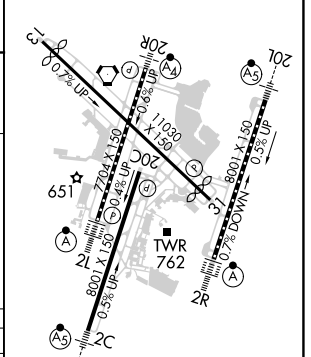
D-ATIS 135.1	NASHVILLE APP CON 118.4 360.7	NASHVILLE TOWER 118.6 257.8	GND CON 121.9 348.6	CLNC DEL 126.05	CPDLC
------------------------	---	---------------------------------------	-------------------------------	---------------------------	-------



DME or RADAR REQUIRED



ELEV 599	D TDZE 599
----------	-------------------



CATEGORY	A	B	C	D
S-ILS 2L	RA 159/14 150 DA 749			

SA CATEGORY I ILS - SPECIAL AIRCREW & AIRCRAFT CERTIFICATION REQUIRED

HIRL all Rwys
 TDZ/CL Rwys 2L and 2R
 REIL Rwys 13, 20C, and 31

SE-1, 08 AUG 2024 to 05 SEP 2024

SE-1, 08 AUG 2024 to 05 SEP 2024