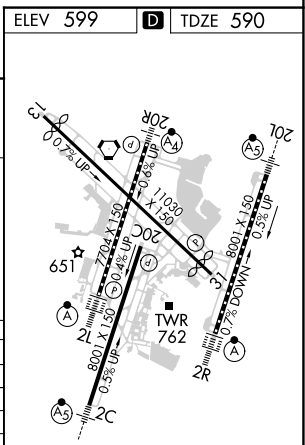
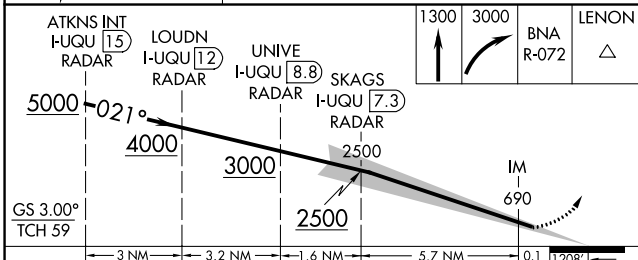
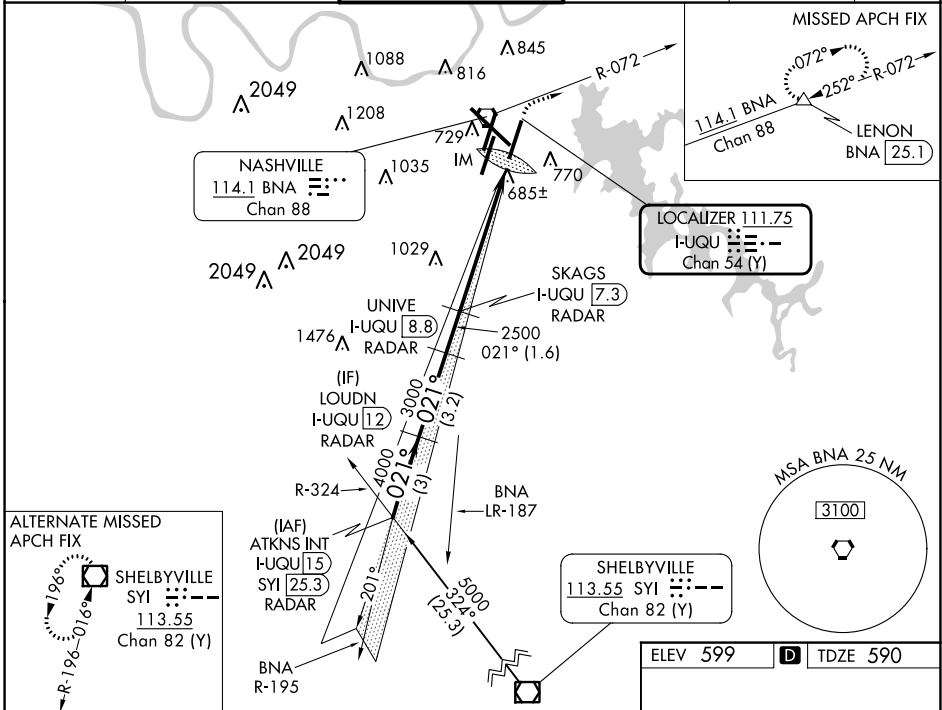


LOC/DME F-UQU <b>111.75</b> Chan <b>54 (Y)</b>	APP CRS <b>021°</b>	Rwy Idg TDZE Apt Elev <b>8000</b> <b>590</b> <b>599</b>
--	------------------------	--

# ILS RWY 2R (CAT II & III)

NASHVILLE INTL (BNA)

DME required.		ALSf-2	MISSED APPROACH: Climb to 1300 then climbing right turn to 3000 on BNA R-072 to LENON/BNA 25.1 DME and hold.		
Simultaneous approach authorized with Rwy 2L/C.					
D-ATIS <b>135.1</b>	NASHVILLE APP CON <b>118.4 360.7</b>	NASHVILLE TOWER <b>118.6 257.8</b>	GND CON <b>121.9 348.6</b>	CLNC DEL <b>126.05</b>	CPDLC



CATEGORY	A	B	C	D
S-ILS 2R	CAT II RA 116/12 100 DA 690			
S-ILS 2R	CAT IIIa RVR 07			
S-ILS 2R	CAT IIIb RVR 06			
S-ILS 2R	CAT IIIc NA			

## CATEGORY II & III ILS - SPECIAL AIRCREW & AIRCRAFT CERTIFICATION REQUIRED

HIRL all Rwys  
TDZ/CL Rwys 2L and 2R  
REIL Rwys 13, 20C, and 31

SE-1, 08 AUG 2024 to 05 SEP 2024

SE-1, 08 AUG 2024 to 05 SEP 2024