

LOC I-VIIY <b>111.3</b>	APP CRS <b>201°</b>	Rwy Idg	20R	20C
		TDZE	<b>7702</b>	<b>8001</b>
		Apt Elev	<b>578</b>	<b>588</b>

# ILS or LOC RWY 20R

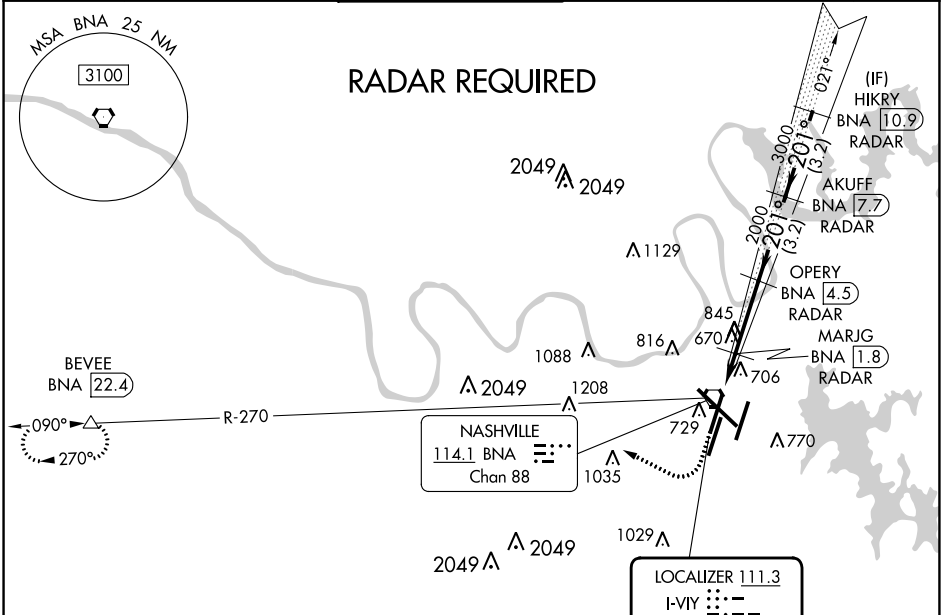
NASHVILLE INTL (BNA)

**⚠** Simultaneous approach authorized with Rwy 20L. DME or radar required. For inop ALS, increase S-LOC 20R Cat D visibility to 1 1/4 SM. DME from BNA VORTAC. Simultaneous reception of I-VIIY and BNA DME required.

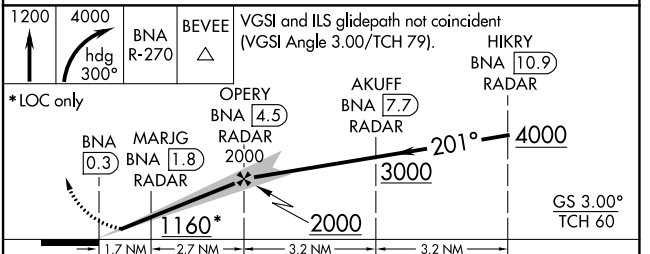
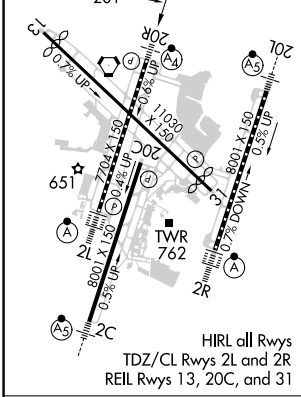
**MALSF** 

**MISSED APPROACH:** Climb to 1200 then climbing right turn to 4000 on heading 300° and on BNA VORTAC R-270 to BEVEE/BNA 22.4 DME and hold.

D-ATIS <b>135.1</b>	NASHVILLE APP CON <b>118.4 360.7</b>	NASHVILLE TOWER <b>118.6 257.8</b>	GND CON <b>121.9 348.6</b>	CLNC DEL <b>126.05</b>	CPDLC
------------------------	---	---------------------------------------	-------------------------------	---------------------------	-------



ELEV 599	<b>D</b>	TDZE 20C 588
		TDZE 20R 578



CATEGORY	A	B	C	D
S-ILS 20R	778/40 200 (200-3/4)			
S-LOC 20R	1000/40	422 (500-3/4)	1000/50	422 (500-1)
SIDESTEP 20C	1000-1	412 (500-1)	1000-1 1/2 412 (500-1 1/2)	1000-2 412 (500-2)
<b>C</b> CIRCLING	1100-1 501 (600-1)	1120-1 521 (600-1)	1200-1 3/4 601 (700-1 3/4)	1380-2 1/2 781 (800-2 1/2)

SE-1, 08 AUG 2024 to 05 SEP 2024

SE-1, 08 AUG 2024 to 05 SEP 2024