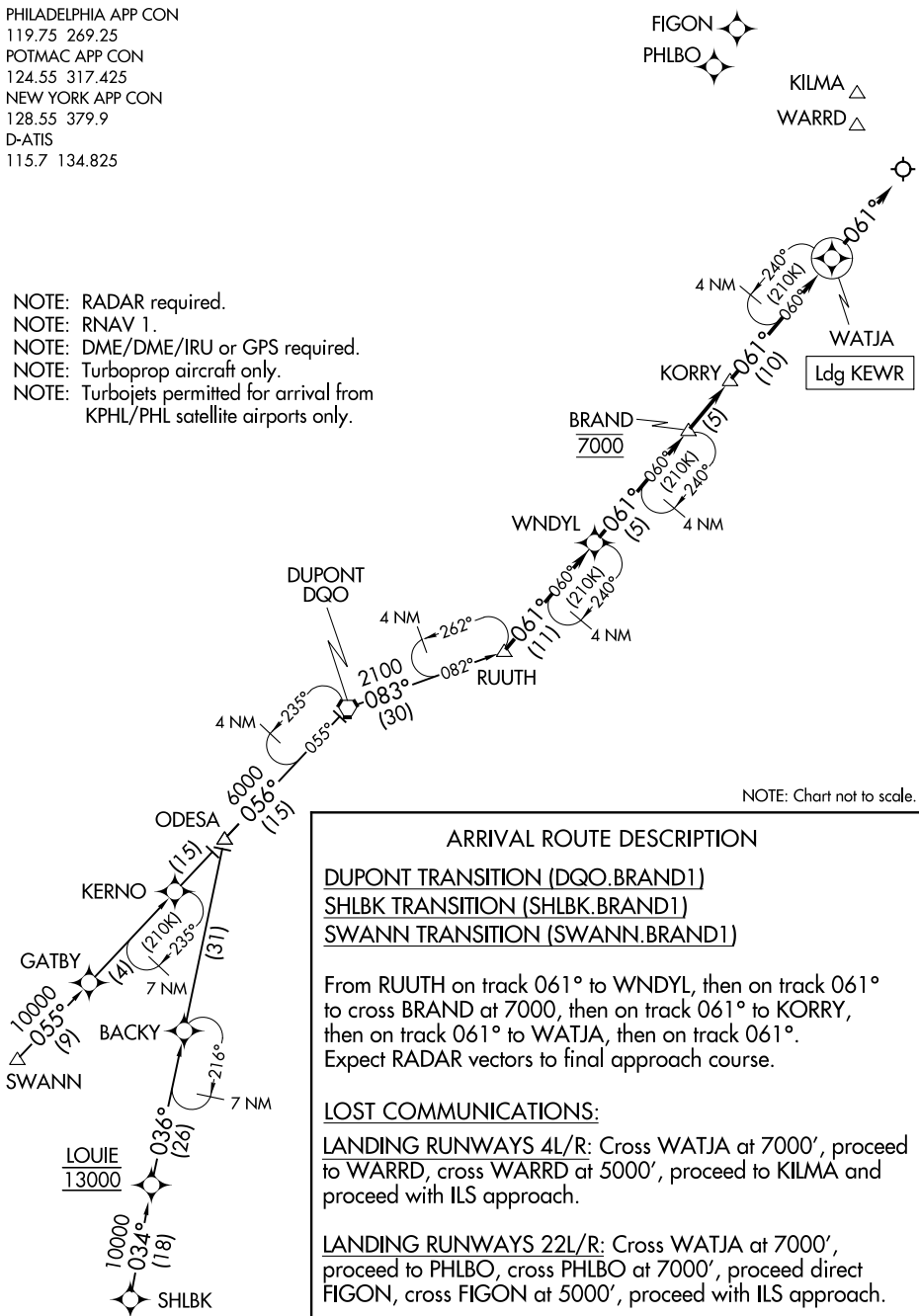


# BRAND ONE ARRIVAL (RNAV)

PHILADELPHIA APP CON  
 119.75 269.25  
 POTMAC APP CON  
 124.55 317.425  
 NEW YORK APP CON  
 128.55 379.9  
 D-ATIS  
 115.7 134.825

- NOTE: RADAR required.
- NOTE: RNAV 1.
- NOTE: DME/DME/IRU or GPS required.
- NOTE: Turboprop aircraft only.
- NOTE: Turbojets permitted for arrival from KPHL/PHL satellite airports only.



NOTE: Chart not to scale.

**ARRIVAL ROUTE DESCRIPTION**

DUPONT TRANSITION (DQO.BRAND1)  
SHLBK TRANSITION (SHLBK.BRAND1)  
SWANN TRANSITION (SWANN.BRAND1)

From RUUTH on track 061° to WNDYL, then on track 061° to cross BRAND at 7000, then on track 061° to KORRY, then on track 061° to WATJA, then on track 061°.  
 Expect RADAR vectors to final approach course.

**LOST COMMUNICATIONS:**

**LANDING RUNWAYS 4L/R:** Cross WATJA at 7000', proceed to WARRD, cross WARRD at 5000', proceed to KILMA and proceed with ILS approach.

**LANDING RUNWAYS 22L/R:** Cross WATJA at 7000', proceed to PHLBO, cross PHLBO at 7000', proceed direct FIGON, cross FIGON at 5000', proceed with ILS approach.

# BRAND ONE ARRIVAL (RNAV)

NE-2, 08 AUG 2024 to 05 SEP 2024

NE-2, 08 AUG 2024 to 05 SEP 2024