

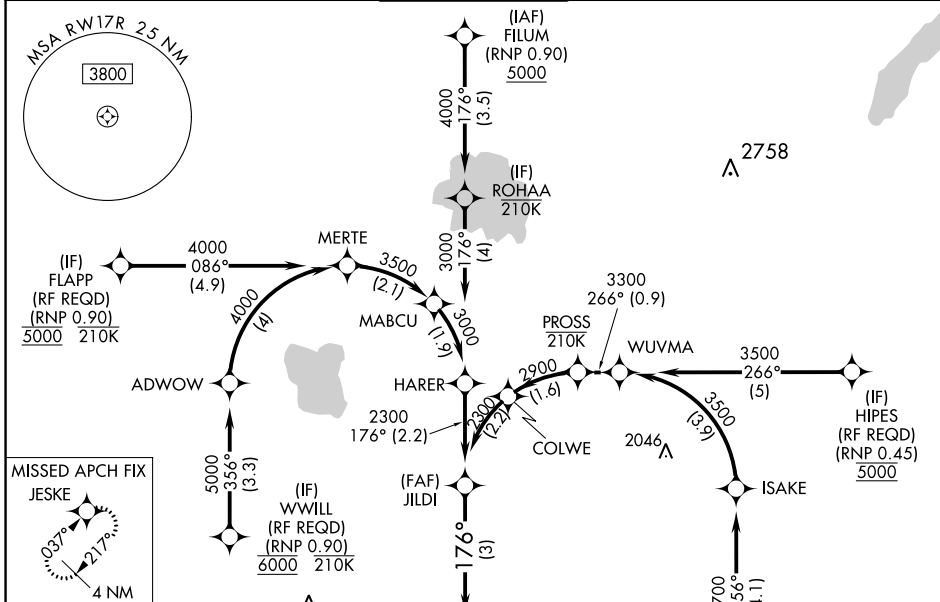
APP CRS	Rwy Idg	9800
176°	TDZE	1282
	Apt Elev	1296

RNAV (RNP) Z RWY 17R

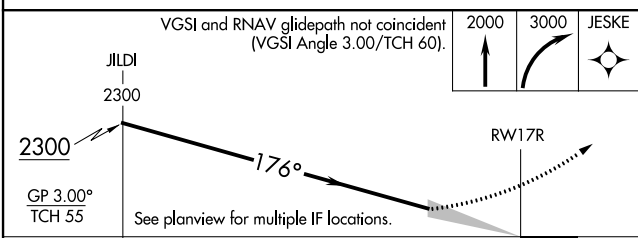
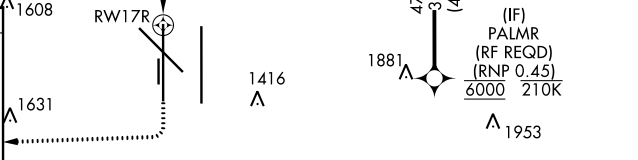
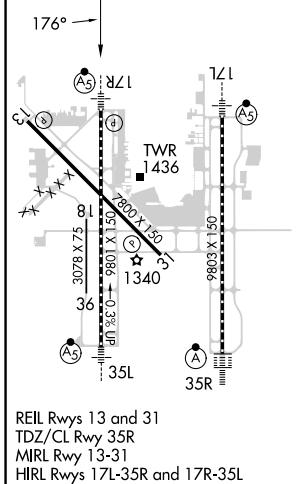
WILL ROGERS WORLD (OKC)

RNP AR APCH.		MALSR	MISSED APPROACH: Climb to 2000 then climbing right turn to 3000 direct JESKE and hold.
<p>▼ For uncompensated Baro-VNAV systems, procedure NA below -13°C or above 54°C.</p> <p>ASR For inop ALS, increase RNP 0.20 all Cats visibility to RVR 4500 and RNP 0.30 all Cats visibility to RVR 6000. Simultaneous approach authorized. Use of FD or AP required during simultaneous operations.</p>			

D-ATIS	OKE CITY APP CON	ROGERS TOWER	GND CON	CLNC DEL
125.85	124.6 266.8	119.35 269.45	121.9 348.6	124.35



ELEV 1296	D	TDZE 1282
-----------	----------	-----------



CATEGORY	A	B	C	D
RNP 0.20 DA		1559/24	277 (300-½)	
RNP 0.30 DA		1677/35	395 (400-⅝)	

AUTHORIZATION REQUIRED

SC-1, 08 AUG 2024 to 05 SEP 2024

SC-1, 08 AUG 2024 to 05 SEP 2024