

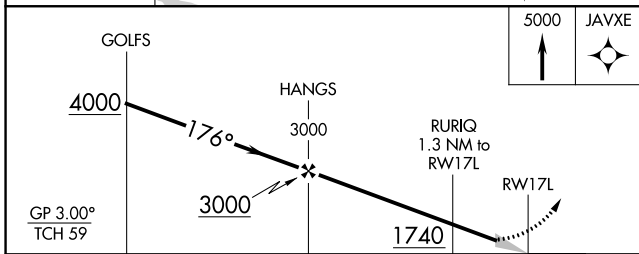
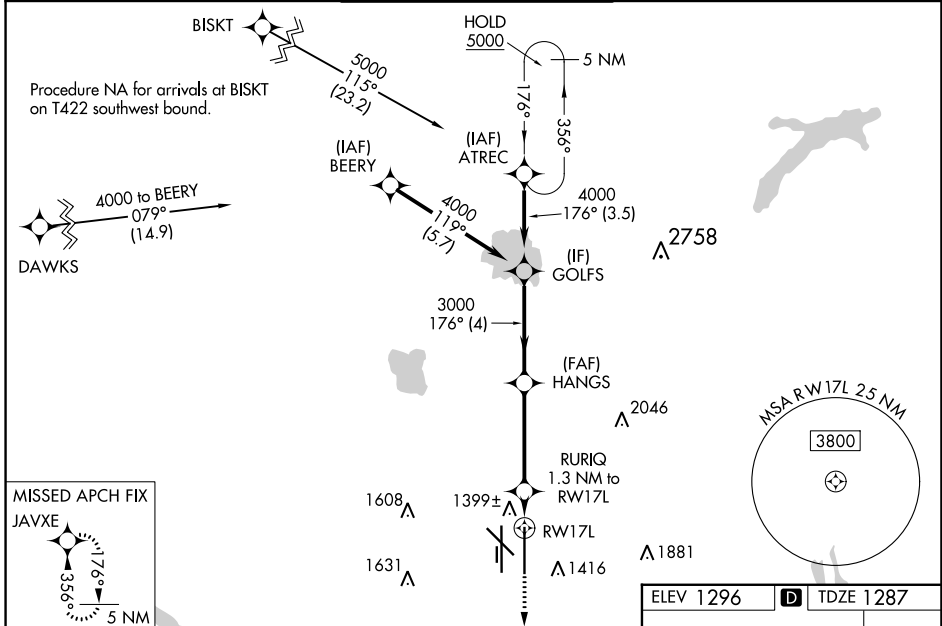
WAAS CH 56503 W17B	APP CRS 176°	Rwy Idg 9802 TDZE 1287 Apt Elev 1296
--	------------------------	---

RNAV (GPS) Y RWY 17L

WILL ROGERS WORLD (OKC)

RNP APCH-GPS.	MALSR	MISSED APPROACH: Climb to 5000 direct JAVXE and hold, continue climb-in-hold to 5000.
<p>Simultaneous approach authorized. LNAV procedure NA during simultaneous operations. Use of FD or AP required during simultaneous operations. For uncompensated Baro-VNAV systems, LNAV/VNAV NA below -12°C or above 54°C. For inop ALS, increase LPV Cat E visibility to RVR 4000, LNAV/VNAV Cat E visibility to RVR 4500, and LNAV all Cats visibility to RVR 5500.</p> <p>* RVR 1800 authorized with use of FD or AP or HUD to DA.</p>		

D-ATIS 125.85	OKE CITY APP CON 124.6 266.8	ROGERS TOWER 119.35 269.45	GND CON 121.9 348.6	CLNC DEL 124.35
-------------------------	--	--------------------------------------	-------------------------------	---------------------------



ELEV 1296	D TDZE 1287
REIL Rwy 13 and 31 TDZ/CL Rwy 35R MRL Rwy 13-31 HIRL Rwy 17L-35R and 17R-35L	

SC-1, 08 AUG 2024 to 05 SEP 2024

SC-1, 08 AUG 2024 to 05 SEP 2024