

# HI-TACAN RWY 25

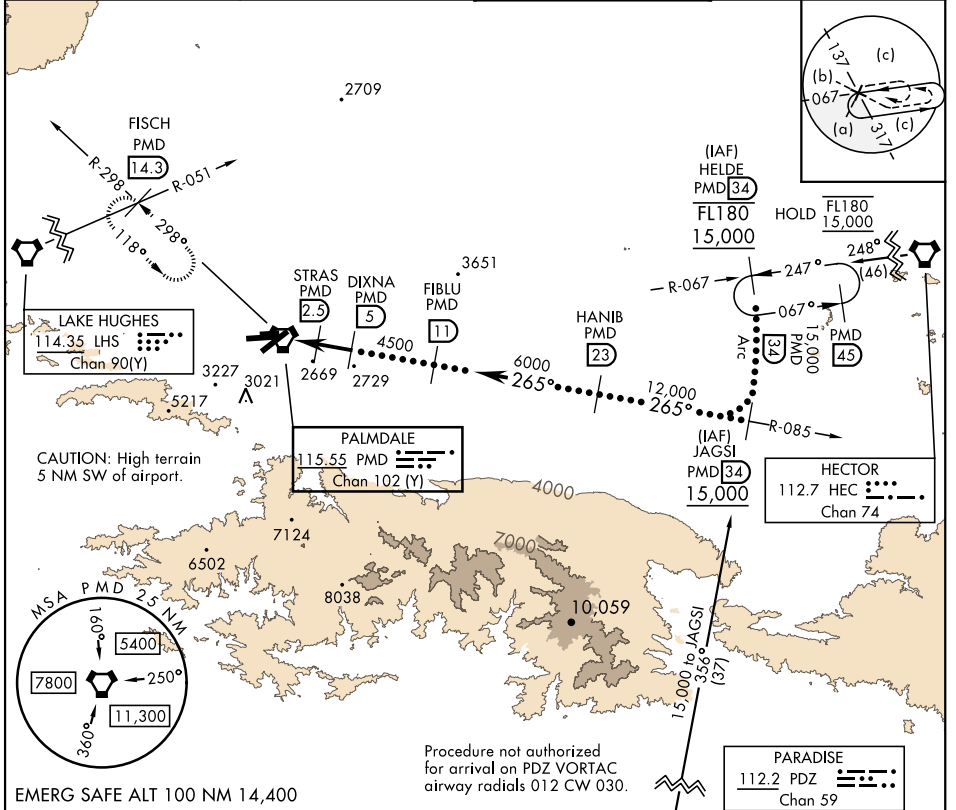
TACAN PMD Chan <b>102 (Y)</b>	APCH CRS <b>265°</b>	Rwy Idg <b>12,002</b> TDZE <b>2503</b> Arprt Elev <b>2543</b>
----------------------------------	-------------------------	---

AL-310 [USAF]

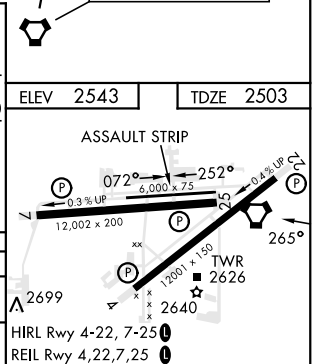
PALMDALE USAF PLANT 42 (KPMDD)

**▽** \* Circling NA S of Rwy 4 and 25.  
**▲** MISSED APPROACH: Climb to 3000 then climbing right turn to 6700 on heading 318° on PMD VORTAC R-298 to FISCH INT/PMD 14.3 DME/RADAR and hold, continue climb-in-hold to 6700.

ATIS <b>118.275</b>	JOSHUA APP CON <b>124.55 363.0</b>	TOWER★ <b>123.7 (CTAF) 0 317.6</b>	GND CON <b>121.9 317.6</b>
------------------------	---------------------------------------	---------------------------------------	-------------------------------



3000	6700	VGS1 and descent angles not coincident.	
↑		Hdg 318°	
VORTAC	STRAS 2.9	DIXNA 5	HANIB 23
EKOTY 0.3	3500	4500	6000
0.8	2.2 NM	2.5 NM	
CATEGORY	C	D	E
S-25	2840-1	337 (400-1)	
CIRCLING*	3140-1½ 597 (600-1½)	3740-3 1197 (1200-3)	3760-3 1217 (1300-3)



# HI-TACAN RWY 25

SW-3, 08 AUG 2024 to 05 SEP 2024

SW-3, 08 AUG 2024 to 05 SEP 2024