

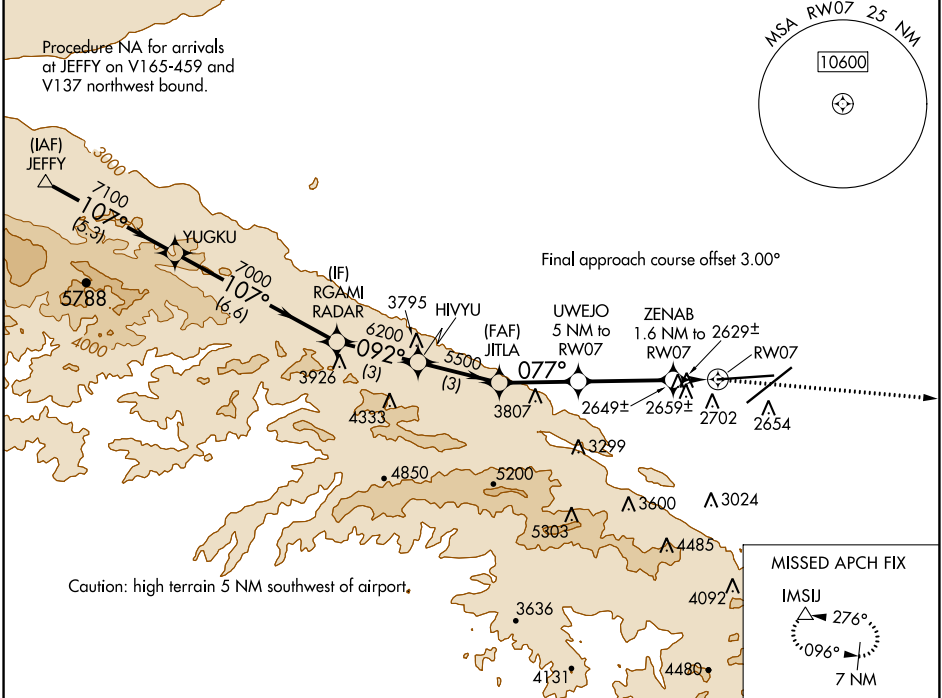
WAAS CH 53441 W07A	APP CRS 077°	Rwy ldg 12002 TDZE 2540 Apt Elev 2543
--	------------------------	--

RNAV (GPS) RWY 7

PALMDALE USAF PLANT 42 (PMD)

RNP APCH.	MISSED APPROACH: Climbing right turn to 7000 direct IMSJ and hold.
<p>Circling NA for Cats C and D south of Rws 4 and 25.</p>	

ATIS 118.275	JOSHUA APP CON 124.55 363.0	PALMDALE TOWER * 123.7 (CTAF) 0 317.6	GND CON 121.9 317.6
------------------------	---------------------------------------	---	-------------------------------



SW-3, 08 AUG 2024 to 05 SEP 2024

SW-3, 08 AUG 2024 to 05 SEP 2024

	ELEV 2543	TDZE 2540					
JEFFY	YUGKU	RGAMI	HIVYU	JITLA	UWEJO	ZENAB	IMSJ
8000	7100	7000	6200	5500	4440	3180	7000
VGSIs and descent angles not coincident (VGSi Angle 3.00/TCH 78).							
CATEGORY	A	B	C	D			
LP MDA	2880-1 340 (400-1)						
LNAV MDA	2920-1 380 (400-1)						
CIRCLING	3020-1 477 (500-1)	3060-1 517 (600-1)	3140-1½ 597 (600-1½)	3740-3 1197 (1200-3)			
REIL Rws 4, 7, 22 and 25 HIRL Rws 4-22 and 7-25							