

# HI-TACAN Y RWY 14L

TACAN PAM Chan <b>64</b>	APCH CRS <b>130°</b>	Rwy ldg <b>10,008</b> TDZE <b>14</b> Arpt Elev <b>17</b>
-----------------------------	-------------------------	--

[USAF]

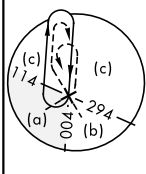
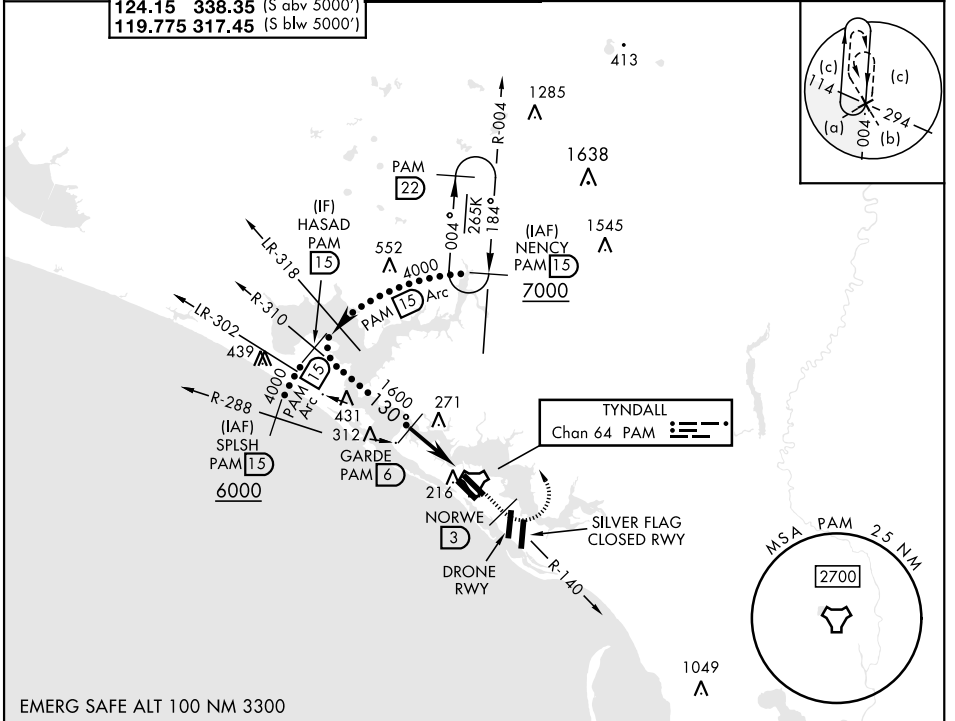
TYNDALL AFB (KPAM)

▼ \* When ALS inop, increase vis to 1½ miles.
 

 ALSF-1  



 MISSED APPROACH: Track outbound PAM TACAN R-140 to 3 DME (NORWE), then turn left to join PAM R-004 to 15 DME (NENCY) and hold. Maintain 3000.

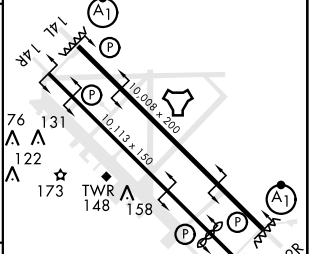
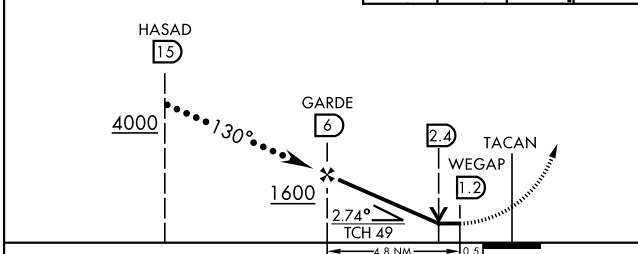
ATIS ★ <b>254.4</b>	APP CON <b>125.2 392.1</b> (N abv 5000') <b>120.825 379.3</b> (N blw 5000') <b>124.15 338.35</b> (S abv 5000') <b>119.775 317.45</b> (S blw 5000')	TOWER ★ <b>133.95 263.15</b>	GND CON <b>121.9 259.3</b>	CLNC DEL <b>118.05 348.7</b>	ASR/PAR
------------------------	--	---------------------------------	-------------------------------	---------------------------------	---------



SE-3, 08 AUG 2024 to 05 SEP 2024

SE-3, 08 AUG 2024 to 05 SEP 2024

VGS1 and descent angles not coincident (VGS1 Angle 2.50/TCH 49). 	3000 PAM R-140 NORWE PAM 3 NENCY PAM 15 PAM R-004	ELEV 17 TDZE 14 HIRL all Rwys Rwy 32L ldg 9135'
---	--	---



CATEGORY	C	D	E
S-14L*	500/50	486	(500-1)
CIRCLING	540-1½ 523 (600-1½)	580-2 563 (600-2)	620-2¼ 603 (700-2¼)

Recommend Rwy 14L-32R for apch end engagement of A-Gear.

# HI-TACAN Y RWY 14L