

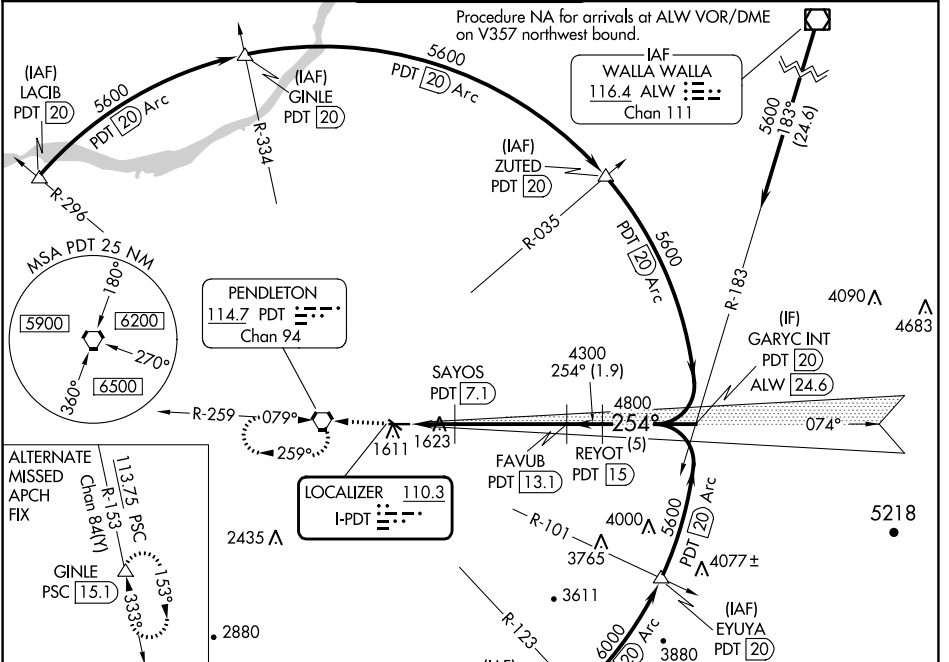
LOC I-PDT <b>110.3</b>	APP CRS <b>254°</b>	Rwy Idg 6301	TDZE 1487
		Apt Elev 1497	

# ILS or LOC RWY 26

EASTERN OREGON RGNL AT PENDELTON (PDT)

DME required.	MALSR	MISSED APPROACH: Climb to 4200 direct PDT VORTAC and hold, continue climb-in-hold to 4200.
DME from PDT VORTAC. Simultaneous reception of I-PDT and PDT DME required. *RVR 1800 authorized with use of FD or AP or HUD to DA.		

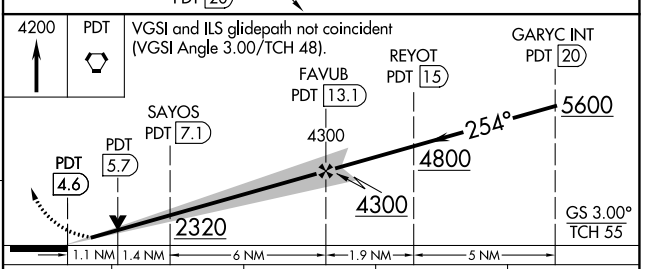
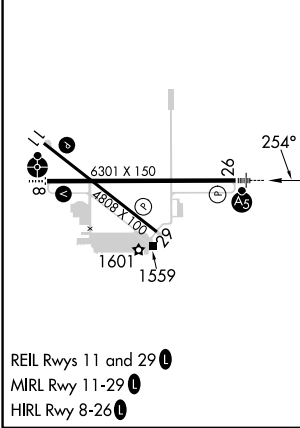
ASOS <b>118.325</b>	SPOKANE APP CON * <b>133.15 379.15</b>	PENDELTON TOWER * <b>119.7 (CTAF) 257.8</b>	GND CON <b>121.9 257.8</b>	UNICOM <b>122.95</b>
------------------------	---	--	-------------------------------	-------------------------



NW-1, 08 AUG 2024 to 05 SEP 2024

NW-1, 08 AUG 2024 to 05 SEP 2024

ELEV 1497	<b>D</b>	TDZE 1487
-----------	----------	-----------



CATEGORY	A	B	C	D
S-ILS 26*	1687/24 200 (200-½)			
S-LOC 26	1880/24	393 (400-½)	1880/40	393 (400-¾)
<b>C</b> CIRCLING	1920-1 423 (500-1)	1960-1 463 (500-1)	1980-1½ 483 (500-1½)	2200-2¼ 703 (800-2¼)