

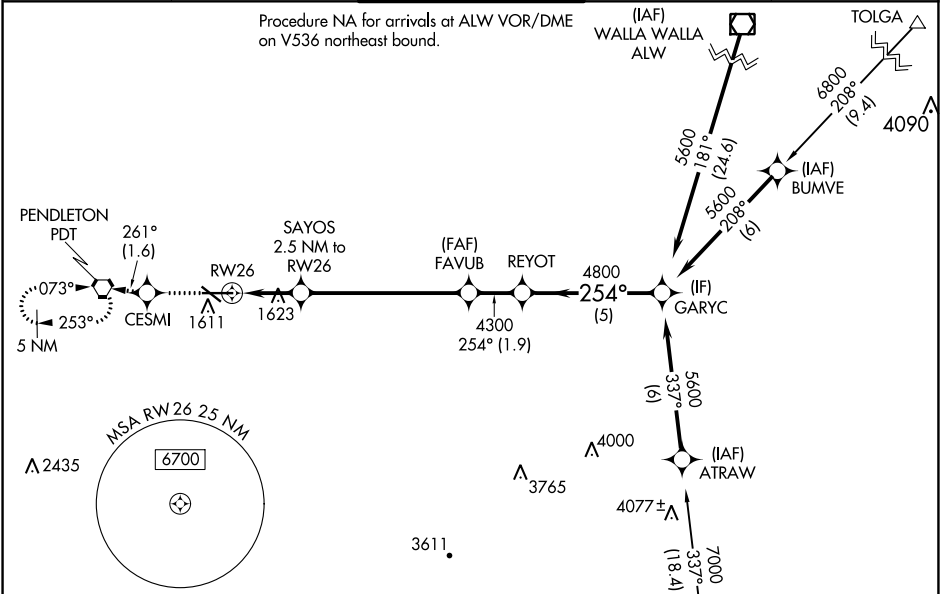
WAAS CH 78412 W26A	APP CRS 254°	Rwy Idg TDZE Apt Elev	6301 1487 1497
---------------------------------	------------------------	-----------------------------	---

RNAV (GPS) RWY 26

EASTERN OREGON RGNL AT PENDLETON (PDT)

RNP APCH.	<p>⚠ Circling Rwy 11 NA at night. For uncompensated Baro-VNAV systems, LNAV/VNAV NA below -17°C or above 54°C. For inop ALS, increase LNAV/VNAV all Cats visibility to RVR 4500. #RVR 1800 authorized with the use of FD or AP or HUD to DA.</p>	MALSRL 	MISSED APPROACH: Climb to 4300 direct CESMI and on track 261° to PDT VORTAC and hold, continue climb-in-hold to 4300.
-----------	---	------------	---

ASOS 118.325	SPOKANE APP CON * 133.15 379.15	PENDLETON TOWER * 119.7 (CTAF) 257.8	GND CON 121.9 257.8	UNICOM 122.95
------------------------	---	--	-------------------------------	-------------------------



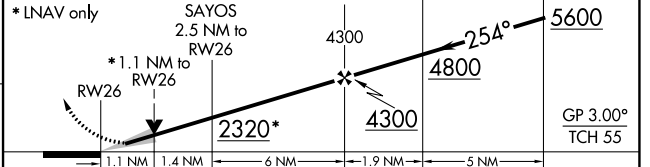
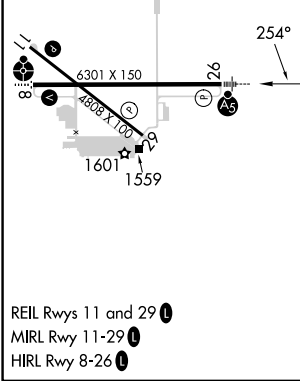
NW-1, 08 AUG 2024 to 05 SEP 2024

NW-1, 08 AUG 2024 to 05 SEP 2024

ELEV 1497	D TDZE 1487
-----------	--------------------

Procedure NA for arrivals at LACED on V4 southeast bound.

4300 CESMI	Ir 261°	PDT	VGSI and RNAV glidepath not coincident (VGSI Angle 3.00/TCH 48).
------------	---------	-----	--



CATEGORY	A	B	C	D
LPV DA#	1687/24 200 (200-½)			
LNAV/VNAV DA	1800/24 313 (400-½)			
LNAV MDA	1880/24 393 (400-½)	1880/40 393 (400-¾)		
C CIRCLING	1920-1 423 (500-1)	1960-1 463 (500-1)	1980-1½ 483 (500-1½)	2200-2¼ 703 (800-2¼)