

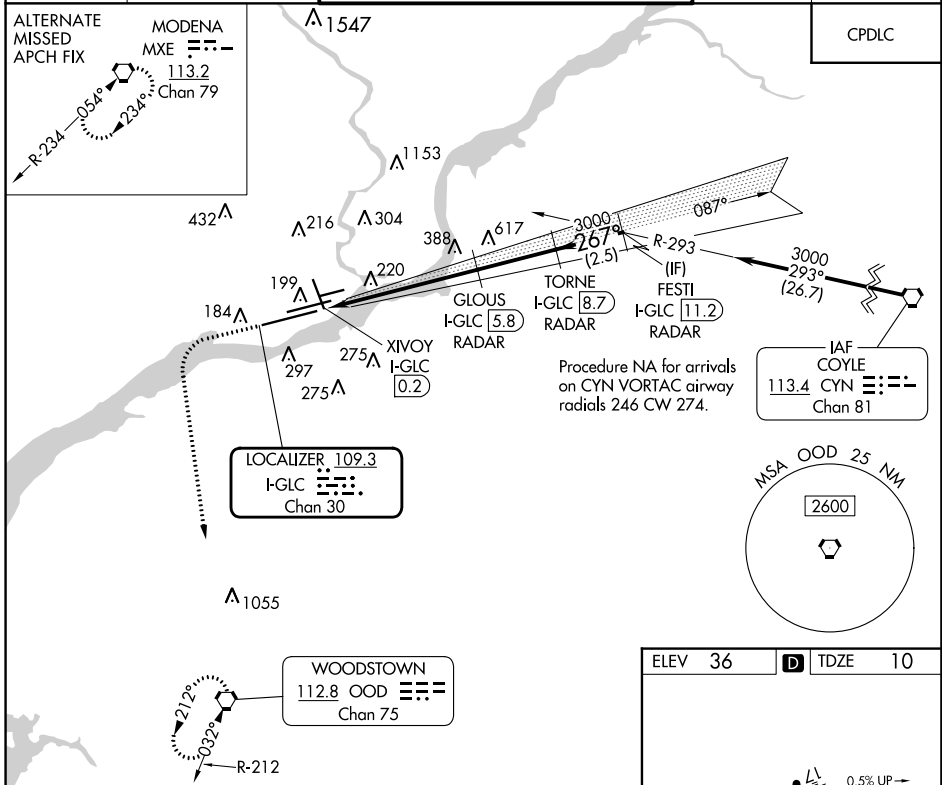
LOC/DME I-GLC 109.3 Chan 30	APP CRS 267°	Rwy Idg TDZE Apt Elev 9912 10 36
--	------------------------	--

ILS or LOC RWY 27L

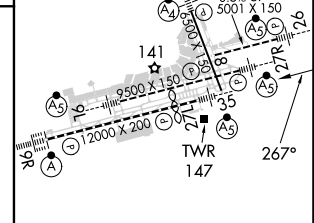
PHILADELPHIA INTL (PHL)

DME or RADAR required.	MALSR	MISSED APPROACH: Climb to 1500 then climbing left turn to 3000 direct OOD VORTAC and hold.
------------------------	-------	--

D-ATIS ARR 133.4 DEP 135.925	PHILADELPHIA APP CON 124.35 319.15	PHILADELPHIA TOWER 118.5 327.05 (Rwys 9L/27R, 8/26 and 17/35) 135.1 327.05 (Rwy 9R/27L)	GND CON 121.9 348.6	CLNC DEL 118.85 348.6
--	--	---	-------------------------------	---------------------------------



1500	3000	OOD	VGSI and ILS glidepath not coincident (VGSI Angle 3.00°/TCH 73).	TORNE I-GLC [8.7] RADAR	FESTI I-GLC [11.2] RADAR
I-GLC	DME ANTENNA	XIVOY I-GLC [0.2]	GLOUS I-GLC [5.8] RADAR	3000	GS 3.00° TCH 57
0.7	0.8	4.8 NM	2.9 NM	2.5 NM	



ELEV 36	D TDZE 10
TDZ/CL Rwy 9R	HIRL all Rwys
REIL Rwys 9L and 35	FAF to MAP 8.5 NM
Knots	60 90 120 150 180
Min:Sec	8:30 5:40 4:15 3:24 2:50

NE-4, 08 AUG 2024 to 05 SEP 2024

NE-4, 08 AUG 2024 to 05 SEP 2024