

ILS or LOC RWY 27R

PHILADELPHIA INTL (PHL)

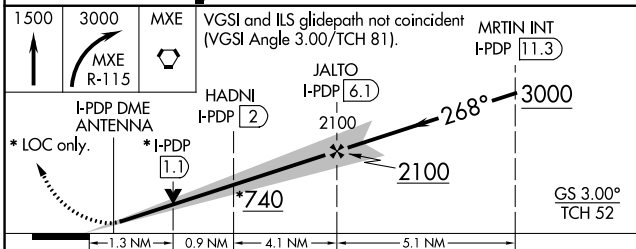
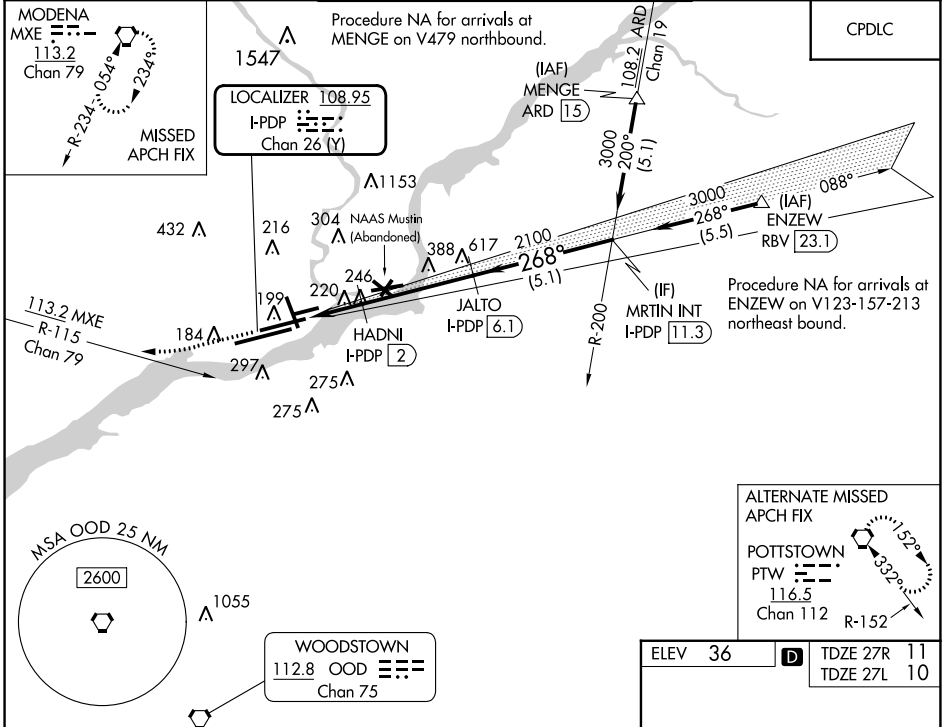
LOC/DME I-PDP 108.95 Chan 26 (Y)	APP CRS 268°	Rwy Idg 27R 27L	TDZE 8864 11 10	9912 36 36
---	------------------------	-----------------------	---	--------------------------------

DME required.

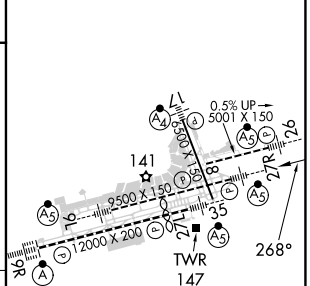
▼ For inop ALS, increase S-LOC 27R Cat C/D visibility to 1 3/8 SM.
 ▲ **RVR 1800 authorized with the use of FD or AP or HUD to DA.

27R MALS AS	27L MALS AS	MISSED APPROACH: Climb to 1500 then climbing right turn to 3000 on MXE VORTAC R-115 to MXE VORTAC and hold.
----------------	----------------	--

D-ATIS ARR 133.4 DEP 135.925	PHILADELPHIA APP CON 124.35 319.15	PHILADELPHIA TOWER 118.5 327.05 (Rwys 9L/27R, 8/26 and 17/35) 135.1 327.05 (Rwy 9R/27L)	GND CON 121.9 348.6	CLNC DEL 118.85 348.6
--	--	---	-------------------------------	---------------------------------



ELEV 36	TDZE 27R 11
	TDZE 27L 10



CATEGORY	A	B	C	D
S-ILS 27R **	211/24 200 (200-1/2)			
S-LOC 27R	500/24	489 (500-1/2)	500/50	489 (500-1)
SIDESTEP 27L	500-1	491 (500-1)	500-1 3/8	491 (500-1 3/8)
CIRCLING	540-1 504 (600-1)	600-1 564 (600-1)	620-1 1/2 584 (600-1 1/2)	720-2 1/4 684 (700-2 1/4)

TDZ/CL Rwy 9R
HIRL all Rwys
REIL Rwys 9L and 35

NE-4, 08 AUG 2024 to 05 SEP 2024

NE-4, 08 AUG 2024 to 05 SEP 2024