

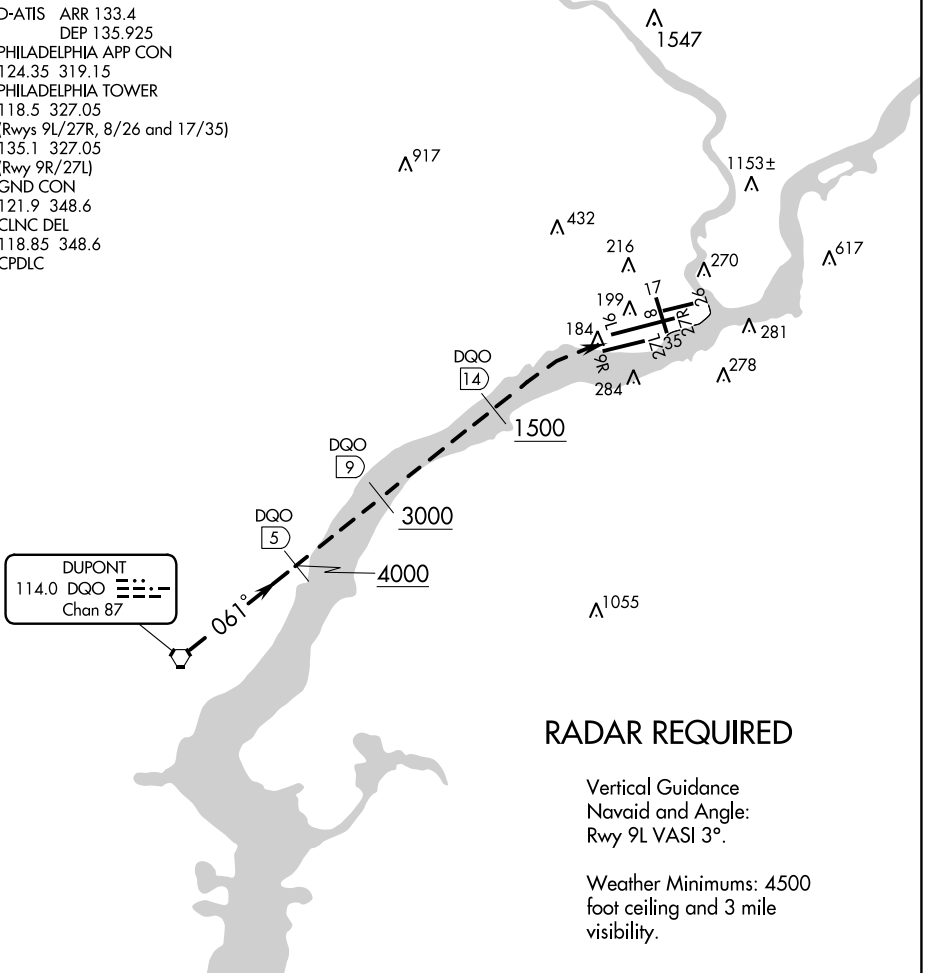
19227

# RIVER VISUAL RWY 9L/R

AL-320 (FAA)

PHILADELPHIA INTL (PHL)  
PHILADELPHIA, PENNSYLVANIA

D-ATIS ARR 133.4  
 DEP 135.925  
 PHILADELPHIA APP CON  
 124.35 319.15  
 PHILADELPHIA TOWER  
 118.5 327.05  
 (Rwys 9L/27R, 8/26 and 17/35)  
 135.1 327.05  
 (Rwy 9R/27L)  
 GND CON  
 121.9 348.6  
 CLNC DEL  
 118.85 348.6  
 CPDLC



## RADAR REQUIRED

Vertical Guidance  
 Navaid and Angle:  
 Rwy 9L VASI 3°.

Weather Minimums: 4500  
 foot ceiling and 3 mile  
 visibility.

NE-4, 08 AUG 2024 to 05 SEP 2024

NE-4, 08 AUG 2024 to 05 SEP 2024

1	2	3	4	5	6	7	8	9	10	11	12	13	14	15	16	17	18	19	20	21	22	23	24	25	26	27	28	29	30	31	32
---	---	---	---	---	---	---	---	---	----	----	----	----	----	----	----	----	----	----	----	----	----	----	----	----	----	----	----	----	----	----	----

### RIVER VISUAL RWY 9L/R

Expect RADAR vectors to the DQO R-061.  
 Aircraft may proceed to the DQO R-061/5.0 DME, then descend  
 from 4000 feet over the Delaware River and follow the river to  
 the airport.

# RIVER VISUAL RWY 9L/R

39°52'N-75°14'W

PHILADELPHIA, PENNSYLVANIA  
PHILADELPHIA INTL (PHL)

Orig 05MAR92