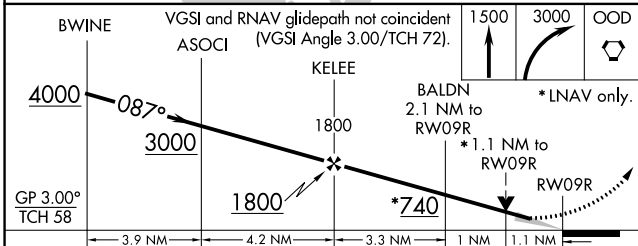
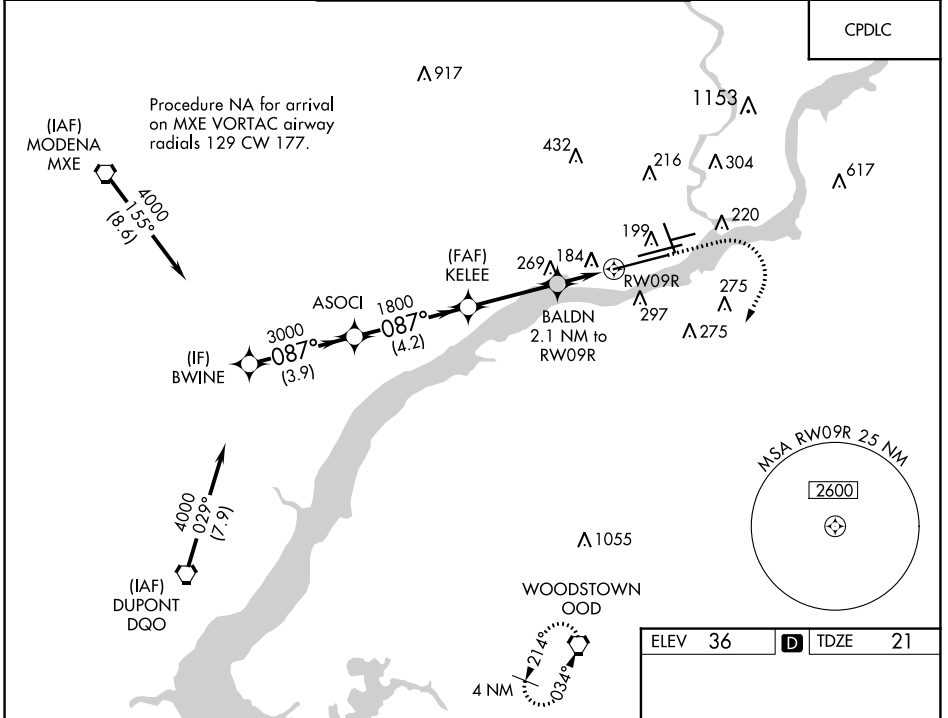


WAAS CH <b>40023</b> <b>W09A</b>	APP CRS <b>087°</b>	Rwy Idg TDZE <b>21</b> Apt Elev <b>36</b>	<b>12000</b>
--	------------------------	---	--------------

# RNAV (GPS) Y RWY 9R

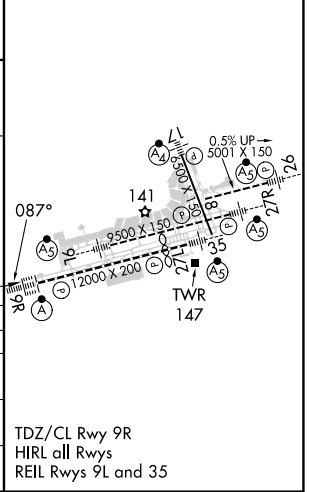
PHILADELPHIA INTL (PHL)

<p>▼ For uncompensated Baro-VNAV systems, LNAV/VNAV NA below -12°C (11°F) or above 54°C (130°F). DME/DME RNP-0.3 NA. ▲ For inop ALS, increase LNAV/VNAV visibility all Cats to RVR 5000 and LNAV Cats C/D visibility to RVR 6000.</p>	<p>ALSF-2</p>	<p>MISSED APPROACH: Climb to 1500 then climbing right turn to 3000 direct OOD VORTAC and hold.</p>		
			<p>D-ATIS ARR <b>133.4</b> DEP <b>135.925</b></p>	<p>PHILADELPHIA APP CON <b>124.35 319.15</b></p>



ELEV 36	<b>D</b> TDZE 21
---------	------------------

CATEGORY	A	B	C	D
LPV DA		221/18	200 (200-½)	
LNAV/VNAV DA		346/30	325 (400-¾)	
LNAV MDA	440/24	419 (500-½)	440/40	419 (500-¾)
<b>C</b> CIRCLING	540-1	640-1	640-1¾	720-2¼
	504 (600-1)	604 (700-1)	604 (700-1¾)	684 (700-2¼)



NE-4, 08 AUG 2024 to 05 SEP 2024

NE-4, 08 AUG 2024 to 05 SEP 2024