

HI-TACAN Y RWY 30

TACAN MUO Chan 87	APCH CRS 295°	Rwy ldg 13,510 TDZE 2996 Arprt Elev 2996
--------------------------	----------------------	---

[USAF]

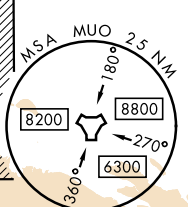
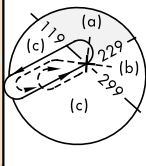
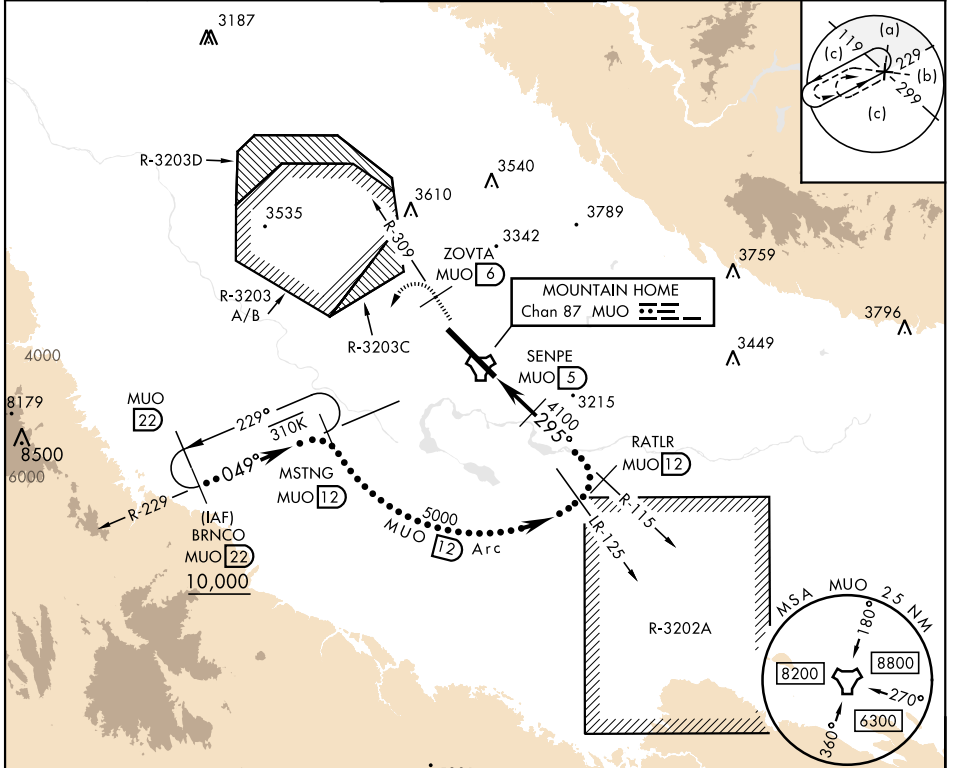
MOUNTAIN HOME AFB (KMUO)

▼ * When ALS inop, increase CAT CDE vis to 1 3/8 miles.
 ** Circling NA NE of Rwy 12-30.



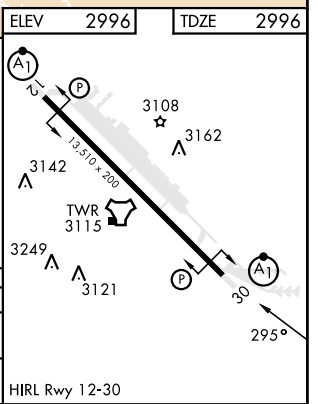
MISSED APPROACH: Climb to 10,000 via MUO R-309 to ZOVTA/6 DME, turn left and intercept MUO R-229 to MSTNG/12 DME and hold. Continue climb in hold to 10,000.

ATIS 273.5	MOUNTAIN HOME APP CON 124.8 259.1	MOUNTAIN HOME TOWER 133.85 253.5	GND CON 120.5 275.8	CLNC DEL 127.1 290.425
-------------------	--	---	----------------------------	-------------------------------



EMERG SAFE ALT 100 NM 14,200

10,000	ZOVTA MUO R-309	MSTNG MUO 12	SENPE MUO 5	RATLR MUO 12	MSTNG MUO 12	BRNCO MUO 22
↑	MUO R-309	MUO 6	MUO TACAN	MUO 12	MUO 12	MUO 22
	JERLU MUO 1.1	MUO 27				
			4100	5000	6100	10,000
			3.9 NM	Arc	2.55°	TCH 40
CATEGORY	C		D		E	
S-30 *	3480/50		484 (500-1)			
CIRCLING **	3560-1 1/2 564 (600-1 1/2)		3560-2 564 (600-2)		3700-2 1/2 704 (800-2 1/2)	



HI-TACAN Y RWY 30

NW-1, 08 AUG 2024 to 05 SEP 2024

NW-1, 08 AUG 2024 to 05 SEP 2024