

MOUNTAIN HOME, IDAHO

TACAN Z RWY 12

MOUNTAIN HOME AFB (KMUO)

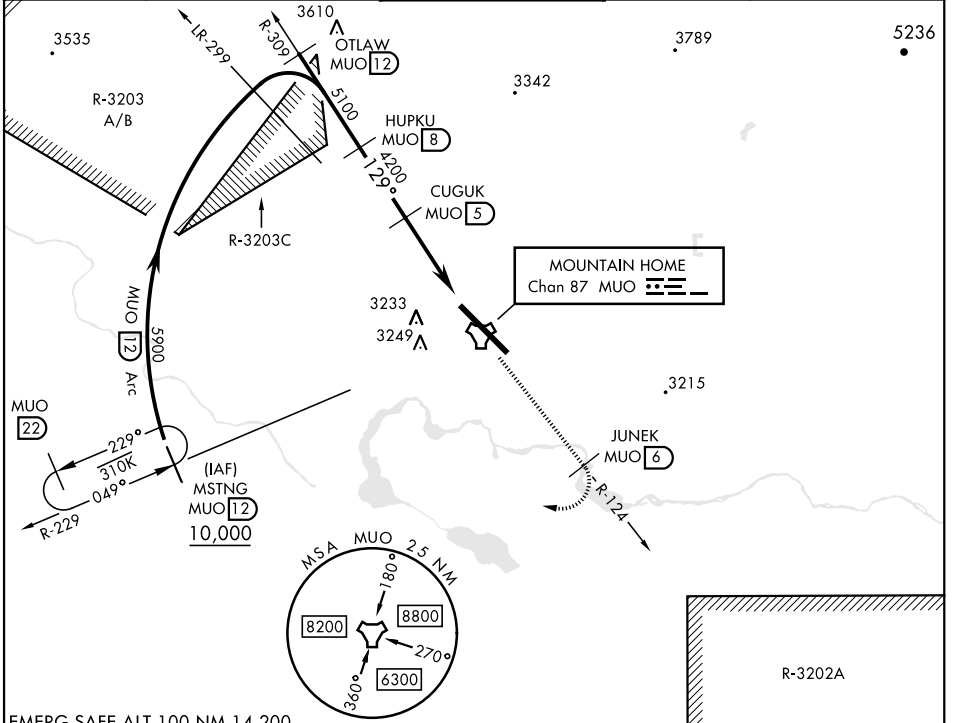
TACAN MUO Chan 87	APCH CRS 129°	Rwy Idg 13,510 TDZE 2987 Arprt Elev 2996
--------------------------	----------------------	---

[USAF]

▼ * When ALS inop, increase CAT AB RVR to 55 and vis to 1 mile, CAT CDE vis to 1½ miles.
 ** Circling NA NE of Rwy 12-30.

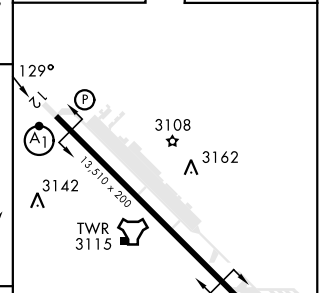
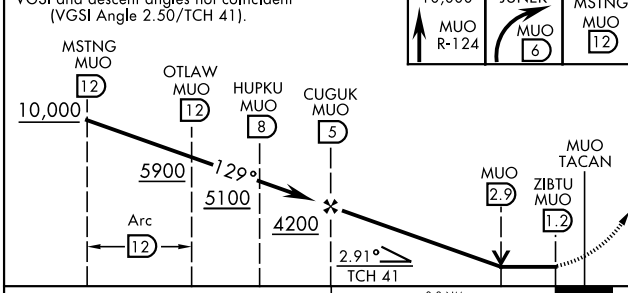
ALSF-1  MISSED APPROACH: Climb to 10,000 via MUO R-124 to JUNEK/6 DME, turn right and intercept MUO R-229 to MSTNG/12 DME and hold. Continue climb in hold to 10,000.

ATIS 273.5	MOUNTAIN HOME APP CON 124.8 259.1	MOUNTAIN HOME TOWER 133.85 253.5	GND CON 120.5 275.8	CLNC DEL 127.1 290.425
-------------------	--	---	----------------------------	-------------------------------



EMERG SAFE ALT 100 NM 14,200

VGSI and descent angles not coincident (VGSI Angle 2.50/TCH 41).	10,000 MUO R-124	JUNEK MUO 6	MSTNG MUO 12	ELEV 2996	TDZE 2987
--	------------------	-------------	--------------	-----------	-----------



CATEGORY	A	B	C	D	E
S-12 *	3480/40	493 (500-¾)	3480/50	493 (500-1)	
CIRCLING **	3520-1 524 (600-1)	3560-1 564 (600-1)	3560-1½ 564 (600-1½)	3560-2 564 (600-2)	3700-2½ 704 (800-2½)

HIRL Rwy 12-30

MOUNTAIN HOME, IDAHO 43°03'N-115°52'W MOUNTAIN HOME AFB (KMUO)

Amtd 3 18JUN20

TACAN Z RWY 12

NW-1, 08 AUG 2024 to 05 SEP 2024

NW-1, 08 AUG 2024 to 05 SEP 2024