

LOC/DME I-JMJ 110.5 Chan 42	APP CRS 283°	Rwy ldg 11000 TDZE 23 Apt Elev 31
--	------------------------	--

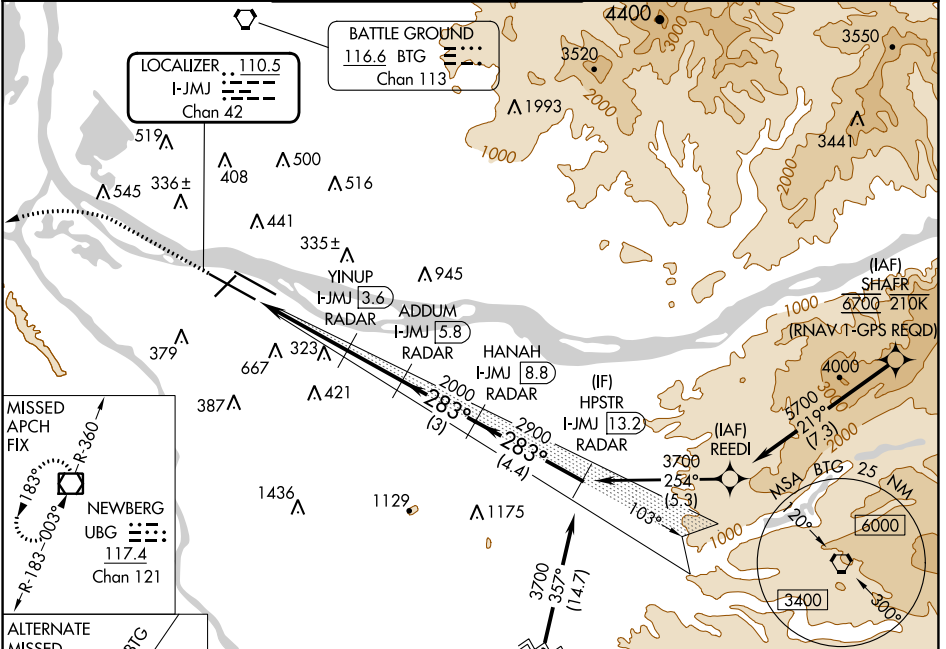
ILS or LOC RWY 28L

PORTLAND INTL (PDX)

Simultaneous approach authorized. Autopilot coupled approach NA below 880. DME or RADAR required. For inop ALS, increase S-ILS 28L Cat E visibility to RVR 4500 and increase S-LOC 28L Cat E visibility to 1 1/2 SM.

MALSR MISSED APPROACH: Climb to 2100 then climbing left turn to 4000 on UBG R-360 to UBG VOR/DME and hold.

D-ATIS 128.35 269.9	PORTLAND APP CON 124.35 299.2	PORTLAND TOWER Rwys 10L-28R 118.7 257.8 Rwys 3-21, 10R-28L 123.775 251.125	GND CON 121.9 348.6	CLNC DEL 120.125 318.1	CPDLC
---	---	--	-------------------------------	----------------------------------	-------



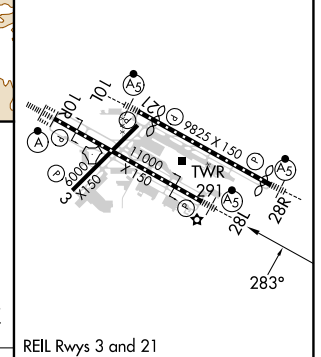
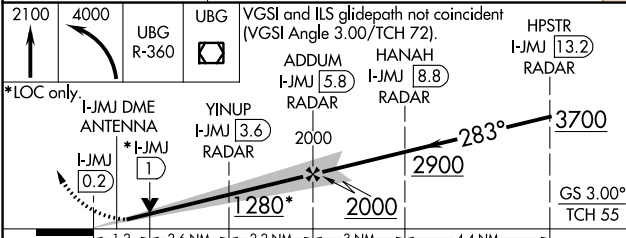
NW-1, 08 AUG 2024 to 05 SEP 2024

NW-1, 08 AUG 2024 to 05 SEP 2024

Procedure NA for arrivals at MAVER on V448 southbound and on V165 eastbound.

MAVER (RNAV 1 - GPS REQD)

ELEV 31	TDZE 23
---------	---------



CATEGORY	A	B	C	D	E
S-ILS 28L	306/24 283 (300-1/2)				
S-LOC 28L	480/24	457 (500-1/2)	480/45		457 (500-7/8)
CIRCLING	720-1 689 (700-1)	760-1 729 (800-1)	1060-3	1029 (1100-3)	1140-3 1109 (1200-3)
	FAF to MAP 6 NM				
	Knots 60	90	120	150	180
	Min:Sec 6:00	4:00	3:00	2:24	2:00