


APP CRS	Rwy Idg	9290
283°	TDZE	31
	Apt Elev	31

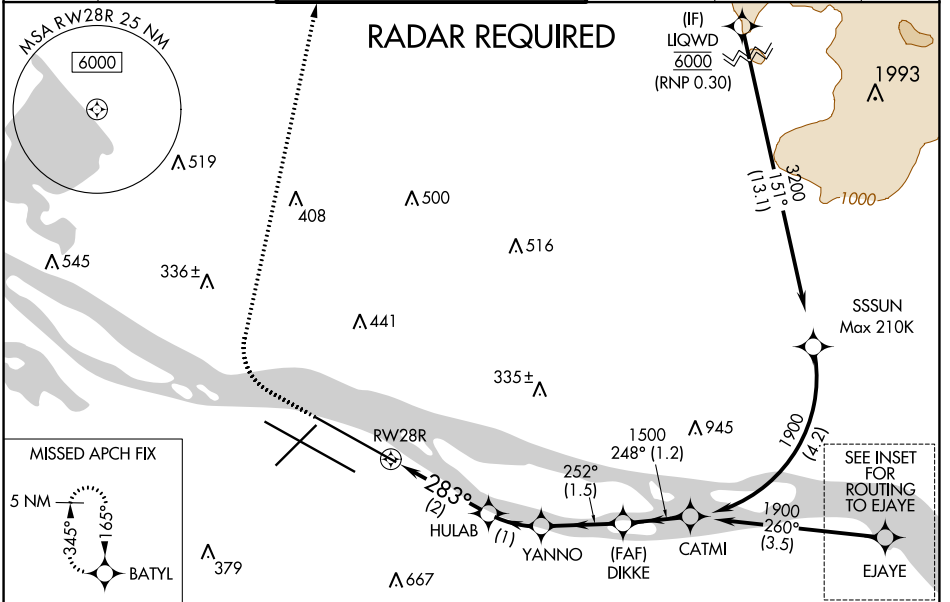
RNAV (RNP) Y RWY 28R

PORTLAND INTL (PDX)

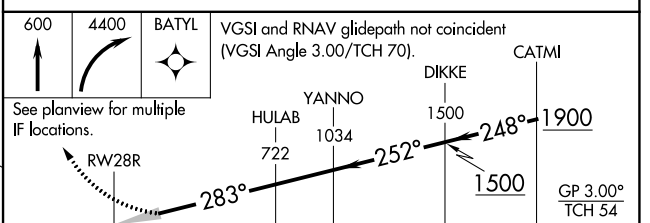
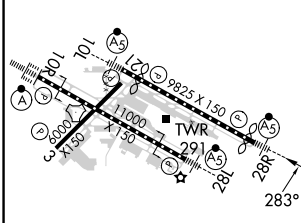
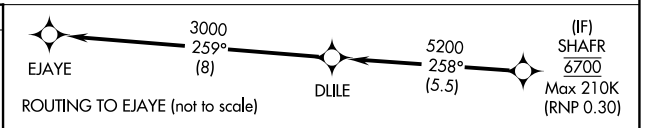
For uncompensated Baro-VNAV systems, procedure NA below -7°C (20°F) or above 54°C (130°F). For inop MALS, increase RNP 0.20 all Cats visibility to 1 1/4 mile, and increase RNP 0.30 all Cats visibility to 1 3/8 mile. RF required. GPS required. Use of FD or AP providing RNAV track guidance required during simultaneous operations. Simultaneous approach authorized with Rwy 28L.

MALS
 MISSED APPROACH: Climb to 600 then climbing right turn to 4400 direct BATYL and hold, continue climb-in-hold to 4400.

D-ATIS 128.35 269.9	PORTLAND APP CON 124.35 299.2	PORTLAND TOWER Rwy 10L-28R 118.7 257.8	Rwys 3-21, 10R-28L 123.775 251.125	GND CON 121.9 348.6	CLNC DEL 120.125 318.1	CPDLC
---	---	---	--	-------------------------------	----------------------------------	-------



ELEV	31	D	TDZE	31
------	-----------	----------	------	-----------



CATEGORY	A	B	C	D
RNP 0.20 DA		403/40	372 (400-3/4)	
RNP 0.30 DA		455/50	424 (500-1)	

REIL Rwys 3 and 21
 TDZ/CL Rwy 10R
 MIRL Rwy 3-21
 HIRL Rwys 10L-28R and 10R-28L

AUTHORIZATION REQUIRED

NW-1, 08 AUG 2024 to 05 SEP 2024

NW-1, 08 AUG 2024 to 05 SEP 2024