

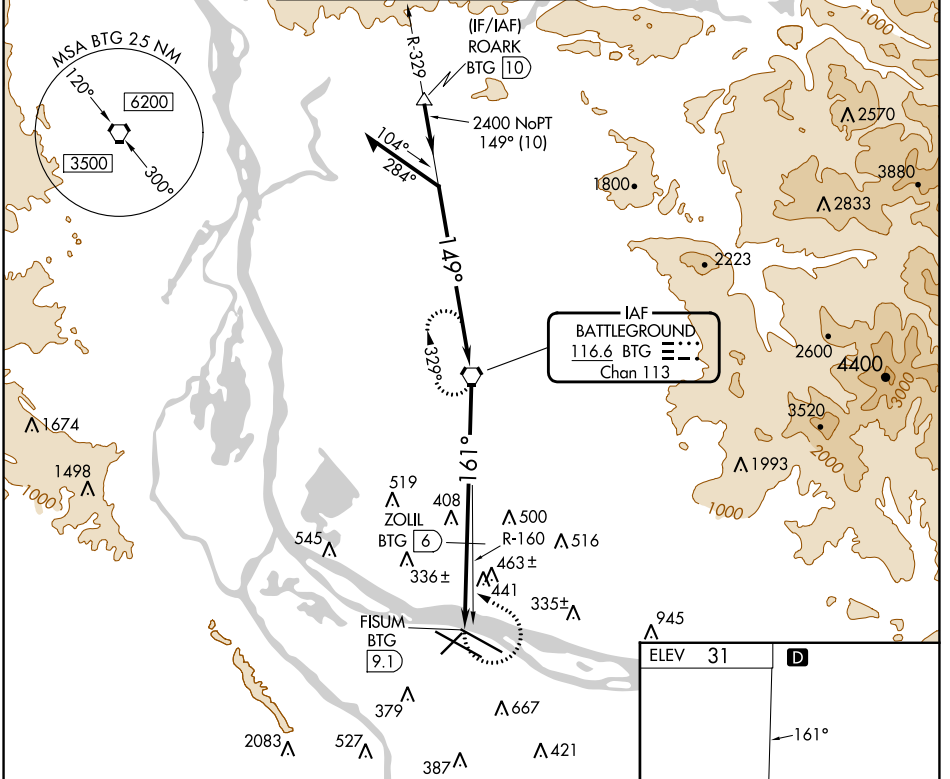
VORTAC BTG <b>116.6</b> Chan <b>113</b>	APP CRS <b>161°</b>	Rwy Idg TDZE Apt Elev	<b>N/A</b> <b>N/A</b> <b>31</b>
---	------------------------	--------------------------	---------------------------------------

# VOR-A

PORTLAND INTL (PDX)

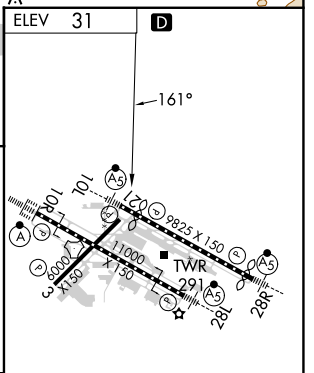
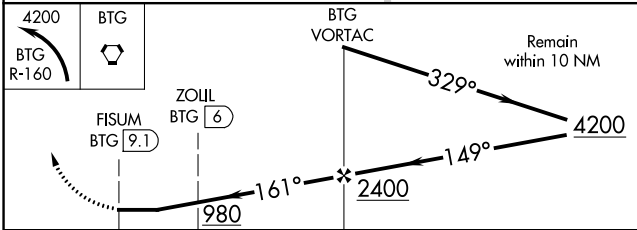
**MISSSED APPROACH:** Climbing left turn to 4200 via BTG R-160 to BTG VORTAC and hold, continue climb-in-hold to 4200.

D-ATIS <b>128.35</b> <b>269.9</b>	PORTLAND APP CON <b>124.35 299.2</b>	PORTLAND TOWER Rwys 10L-28R <b>118.7 257.8</b>	Rwys 3-21, 10R-28L <b>123.775 251.125</b>	GND CON <b>121.9 348.6</b>	CLNC DEL <b>120.125 318.1</b>	CPDLC
---	---	--	--	-------------------------------	----------------------------------	-------



NW-1, 08 AUG 2024 to 05 SEP 2024

NW-1, 08 AUG 2024 to 05 SEP 2024



CATEGORY	A	B	C	D
<b>CIRCLING</b>	980-1¼ 689 (700-1)	949 (1000-1¼) 729 (800-1)	1060-3	1029 (1100-3)
ZOLIL FIX MINIMUMS				
<b>CIRCLING</b>	720-1 689 (700-1)	760-1 729 (800-1)	1060-3	1029 (1100-3)

REIL Rwys 3 and 21					
TDZ/CL Rwy 10R					
MIRL Rwy 3-21					
HIRL Rwys 10L-28R and 10R-28L					
FAF to MAP 9.1 NM					
Knots	60	90	120	150	180
Min:Sec	9:06	6:04	4:33	3:38	3:02