

LOC/DME I-PVD <b>109.3</b> Chan 30	APP CRS <b>047°</b>	Rwy Idg <b>8700</b> TDZE <b>53</b> Apt Elev <b>54</b>
--	------------------------	---

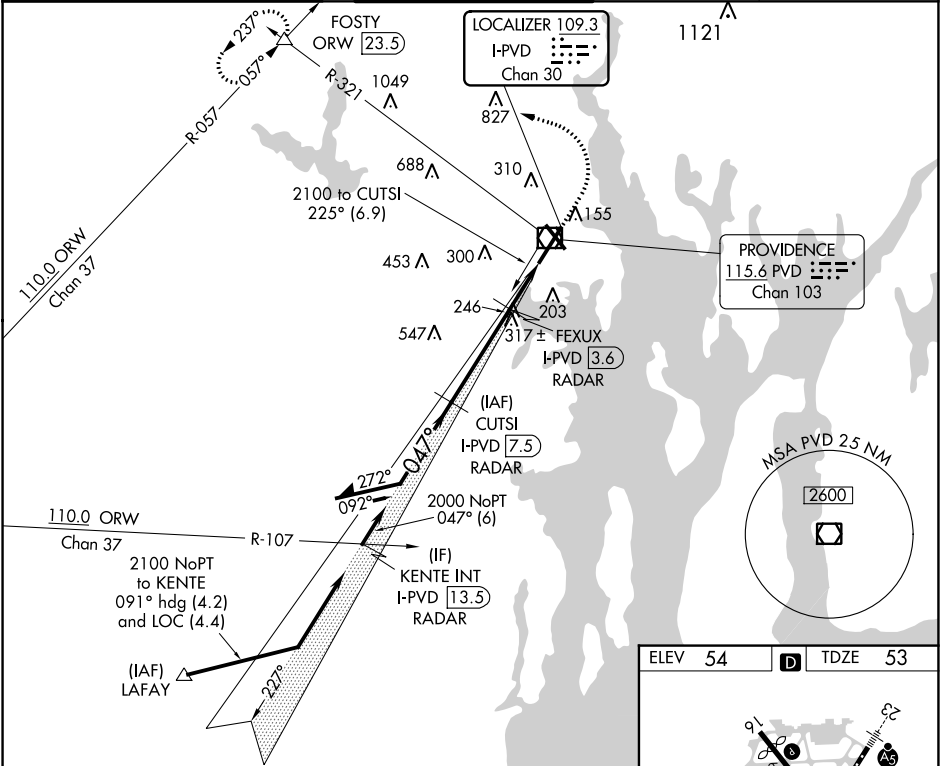
# ILS or LOC RWY 5

RHODE ISLAND TF GREEN INTL (PVD)

▼ When tower closed: increase S-ILS 5 all Cats and S-LOC 5 Cats A and B visibilities to ¾ SM, and S-LOC 5 Cats C and D visibility to 1 SM.  
 ▲ When control tower closed, for inop ALS, increase S-LOC 5 Cats C and D visibility to 1½ SM. RADAR or DME required for localizer minimums.

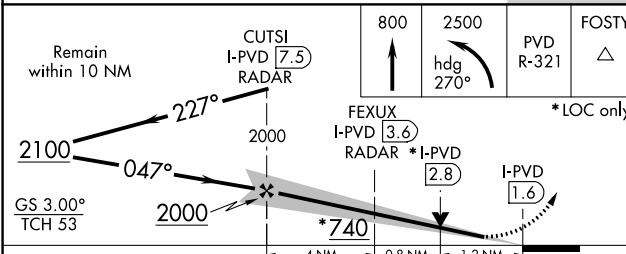
ALS-2 MISSED APPROACH: Climb to 800 then climbing left turn to 2500 on heading 270° and PVD VOR/DME R-321 to FOSTY INT/ORW 23.5 DME and hold.

D-ATIS <b>124.2</b>	PROVIDENCE APP CON * <b>123.675 244.875</b>	PROVIDENCE TOWER * <b>120.7 (CTAF) 0 257.8</b>	GND CON <b>121.9 348.6</b>	CLNC DEL <b>126.65 348.6</b>
------------------------	--	---	-------------------------------	---------------------------------



NE-1, 08 AUG 2024 to 05 SEP 2024

NE-1, 08 AUG 2024 to 05 SEP 2024



ELEV 54	D	TDZE 53
---------	---	---------

**TDZ/CL Rwy 5** 1  
**REIL Rwy 16** 1  
**HIRL Rwys 5-23 and 16-34** 1

FAF to MAP 6 NM

Knots	60	90	120	150	180
Min:Sec	6:00	4:00	3:00	2:24	2:00