


HI-ILS or LOC Z RWY 33R

LOC I-RND 109.3	APCH CRS 325°	Rwy ldg TDZE Arprt Elev 8351 733 761	[USAF]	RANDOLPH AFB (KRND)
---------------------------	-------------------------	--	--------	---------------------

RADAR or DME required

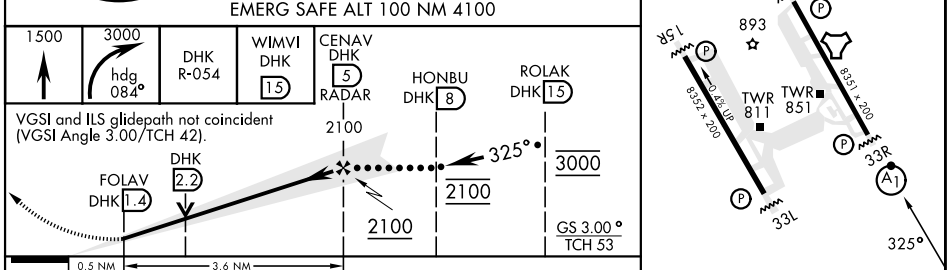
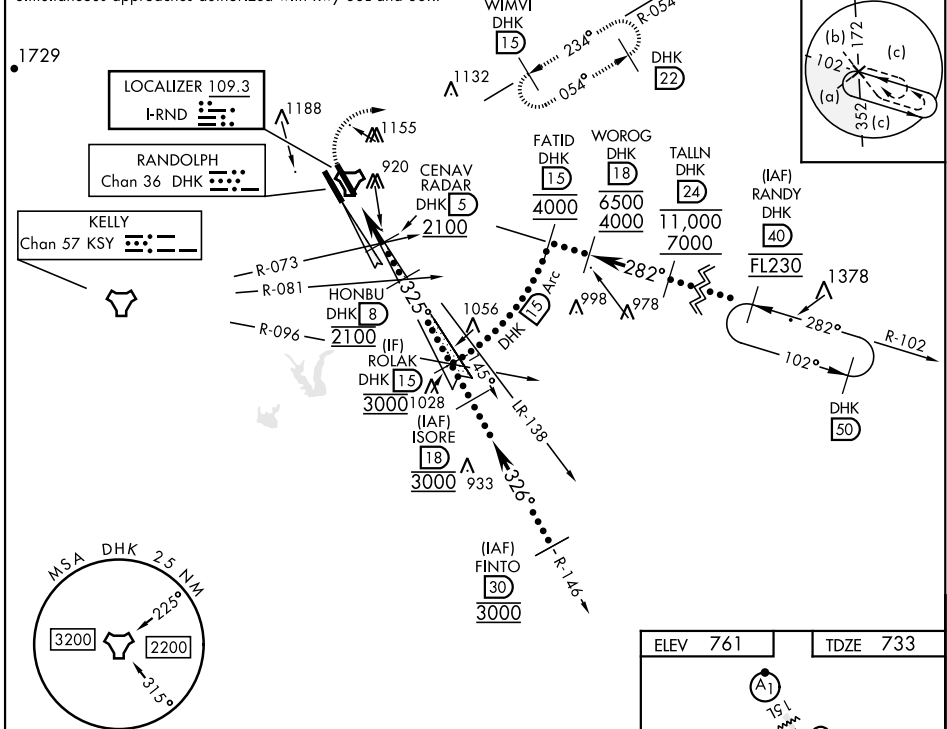
* When ALS inop, increase RVR to 40, vis to 3/4 mile.
 ** When ALS inop, increase vis to 1 1/8 miles.
 *** Circling not authorized SW of Rwy 15L-33R.

ALSF-1


MISSED APPROACH: Climb to 1500, then climbing right turn heading 084° to 3000, intercept DHK R-054 to WIMVI and hold.

ATIS ★ 290.525	SAN ANTONIO APP CON 128.05 318.1	TOWER ★ 128.25 294.7	GND CON 119.65 275.8	CLNC DEL (RWY 15L-33R) 338.35	HANGOVER ATIS ★ 327.8	HANGOVER TOWER ★ 120.5 291.1	HANGOVER GND CON 124.75 353.75
--------------------------	--	--------------------------------	--------------------------------	---	---------------------------------	--	--

Simultaneous approaches authorized with Rwy 33L and 33R.



ELEV 761	TDZE 733						
EMERG SAFE ALT 100 NM 4100							
1500	3000	hdg 084°	DHK R-054	WIMVI DHK (15)	CENAV DHK (5) RADAR	HONBU DHK (8)	ROLAK DHK (15)
VGS I and ILS glidepath not coincident (VGS Angle 3.00/TCH 42).		2100		2100		3000	
0.5 NM		3.6 NM		2100		GS 3.00° TCH 53	
CATEGORY	C	D	E				
S-ILS 33R*	933/24	200	(200-1/2)				
S-LOC 33R**	1180/45	447	(500-7/8)				
CIRCLING***	1260-1 1/2 499 (500-1 1/2)	1800-3	1039 (1100-3)				
HIRL all rwys		ALS Rwy 15L nstd len 2100'					
		FAF to MAP 3.6 NM					
Knots	120	140	160	180	200		
Min:Sec	1:48	1:33	1:21	1:12	1:05		

HI-ILS or LOC Z RWY 33R

SC-3, 08 AUG 2024 TO 05 SEP 2024

SC-3, 08 AUG 2024 TO 05 SEP 2024