

HI-TACAN A

TACAN DHK Chan 36	APCH CRS 144°	Rwy ldg TDZE Arprt Elev N/A N/A 761
-----------------------------	-------------------------	---

[USAF]

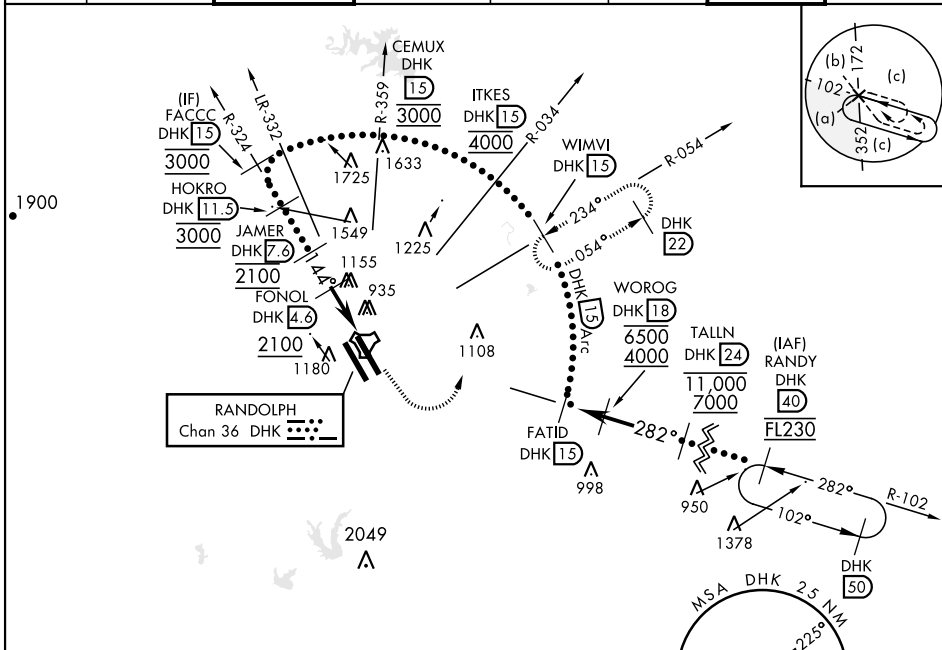
RANDOLPH AFB (KRND)

RADAR required for missed approach monitoring

MISSED APPROACH: Track heading 145° to 1500. Then climbing left turn heading 024° to 3000. Intercept DHK TACAN R-054 to WIMVI and hold.

* Circling not authorized SW of Rwy 15L-33R.

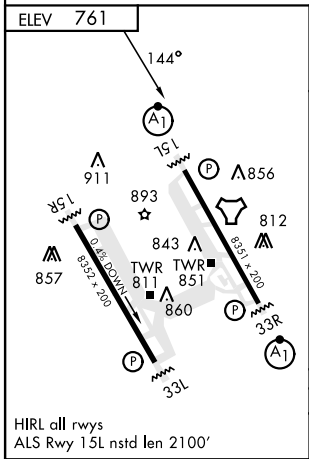
ATIS★ 290.525	SAN ANTONIO APP CON 128.05 318.1	TOWER★ 128.25 294.7	GND CON 119.65 275.8	CLNC DEL (RWY 15L-33R) 338.35	HANGOVER ATIS★ 327.8	HANGOVER TOWER★ 120.5 291.1	HANGOVER GND CON 124.75 353.75
-------------------------	---	-------------------------------	--------------------------------	--	-----------------------------------	--	---



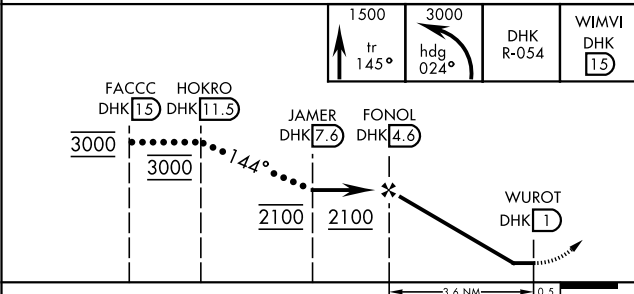
SC-3, 08 AUG 2024 to 05 SEP 2024

SC-3, 08 AUG 2024 to 05 SEP 2024

EMERG SAFE ALT 100 NM 4100



HIRL all rwys
ALS Rwy 15L nstd len 2100'



CATEGORY	C	D	E
CIRCLING*	1320-1½ 559 (600-1½)	1800-3	1039 (1100-3)

HI-TACAN A